

PLASKOLITE

PRODUCT LINE GUIDE



CORE BRANDS

TUFFAK[®]
POLYCARBONATE SHEET

OPTIX[®]
ACRYLIC SHEET

VIVAK[®]
PETG SHEET

POLYGAL[®]
MULTIWALL

Lucite[®] SPA

FABBACK[®]
MIRRORED SHEET

PLASKOLITE

QUALITY COMMITMENT

PLASKOLITE is a leading manufacturer of extruded acrylic sheet, continuous cast acrylic sheet, polycarbonate sheet, PETG sheet, multiwall sheet, acrylic resin, and plastic mirror sheet. Since 1950, we have built an excellent reputation for providing high quality products and responsive customer service.

PLASKOLITE'S commitment to quality extends over every aspect of its business. With a manufacturing footprint of over 1 million square feet and growing, PLASKOLITE delivers the highest quality sheet and resin to customers worldwide, under rigorous ISO 9001 quality standards.

To better serve our customers, sheets can be ordered in customized "Run-to-Size" dimensions and special patterns and thicknesses. Customer Service Representatives use automated order and shipping tracking systems to provide customers with up-to-the-minute information on their orders.

From manufacturing through customized product offerings, packing, shipping and order tracking, PLASKOLITE is committed to delivering the highest quality products and service to its customers.

CONTENTS

OPTIX® EXTRUDED ACRYLICS

TYPICAL PROPERTIES.....	4
OPTIX.....	5
PACKAGING INFORMATION by GAUGE.....	6-7
COLORED ACRYLIC SHEET.....	8-9
RUN-to-SIZE PROGRAM.....	10
DURAPLEX.....	11
SIGN GRADE ROLL STOCK.....	12-13
OPTIX DA / E-DA.....	14
OPTIX LD.....	15
OPTIX FROST / 95.....	16
OPTIX NG / 99.....	17
OPTIX PATTERNED.....	18
OPTIX FG / FRAME GRADE UVF.....	19
OPTIX SR.....	20
OPTIX AMGARD®.....	21
FABBACK MIRROR.....	22
FABBACK COLORED MIRROR.....	23
FABBACK ACRYLIC MIRROR.....	24-25
LIGHTING PANELS.....	26
PATTERNED LIGHTING.....	27
PXT LED DIFFUSION.....	28
VIVAK® PETG THERMOPLASTIC.....	29
ABS THERMOPLASTIC.....	30

TUFFAK® POLYCARBONATES

TYPICAL PROPERTIES.....	31
RUN-to-SIZE PROGRAM.....	32
TUFFAK GP.....	33
TUFFAK GP-V.....	34
TUFFAK GP TEXTURED.....	35
TUFFAK GP-V TEXTURED.....	36
TUFFAK GP PRISMATIC.....	37
TUFFAK OP.....	38
TUFFAK OP-V.....	39
TUFFAK FD.....	40
TUFFAK FI.....	41
TUFFAK LF.....	42
TUFFAK SL.....	43
TUFFAK SL MATTE.....	44
TUFFAK SK.....	45
TUFFAK LD.....	46
TUFFAK UV.....	47
TUFFAK AR.....	48
TUFFAK AR-V.....	49
TUFFAK FC.....	50
TUFFAK 15.....	51

TUFFAK POLYCARBONATES cont.

HYGARD® LAMINATE CG375.....	52
HYGARD LAMINATE CG500.....	53
HYGARD LAMINATE CG750.....	53
HYGARD LAMINATE BR750.....	54
HYGARD LAMINATE BR1000.....	54
HYGARD LAMINATE BR1250.....	55
HYGARD LAMINATE MS1250.....	55
AMGARD.....	56
AMGARD SR.....	57
TUFFAK MIRROR.....	58
LUMEN XT / XT-V.....	59
TUFFAK DX-NR.....	60
TUFFAK NR / NR-C.....	61
TUFFAK WG.....	62
TUFFAK MG.....	63
TUFFAK UC.....	64
TUFFAK AU.....	65
TUFFAK BG.....	66
TUFFAK TG.....	67
TUFFAK DG.....	68
TUFFAK HV.....	69
TUFFAK TX.....	70
TUFFAK AL.....	71
TUFFAK SQ.....	72
TUFFAK AF.....	72
TUFFAK IR.....	73
TUFFAK M5.....	74
TUFFAK VR.....	75
TUFFAK WC.....	76
TUFFAK LS.....	77
TUFFAK CA.....	78
TUFFAK CA-UV.....	79
TUFFAK CA-AR.....	80

OPTIX L CONTINUOUS CAST ACRYLICS

OPTIX L CLEAR.....	81
OPTIX L COLORS.....	82
OPTIX L B/W.....	83
OPTIX L MYST.....	84
OPTIX L FRAME GRADE.....	85
OPTIX L MUSEUM GRADE.....	86
OPTIX L EDGE-LIT.....	87
OPTIX L ECOSHADE.....	88
OPTIX L UTRAN.....	89
OPTIX L BLOCK.....	90
OPTIX L FROST.....	91



Acrylic Sheet Properties

OPTIX EXTRUDED ACRYLIC SHEET

OPTIX extruded acrylic is a lightweight, crystal clear, weather-resistant sheet ideal for many fabrication or glazing applications. The exceptional clarity and weatherability of OPTIX acrylic sheet makes it the perfect choice for applications with high optical and light transmitting requirements. It is impact resistant,

and does not shatter into sharp-edged pieces, which makes it a good alternative to glass. OPTIX is available in a wide range of gauges, textures, colors and sizes.

APPLICATIONS INCLUDE:

Point-of-purchase displays, lighting, signage, picture framing, glazing, transportation

Typical Properties

Property	Test Method	Units	Values
PHYSICAL			
Specific Gravity / Relative Density	ASTM D792	-	1.19
Optical Refractive Index	ASTM D542	-	1.49
Light Transmission - Total	ASTM D1003	%	92
Light Transmission - Haze	ASTM D1003	%	<2
Sound Transmission	ASTM E90 / E413	dB	27
Water Absorption	ASTM D570	%	0.4
Mold Shrinkage	ASTM D955	mils/in	2-6
MECHANICAL			
Tensile Strength	ASTM D638	psi	11,030
Tensile Elongation - Max.	ASTM D638	psi	5.8
Tensile Modulus of Elasticity	ASTM D638	psi	490,000
Flexural Strength	ASTM D790	psi	17,000
Izod Impact Strength - Notched	ASTM D256	ft-lb./in	0.4
Tensile Impact Strength	ASTM D1822	ft-lb./in ²	20
Abrasive Resistance - Change in Haze			
10 cycles	ASTM D1044	Haze %	11.2
50 cycles	ASTM D1044	Haze %	24
200 cycles	ASTM D1044	Haze %	24.9
Rockwell Hardness	ASTM D785	-	M-95
THERMAL			
Maximum Recommended			
Continuous Service Temperature	-	°F	170-190
Softening Temperature	ASTM D1525	°F	210-220
Deflection Temperature @ 264 psi (1.8 MPa)	ASTM D648	°F	203
Deflection Temperature @ 66 psi (0.45 MPa)	ASTM D648	°F	207
Coefficient of Linear Thermal Expansion	ASTM D696	in/in/°F	3.0 x 10 ⁻⁵
Thermal Conductivity	ASTM C177	Btu-ft/ft ² /hr/°F	0.075
Flammability (Burning Rate)	ASTM D635	in/min	1.0
Flammability	UL 94	-	HB
Smoke Density Rating	ASTM D2843	%	3.4
Self-Ignition Temperature	ASTM D1929	°F	833
Flame Spread Index	ASTM E84	-	115
Smoke Developed Index	ASTM E84	-	550



General Purpose

GENERAL-PURPOSE ACRYLIC SHEET

OPTIX general-purpose acrylic sheets have the superior optical properties necessary for applications requiring high clarity, such as high-end lighting systems, and picture framing. They are easy to fabricate and form, with exceptional UV stability, for many interior and exterior applications.

Our OPTIX general-purpose acrylic sheets include transparent, translucent, patterned and frosted appearance, and are available in a broad range of gauges and sheet sizes.

APPLICATIONS INCLUDE:

Signage, lighting fixtures, retail display



Please refer to pages 6 and 7 for product stock numbers and packaging information.

Sheet Thickness

OPTIX general-purpose acrylic sheet is produced within industry standards of $\pm 10\%$ on thickness. Minimum thicknesses available. Call for quotation and production minimums.

Sheet Tolerances (on line)

OPTIX general-purpose acrylic sheet is produced to tolerances of $\pm 1/16$ " length and width on sizes 42" and smaller. Sheet sizes greater than 42" up to 60" are produced to length and width tolerances of $\pm 3/32$ ". All sheet sizes greater than 60" produced to length and width tolerances of $\pm 1/8$ " (-0, +1/4 on 48" x 96" stock sizes and above).

Sheet Squareness (on line)

OPTIX general-purpose acrylic sheet is produced to squareness tolerances of $\pm 1/8$ " on sizes 42" and smaller. Sheet sizes greater than 42" to 60" squareness is $\pm 3/16$ " and sheet sizes greater than 60" squareness is $\pm 1/4$ ".

Sheet Edges

Edges are supplied slit, hot sheared and saw cut.

Sheet Masking

Most general-purpose acrylic is stocked with a 2 mil Co-Ex masking, on two sides. A variety of sheet masking options and configurations are available including papermasking, TG paper replacement film, and 3 mil formable film.

Run-to-Size Sheet

Run-to-Size Solutions offered by PLASKOLITE delivers ultimate flexibility by allowing the purchase of OPTIX general-purpose and other popular substrates made to individual specifications.

Custom sizes, thicknesses, colors, masking and packaging options available. See page 10 for more details on Run-to-Size from PLASKOLITE.

PLASKOLITE'S acrylic sheets are covered under the following:

- » International Code Council Evaluation Service (ICC-ES) listings (incorporates former ICBO, SBCCI, BOCA and NES certifications) as Plastics
- » ANSI Z97.1 Safety Glazing Requirements
- » ANSI Z26.1 Motor Vehicle Safety Glazing Standard
- » Underwriters Laboratories (UL) listings UL 94HB
- » Miami-Dade County Product Control Notice of Acceptance - Clear Plastics
- » 10-year limited warranty on all clear acrylic sheets
- » ASTM D-4802 - B-1 Plastics

EXTRUDED ACRYLIC

0.060" (1.5mm)

Item #	Size	Sq. Ft.	Pack Qty.	Skid Qty.
1AG000QA	48" x 96" Polyfilm	32.00	5	
1AG000TA	48" x 96" Polyfilm	32.00	Bulk	180
1AG000UA	48" x 96" Papermask	32.00	5	
1A0000WA	48" x 96" Papermask	32.00	Bulk	180
1AGL340A	49" x 97" Polyfilm	33.00	Bulk	125

0.080" (2.0mm)

Item #	Size	Sq.Ft.	Pack Qty.	Skid Qty.
11G0810A	8" x 10"	.55	15	
11G0670A	18" x 24"	3.00	10	
11G0075A	24" x 48"	8.00	10	
11G0830A	28" x 30"	5.83	12	
11G0184A	30" x 32"	6.66	10	
11G0188A	30" x 36"	7.50	10	
1AG0500A	30" x 60"	12.50	5	
11G0231A	32" x 44"	9.78	10	
1AG0575A	36" x 72"	18.00	5	
1AG0595A	48" x 96"	32.00	5	
1AG0389A	48" x 96" Polyfilm	32.00	Bulk	130
1AG1684A	49" x 97" Polyfilm	33.00	Bulk	100

0.093" (2.3mm)

Item #	Size	Sq. Ft.	Pack Qty.	Skid Qty.
1AU0515A	11" x 14"	1.07	10	
1AU0187A	18" x 24"	3.00	10	
1AU0202A	20" x 32"	4.44	10	
1AU0228A	24" x 28"	4.67	10	
1AU0238A	24" x 30"	5.00	10	
1AU0222A	24" x 36"	6.00	10	
1AU0262A	24" x 48"	8.00	10	
1AU0252A	26" x 28"	5.06	10	
1AU0254A	28" x 30"	5.83	10	
1AU0264A	28" x 32"	6.22	10	
1AU0314A	30" x 32"	6.66	10	
1AU0364A	30" x 36"	7.50	10	
1AU0395A	30" x 60"	12.50	5	
1AU0394A	30" x 60"	12.50	10	
1AU0434A	32" x 32"	7.11	10	
1AU0464A	32" x 40"	8.89	10	
1AU0474A	32" x 44"	9.78	10	
1AU0564A	36" x 36"	9.00	10	
1AU0593A	36" x 48"	12.00	10	
1AU0611A	36" x 60"	15.00	10	
1AU0660A	36" x 72"	18.00	5	
1AU0664A	36" x 72"	18.00	10	
1AU0803A	48" x 96"	32.00	5	
1AU0800A	48" x 96" 2 mil Polyfilm	32.00	Bulk	112
1AU0799A	48" x 96" Papermask	32.00	Bulk	112
1AU0913A	60" x 96" Polyfilm	40.00	5	
1AU0911A	60" x 96" 2 mil Polyfilm	40.00	Bulk	90

0.100" (2.5mm)

Item #	Size	Sq. Ft.	Pack Qty.	Skid Qty.
11G0606A	16" x 20"	2.22	10	
1AG0918A	18" x 24"	3.00	5	
11G0018A	18" x 24"	3.00	10	
1AG0930A	20" x 32"	4.44	5	
11G0630A	20" x 32"	4.44	10	
1AG0959A	24" x 28"	4.67	5	
11G0659A	24" x 28"	4.67	10	
1AG0961A	24" x 30"	5.00	5	
11G0661A	24" x 30"	5.00	10	
1AG0970A	24" x 36"	6.00	5	
1AG0975A	24" x 48"	8.00	5	
11G0675A	24" x 48"	8.00	10	
1AG0995A	26" x 28"	5.06	5	
11G0760A	28" x 28"	5.44	10	
1AG1062A	28" x 30"	5.83	5	
11G0762A	28" x 30"	5.83	10	
1AG1063A	28" x 32"	6.22	5	
11G0763A	28" x 32"	6.22	10	
1AG1082A	30" x 30"	6.25	5	
11G0782A	30" x 30"	6.25	10	
1AG1084A	30" x 32"	6.66	5	
11G0784A	30" x 32"	6.66	10	
1AG1086A	30" x 34"	7.08	5	
1AG1088A	30" x 36"	7.50	5	
11G0788A	30" x 36"	7.50	10	
1AG1100A	30" x 60"	12.50	5	
1AG1127A	32" x 40"	8.89	5	
11G0827A	32" x 40"	8.89	10	
1AG1131A	32" x 44"	9.78	5	
11G0831A	32" x 44"	9.78	10	
1AG1160A	36" x 36"	9.00	5	
11G0860A	36" x 36"	9.00	10	
11G0862A	36" x 40"	10.00	10	
1AG1165A	36" x 48"	12.00	5	
1AG1175A	36" x 72"	18.00	5	
1AG1180A	38" x 50"	13.19	5	
1AG1190A	48" x 72"	24.00	5	
1AG1195A	48" x 96"	32.00	5	
1AG0988A	48" x 96" Polyfilm	32.00	Bulk	112

RUN-TO-SIZE AVAILABLE

Acrylic Accessories

Item #	Description	Pack Qty.
1999999A	Plastic Cutting Tool	12
1999990A	Plastic Cleaner	12

EXTRUDED ACRYLIC

0.118" (3.0mm)

Item #	Size	Sq. Ft.	Pack Qty.	Skid Qty.
1AG1549A	24" x 48"	8.00	5	
1AG1700A	30" x 60"	12.50	5	
1AG3622A	36" x 72"	18.00	4	
1AG1775A	36" x 72"	18.00	5	
1AG1496A	48" x 96"	32.00	3	
1AG1438A	48" x 96" Polyfilm	32.00	Bulk	96
1AG1447A	48" x 96" Papermask	32.00	Bulk	96
1AG3716A	48" x 96" TG Film	32.00	Bulk	96
1AG1450A	48" x 120" Papermask	40.00	Bulk	50
1AG9726A	48" x 120" Polyfilm	40.00	Bulk	50
1AG4555A	49" x 97" Polyfilm	33.00	Bulk	80
1AG1083A	51" x 100" Polyfilm	35.41	Bulk	84
1AG1085A	51" x 100" Papermask	35.41	Bulk	84
1AG4491A	60" x 96" Polyfilm	40.00	Bulk	76
1AG4465A	60" x 96" Papermask	40.00	Bulk	76
1AG2475A	60" x 96" TG Film	40.00	Bulk	76
1AG1738A	61" x 97" Polyfilm	41.06	Bulk	70
1AG1069A	60" x 120" Polyfilm	50.00	Bulk	60
1AG1317A	72" x 96" Polyfilm	48.00	Bulk	60
1AG4473A	72" x 96" Papermask	48.00	Bulk	60
1AG8256A	75" x 100" Polyfilm	62.50	Bulk	30

0.177" (4.5mm)

Item #	Size	Sq. Ft.	Pack Qty.	Skid Qty.
1AG8509A	48" x 96" Polyfilm	32.00	Bulk	60
1AG8511A	48" x 96" Papermask	32.00	Bulk	60
1AG3704A	48" x 96" TG Film	32.00	Bulk	60
1AG8516A	49" x 97" Polyfilm	33.00	Bulk	57
1AG3053A	51" x 100" Polyfilm	35.41	Bulk	57
1AG8202A	51" x 100" Papermask	35.41	Bulk	57
1AG8588A	60" x 96" Polyfilm	40.00	Bulk	48
1AG8512A	60" x 96" Papermask	40.00	Bulk	48
1AG9172A	61" x 97" Polyfilm	41.06	Bulk	45
1AG5121A	72" x 96" Polyfilm	48.00	Bulk	40
1AG8824A	72" x 96" Papermask	48.00	Bulk	40
1AG1769A	75" x 100" Polyfilm	62.50	Bulk	25

0.187" (4.7mm)

Item #	Size	Sq. Ft.	Pack Qty.	Skid Qty.
1AG8706A	48" x 96"	32.00	2	

RUN-TO-SIZE AVAILABLE

For custom and non-stock sizes, thicknesses, packaging, masking and tolerance requirements, call for availability and quotation.

0.220" (5.6mm)

Item #	Size	Sq. Ft.	Pack Qty.	Skid Qty.
1AG2123A	18" x 24"	3.00	4	
1AG2196A	24" x 48" Polyfilm	8.00	4	
1AG2124A	30" x 36" Polyfilm	7.50	4	
1AG3623A	36" x 72" Polyfilm	18.00	3	
1AG2180A	48" x 96" Polyfilm	32.00	2	
1AG9412A	48" x 96" Polyfilm	32.00	Bulk	50
1AG9400A	48" x 96" Papermask	32.00	Bulk	50
1AG3705A	48" x 96" TG Film	32.00	Bulk	50
1AG9244A	49" x 97" Polyfilm	33.00	Bulk	40
1AG7014A	48" x 120" Polyfilm	40.00	Bulk	24
1AG9795A	48" x 120" Papermask	40.00	Bulk	35
1AG9150A	51" x 100" Polyfilm	35.41	Bulk	45
1AG9038A	51" x 100" Papermask	35.41	Bulk	45
1AG9032A	60" x 96" Polyfilm	40.00	Bulk	40
1AG9110A	60" x 96" Papermask	40.00	Bulk	40
1AG2472A	60" x 96" TG Film	40.00	Bulk	40
1AG9015A	60" x 120" Polyfilm	50.00	Bulk	30
1AG9796A	72" x 96" Polyfilm	48.00	Bulk	32
1AG9103A	72" x 96" Papermask	48.00	Bulk	32
1AG3725A	72" x 96" TG Film	48.00	Bulk	32

0.236" (6.0mm)

Item #	Size	Sq. Ft.	Pack Qty.	Skid Qty.
1AG1786A	48" x 96" Polyfilm	32.00	Bulk	48
1AG1941A	48" x 96" Papermask	32.00	Bulk	48
1AG3706A	48" x 96" TG Film	32.00	Bulk	48
1AG8541A	49" x 97" Polyfilm	33.00	Bulk	40
1AG1736A	61" x 97" Polyfilm	41.06	Bulk	25
1AG9238A	75" x 100" Polyfilm	62.50	Bulk	25

0.375" (9.5mm)

Item #	Size	Sq. Ft.	Pack Qty.	Skid Qty.
1AG9848A	48" x 96" Papermask	32.00	Bulk	32
1AG5136A	49" x 97" Polyfilm	33.00	Bulk	25

0.500" (12.0mm)

Item #	Size	Sq. Ft.	Pack Qty.	Skid Qty.
1AG9900A	48" x 96" Papermask	32.00	Bulk	24
1AG3718A	48" x 96" TG Film	32.00	Bulk	24
1AG4993A	49" x 97" Polyfilm	33.00	Bulk	20

0.750" (19.0mm)

Item #	Size	Sq. Ft.	Pack Qty.	Skid Qty.
1AG7801A	48" x 96" Papermask	32.00	Bulk	16

1.00" (25.0mm)

Item #	Size	Sq. Ft.	Pack Qty.	Skid Qty.
1AG7800A	48" x 96" Papermask	32.00	Bulk	12



Colored Acrylic Flat Sheet

OPTIX COLORED ACRYLIC FLAT SHEET

OPTIX continuously processed colored acrylic sheet is offered in thicknesses of 0.060" to 1.0" and widths up to 100". This sheet is an excellent choice for skylights, displays, P.O.P., sunrooms, awnings and signage. Custom color matching available. Call for quotation on nonstock sizes, thicknesses and minimum quantities.

Colors Available:

2067 White	2514 Gray
2447 White	2515 Gray
7328 White	2538 Gray
2406 White	2370 Bronze
3015 White	2404 Bronze
2025 Black	2412 Bronze
2064 Gray	2540 Bronze
2074 Gray	2539 Bronze
2094 Gray	3030 Green Edge TemperElite

Light Transmission at 0.118"*

Color	%
Clear	92%
2412	27%
2404	49%
2370	10%
2540	75%
2064	27%
2074	13%
2094	45%
2515	75%
2538	16%
2539	60%
2067*	77%
2406*	68%
2447*	53%
7328*	32%
3015*	3%
2514	58%

* Light transmission changes with thickness.

Colored Acrylic Flat Sheet

Item #	Thickness	Description	Quantity
1X49013A	0.060"	48" x 96" 2025 Black Papermask	25/Skid
1X75209A	0.060"	48" x 96" 2447 White Polyfilm	25/Skid
1X01237A	0.060"	48" x 96" 2447 White Papermask	10/Pack
1X01238A	0.060"	48" x 96" 7328 White Papermask	10/Pack
1X48140A	0.093"	30" x 36" 2412 Bronze Polyfilm	10/Pack
1X52011A	0.118"	48" x 96" 2025 Black Polyfilm	48/Skid
1X50013A	0.118"	48" x 96" 2025 Black Papermask	5/Pack
1X04062A	0.118"	48" x 96" 2025 Black Polyfilm	5/Pack
1X03133A	0.118"	48" x 96" 2447 White Papermask	80/Skid
1X52153A	0.118"	48" x 96" 2447 White Polyfilm	48/Skid
1X04064A	0.118"	48" x 96" 2447 White Polyfilm	5/Pack
1X06899A	0.118"	48" x 96" 3015 White Polyfilm	48/Skid
1X04063A	0.118"	48" x 96" 3015 White Polyfilm	5/Pack
1X52135A	0.118"	48" x 96" 7328 White Polyfilm	80/Skid
1X03714A	0.118"	48" x 96" 7328 White Polyfilm	48/Skid
1X04065A	0.118"	48" x 96" 7328 White Polyfilm	5/Pack
1X04066A	0.118"	48" x 96" 2412 Bronze Polyfilm	5/Pack
1X04067A	0.118"	48" x 96" 2404 Bronze Polyfilm	5/Pack
1X04069A	0.118"	48" x 96" 2370 Bronze Polyfilm	5/Pack
1X04070A	0.118"	48" x 96" 2074 Smoke Polyfilm	5/Pack
1X52023A	0.118"	48" x 96" 2064 Smoke Polyfilm	48/Skid
1X04071A	0.118"	48" x 96" 2064 Smoke Polyfilm	5/Pack
1X04068A	0.118"	48" x 96" 3030 Green Polyfilm	5/Pack



Colored Acrylic Flat Sheet

Colored Acrylic Flat Sheet

Item #	Thickness	Description	Quantity
1X52232A	0.118"	49" x 97" 2025 Black Polyfilm	80/Skid
1X87468A	0.118"	49" x 97" 2447 White Polyfilm	80/Skid
1X03186A	0.118"	48" x 120" 7328 White Polyfilm	5/Skid
1X71003A	0.177"	24" x 36" 3030 Green Edge Polyfilm	6/Pack
1X52115A	0.177"	48" x 96" 2025 Black Polyfilm	28/Skid
1X04048A	0.177"	48" x 96" 2025 Black Polyfilm	3/Pack
1X03331A	0.177"	48" x 96" 2447 White Polyfilm	28/Skid
1X31488A	0.177"	49" x 97" 2025 Black Polyfilm	57/Skid
1X04050A	0.177"	48" x 96" 2447 White Polyfilm	3/Pack
1X06894A	0.177"	48" x 96" 3015 White Polyfilm	28/Skid
1X04049A	0.177"	48" x 96" 3015 White Polyfilm	3/Pack
1X27240A	0.177"	48" x 96" 7328 White Polyfilm	28/Skid
1X04047A	0.177"	48" x 96" 7328 White Polyfilm	3/Pack
1X04051A	0.177"	48" x 96" 2412 Bronze Polyfilm	3/Pack
1X04046A	0.177"	48" x 96" 2074 Smoke Polyfilm	3/Pack
1X04052A	0.177"	48" x 96" 2064 Smoke Polyfilm	3/Pack
1X35516A	0.220"	48" x 96" 2025 Black Polyfilm	24/Skid
1X04054A	0.220"	48" x 96" 2025 Black Polyfilm	2/Pack
1X35534A	0.220"	48" x 96" 2447 White Polyfilm	24/Skid
1X04056A	0.220"	48" x 96" 2447 White Polyfilm	2/Pack
1X06892A	0.220"	48" x 96" 3015 White Polyfilm	24/Skid
1X04055A	0.220"	48" x 96" 3015 White Polyfilm	2/Pack
1X35511A	0.220"	48" x 96" 7328 White Polyfilm	24/Skid
1X04057A	0.220"	48" x 96" 7328 White Polyfilm	2/Pack
1X04058A	0.220"	48" x 96" 2412 Bronze Polyfilm	2/Pack
1X04059A	0.220"	48" x 96" 2074 Smoke Polyfilm	2/Pack
1X04053A	0.220"	48" x 96" 2064 Smoke Polyfilm	2/Pack
1X31489A	0.236"	49" x 97" 2025 Black Polyfilm	45/Skid
1X60650A	0.236"	49" x 97" 2447 White Polyfilm	45/Skid
1X06120A	0.236"	49" x 97" 3015 White Polyfilm	45/Skid
1X72151A	0.236"	49" x 97" 7328 White Polyfilm	45/Skid

RUN-TO-SIZE AVAILABLE



Run-To-Size Program

OPTIX RUN-TO-SIZE PROGRAM

PLASKOLITE offers the flexibility of running OPTIX general-purpose extruded acrylic, SG sheet products, impact-modified acrylic sheet (DURAPLEX®, SG05, SG10) and FABBACK® acrylic mirror sheet, to individual specifications:

- » Allows for purchase of exact sizes, in exact quantities
- » Eliminates scrap, unused inventory and year end drops
- » Saves time, space and prolongs life of fabrication equipment

Low minimum order requirements

Quick turnaround time—the shortest in the industry

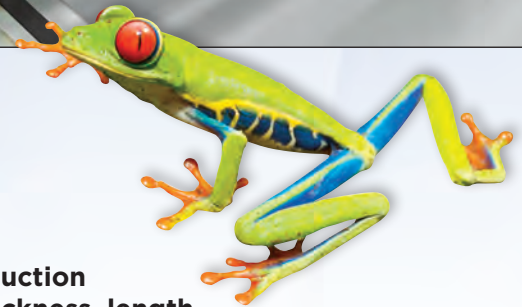
Wide range of sizes up to 105"

Thickness range from 0.040" to 1.0"

Thickness	Width	Length
0.040" *	5"	14"
0.060" **	5"	14"
0.080" **	5"	14"
0.100" **	5"	14"
0.125" **	5"	14"
0.177"	28"	20"
0.187"	28"	20"
0.220"	28"	20"
0.236"	28"	20"
0.250"	28"	20"
0.375"	28"	20"
0.500"	30"	30"
0.750" ***	30"	30"
1.00" ***	30"	30"

Non-Stock Material:

- » Special tolerances, film coverages, thicknesses and sizes available
- » Saw cut edges available
- » 3,000 lb. minimum order required for a custom thickness of clear acrylic
- » 3,000 lb. minimum required for color production run
- » 5,000 lb. minimum required for 0.500" color production run
- » 10,000 lb. minimum required for color production run over 0.500"



On line production minimum thickness, length and width requirements

- » Saw cut and slitter/hot knife edges available.
- » Sheet edges may vary, please specify preferred edge cut at the time of order.

Run-to-Size sheet minimums

- 1,000 LB. minimum per size
- * 20,000 lb. minimum required for production run
- ** 10,000 lb. minimum required for part lengths less than 14"
- *** 10,000 lb. minimum required per size change

Colors, DURAPLEX and Patterns

- » 3,000 lb. minimum required for colors
- » 20,000 lb. minimum for patterns
- » 3,000 lb. minimum required for 0.500" colors
- » 1,000 lb. minimum for required per size change

**RUN-to-SIZE IS ALSO AVAILABLE
IN TUFFAK® POLYCARBONATE SHEET -
CONTACT CUSTOMER SERVICE FOR DETAILS**



Impact-Modified

DURAPLEX IMPACT-MODIFIED ACRYLIC SHEET

DURAPLEX impact-modified acrylic sheets (also known as Sign Grade acrylic) have higher impact strengths than general-purpose acrylic sheet. They have the superior optical properties necessary for high quality sign and lighting systems. These materials are easy to fabricate and form, with exceptional UV stability, for many interior and exterior applications.

DURAPLEX is available as a custom blend for impact strength and in a wide range of gauges, sheet sizes, colors and patterns as well as sheet or roll stock.

APPLICATIONS INCLUDE:

Displays, skylights, signage, fabrication, windows, doors and any indoor/outdoor application where durability is needed



RUN-TO-SIZE AVAILABLE

DURAPLEX Properties

Property	Test Method	Units	Duraplex 40%	Duraplex 70%
PHYSICAL				
Specific Gravity	ASTM D792	-	1.18	1.16
Light Transmission - Total	ASTM D1003	%	92	90
Light Transmission - Haze	ASTM D1003	%	2	<3
Water Absorption	ASTM D570	%	0.3	0.3
Mold Shrinkage	ASTM D955	mils/in	3-6	3-6
MECHANICAL				
Tensile Strength	ASTM D638	psi	8,500	7,100
Tensile Modulus of Elasticity	ASTM D638	psi	360,000	304,000
Flexural Strength	ASTM D790	psi	12,800	10,610
Izod Impact Strength - Notch	ASTM D256	ft-lb./in	0.6	0.9
Rockwell hardness	ASTM D785	M-Scale	M-73	M-59
THERMAL				
Deflection Temperature @ 264 psi (1.8 MPa)	ASTM D648	°F	196	190
Coefficient of Thermal Expansion	ASTM D696	in/in/°F	3.75 x 10 ⁻⁵	4.5 x 10 ⁻⁵
Flammability (Burning Rate)	ASTM D635	in/min	0.85	1.53
Flammability	UL 94	-	HB	HB
Smoke Density Rating	ASTM D2843	%	7	11.5
Self-Ignition Temperature	ASTM D1929	°F	>850	>850

DURAPLEX Impact-Modified Acrylic

Item #	Thickness	Description	Sq. Ft.	Pack Quantity
1X08123A	0.080"	18" x 24" 40% I, Acrylic	3	10
1X08127A	0.080"	24" x 48" 40% I, Acrylic	8	6
1X08126A	0.080"	30" x 60" 40% I, Acrylic	12.5	5
1X08105A	0.093"	8" x 10" 40% I, Acrylic	.5	15
1X02448A	0.093"	24" x 48" 40% I, Acrylic	8	10
1X02830A	0.093"	28" x 30" 40% I, Acrylic	5.83	10
1X03244A	0.093"	32" x 44" 40% I, Acrylic	9.77	10
1X47435A	0.118"	48" x 96" 70% I, Acrylic	32	5
1X47433A	0.177"	48" x 96" 70% I, Acrylic	32	3

SIGN GRADE (SG) ROLL STOCK AND FLAT ACRYLIC SHEET

PLASKOLITE OFFERS THREE GRADES OF ACRYLIC:

SG - OPTIX® Acrylic

SG05 - DURAPLEX® Medium Impact Modified Acrylic

SG10 - DURAPLEX High Impact Modified Acrylic

Roll Stock Advantages:

- » Unlimited lengths, no seams in finished products
- » Superior forming characteristics - no predrying, detailed vacuum definition, fast cycle times
- » Better, total sheet usage - less scrap due to custom size roll widths and lengths

Custom roll widths, lengths, thicknesses and colors available. Call for quotation and delivery information.

Roll stock has clear 2 mil film with SG strip tape.

Flat sheet is supplied with a 2 mil polyfilm unless otherwise noted. Papermasking or 3 mil formable film also offered.



Widths	Colors
30" - 105"	Clear, 7328 White

Thickness	Length
0.118"	500'
0.150"	400'
0.177"	350'
0.236"	250'

SG - OPTIX Acrylic Flat Sheet - Clear and Colors Available

Item #	Thickness	Description	Skid Quantity
1X52199A	0.118"	49" x 97" 7328 White	80
1X06118A	0.118"	49" x 97" 3015 White	80
1X27260A	0.177"	48" x 96" 7328 White / Papermasked	57
1X48214A	0.177"	49" x 97" 7328 White	57
1X06119A	0.177"	49" x 97" 3015 White	57
1X03212A	0.177"	49" x 97" 2447 White	57
1X15163A	0.177"	48" x 120" 7328 White	30
1X25097A	0.177"	51" x 100" 7328 White	57
1X11287A	0.177"	60" x 120" 7328 White	25
1X75128A	0.177"	75" x 100" 7328 White	30
1X27530A	0.177"	75" x 125" 7328 White	25
1X06120A	0.236"	49" x 97" 3015 White	45
1X60650A	0.236"	49" x 97" 2447 White	45

SIGN GRADE (SG) ROLL STOCK AND FLAT ACRYLIC SHEET

SG05-DURAPLEX® Medium Impact Acrylic Flat Sheet - Clear and Colors Available

Item #	Thickness	Description	Skid Quantity
1X52208A	0.118"	51" x 100" Clear	48
1AG9811A	0.177"	51" x 100" Clear	25
1AG9812A	0.177"	75" x 100" Clear	25
1AG9813A	0.177"	75" x 125" Clear	25
1X11203A	0.177"	51" x 100" 7328 White	25
1X11202A	0.177"	75" x 100" 7328 White	25
1X11205A	0.177"	75" x 125" 7328 White	25

Orientation/Shrinkage/Reversion: SG Sheet exhibits the lowest shrinkage of any extruded acrylic sheet on the market.

Physical Property & Performance Summary

Property	ASTM	Units	SG	SG-05	SG-10
OPTICAL					
Light Transmittance	D1003	%	92	92	90
Percent Haze	D1003	%	2	2	<3
MECHANICAL					
Izod Impact Strength (73°F)	D256	ft.-lbs./in.	0.4	0.7	1.1
Izod Impact Strength (0°F)	D256	ft.-lbs./in.	0.2	0.2	0.5
Tensile Modulus of Elasticity	D638	PSI	490,000	340,000	250,000
Tensile Strength @ Yield	D638	PSI	11,030	8,000	5,600
Flexural Strength @ Yield	D790	PSI	17,000	12,000	8,300
Rockwell Hardness Method A	D785	-	95	68	46
THERMAL					
Deflection Temperature (264 psi)	D648	°F	203	194	185
Coefficient of Thermal Expansion	D696	in./in./°F)	3 x 10 ⁻⁵	4 x 10 ⁻⁵	5 x 10 ⁻⁵
PROCESSING					
Density Specific Gravity	D792	-	1.19	1.17	1.15
Moisture Water Absorption	D570	% wt. gain	0.4	0.3	0.3
Dimensional Molding Shrinkage	D955	mils./in.	2 - 6	3 - 6	3 - 6

Suggested Thermoforming Conditions

Property	Units	SG	SG-05	SG-10
Thermoforming for Sheet Thickness 0.100" to 0.375"				
Optimal Forming Temperature	°F	320	315	310
Forming Temperature Range	°F	270-350	270-350	270-350
Heating Time Two Sided Infrared	Minutes	1 - 10	1 - 10	1 - 10
Cooling Time	Minutes	0.5 - 4	0.5 - 4	0.5 - 4
Optimal Mold Temperature	°F	180	175	170
Free Shrinkage at Forming Temperature				
Machine Direction	%	1 - 3	1 - 3	1 - 3
Transfer Direction	%	0	0	0

DIGITAL ACRYLIC SHEET

OPTIX DA (Digital Acrylic) sheet is specifically designed to provide optimal adhesion of UV curing inks without adhesion promoters. OPTIX DA delivers all the benefits of continuously processed acrylic sheet in a specially formulated product for printing. It can be used in interior and exterior (outward facing non-printable side) applications.

OPTIX DA provides superior strength and is available in a variety of gauges 0.060" - 0.236" with standard and run-to-size options. Call Customer Service for details.

APPLICATIONS INCLUDE:

Signage, graphics and dry-erase boards



DA

Item #	Thickness	Description	Quantity
DA10005A	0.080"	48" x 96" Polyfilm	120
DA10001A	0.118"	48" x 96" Polyfilm	50
DA10002A	0.177"	48" x 96" Polyfilm	25
DA10003A	0.220"	48" x 96" Polyfilm	25
DA10020A	0.118"	48" x 96" 7328 White Polyfilm	25
NGDA002A	0.118"	48" x 96" Clear Non-glare, Printed Adhesive/Polyfilm	50
NGDA003A	0.177"	48" x 96" Clear Non-glare, Printed Adhesive/Polyfilm	28
NGDA004A	0.220"	48" x 96" Clear Non-glare, Printed Adhesive/Polyfilm	25

OPTIX E-DA - ERASABLE DIGITAL ACRYLIC SHEET

OPTIX E-DA (Erasable Digital Acrylic) sheet is specifically designed to provide optimal adhesion of UV curing inks without adhesion promoters. OPTIX E-DA delivers all the benefits of continuously processed acrylic sheet in a specially formulated product for printing, but with the added benefit of an abrasion- and chemical-resistant coating on one side. This product is perfect for contemporary markerboard designs and a variety of interior anti-graffiti applications.

OPTIX E-DA provides superior strength and is available in a variety of gauges 0.118" - 0.220" with standard and run-to-size options. Call Customer Service for details.

APPLICATIONS INCLUDE:

Signage, graphics and dry-erase boards

E-Series

Item #	Thickness	Description	Quantity
E301501A	0.118"	48" x 96" 3015 White, Clear Polyfilm/White Papermask	25
ECL0000A	0.118"	48" x 96" Clear, Clear Polyfilm/White Papermask	25
ECL0001A	0.220"	48" x 96" Clear, Clear Polyfilm/White Papermask	25

E-DA

Item #	Thickness	Description	Quantity
EDA0094C	0.118"	48" x 96" Clear, Clear Polyfilm/White Papermask	25
EDA0000A	0.220"	48" x 96" Clear, Clear Polyfilm/White Papermask	25

RUN-TO-SIZE AVAILABLE

LIGHT DIFFUSING ACRYLIC SHEET

OPTIX LD light diffusing acrylic sheet provides superior diffusion properties that allow for greater sign design flexibility and slim profile channel (CAN) letters. Visible hot spots and luminance fluctuations are eliminated while maintaining optimum light transmission. Available in a variety of popular sign colors, SG05 impact-modified, frost and non-glare finishes. Custom color matching available. Supplied with papermask 2-sides unless noted below.



Item #	Description	Quantity
2447 LD WHITE		
1X97003A	0.118" / 51" x 100"	48/Mini Pallet
1X97001A	0.177" / 51" x 100"	28/Mini Pallet
1X97002A	0.177" / 75" x 100"	28/Mini Pallet
1X11250A	0.177" / 51" x 100" / SG05 Polyfilm	28/Mini Pallet
1X11251A	0.177" / 75" x 100" / SG05 Polyfilm	28/Mini Pallet
7328 LD WHITE		
1X48233A	0.118" / 51" x 100"	48/Mini Pallet
1X55052A	0.118" / 51" x 100" / SG05 Polyfilm	48/Mini Pallet
2406 LD WHITE		
1X72156A	0.118" / 51" x 100" / Polyfilm	28/Mini Pallet
1X72157A	0.177" / 51" x 100" / Polyfilm	28/Mini Pallet
1X11414A	0.177" / 51" x 100" / SG05 Polyfilm	28/Mini Pallet
1X11410A	0.177" / 75" x 100" / SG05 Polyfilm	28/Mini Pallet
1X11416A	0.177" / 75" x 125" / SG05 Polyfilm	25/Mini Pallet
1X20727A	0.500" / 48" x 96" / Polyfilm	24/Mini Pallet
2114 LD BLUE		
1X95005A	0.118" / 48" x 96"	48/Mini Pallet
1X04031A	0.118" / 48" x 96"	5 Pack
1X95002A	0.177" / 48" x 96"	28/Mini Pallet
1X04025A	0.177" / 48" x 96"	3 Pack
1X95010A	0.177" / 48" x 96" / Polyfilm	28/Mini Pallet
2050 LD BLUE		
1X94003A	0.118" / 48" x 96"	48/Mini Pallet
1X94001A	0.177" / 48" x 96"	28/Mini Pallet
2157 LD RED		
1X04029A	0.118" / 48" x 96"	5 Pack
1X04030A	0.177" / 48" x 96"	3 Pack
LD NON-GLARE		
1X21591A	0.177" / 51" x 100" / 7328 LD White	28/Mini Pallet

Item #	Description	Quantity
2793 LD RED		
1X04028A	0.118" / 48" x 96"	5 Pack
1X91002A	0.177" / 48" x 96"	28/Mini Pallet
1X91003A	0.177" / 48" x 96"	7/Case
1X91000A	0.177" / 75" x 100"	28/Mini Pallet
1X20077A	0.177" / 75" x 125" / SG05	25/Mini Pallet
1X91001A	0.177" / 51" x 100"	28/Mini Pallet
1X10051A	0.177" / 72" x 96" / SG05	28/Mini Pallet
1X52618A	0.177" / 75" x 100" / SG05	28/Mini Pallet
1X91013A	0.177" / 48" x 96" / Polyfilm	28/Mini Pallet
2283 LD RED		
1X92005A	0.118" / 48" x 96"	48/Mini Pallet
1X04026A	0.118" / 48" x 96"	5 Pack
1X92002A	0.177" / 48" x 96"	28/Mini Pallet
1X04027A	0.177" / 48" x 96"	3 Pack
1X92001A	0.177" / 51" x 100"	28/Mini Pallet
1X92000A	0.177" / 75" x 100"	28/Mini Pallet
1X92012A	0.177" / 51" x 100" / SG05 Polyfilm	57/Mini Pallet
1X92013A	0.177" / 75" x 100" / SG05 Polyfilm	28/Mini Pallet
1X92024A	0.177" / 48" x 96" / Polyfilm	28/Mini Pallet
2037 LD YELLOW		
1X93005A	0.118" / 48" x 96"	48/Mini Pallet
1X04022A	0.118" / 48" x 96"	5 Pack
1X93002A	0.177" / 48" x 96"	28/Mini Pallet
1X04023A	0.177" / 48" x 96"	3 Pack
1X93001A	0.177" / 51" x 100"	28/Mini Pallet
1X93000A	0.177" / 75" x 100"	28/Mini Pallet
7235 LD GREEN		
1X91060A	0.118" / 48" x 96"	28/Mini Pallet
8197 LD YELLOW		
1X91061A	0.118" / 48" x 96"	28/Mini Pallet
2119 LD ORANGE		
1X21573A	0.177" / 51" x 100" / SG05	28/Mini Pallet
1X21572A	0.177" / 75" x 100" / SG05	28/Mini Pallet

RUN-TO-SIZE AVAILABLE

FROSTED ACRYLIC SHEET

OPTIX Frost has a frosting additive incorporated throughout the sheet, providing an elegant textured surface on both sides.

OPTIX 95 has a matte finish on one side that provides a decorative effect and reduces surface reflections.



OPTIX Frost Clear Acrylic Sheet

Item #	Thickness	Description	Quantity
1AGL539A	0.080"	24" x 48" LED Papermask	300/Bulk
1AGL533A	0.080"	51" x 100" LED Papermask	100/Bulk
1X76205A	0.118"	48" x 96" Papermask	50/Bulk
1X76247A	0.118"	48" x 96" Papermask	5/Pack
1X76204A	0.220"	48" x 96" Papermask	25/Bulk
1X76246A	0.220"	48" x 96" Papermask	2/Pack

OPTIX 95 Clear Acrylic Sheet with Matte Finish

Item #	Thickness	Description	Bulk Quantity
P951001A	0.118"	48" x 96" Printed/Plain Papermask	50
P952008A	0.118"	51" x 100" LED Printed/Plain Papermask	50
P951003A	0.220"	48" x 96" Printed/Plain Papermask	25

RUN-TO-SIZE AVAILABLE

NON-GLARE ACRYLIC SHEET

OPTIX NG continuously processed non-glare acrylic is ideal for framing applications, signage, silkscreening and point of purchase displays.

Custom thicknesses and non-stock sizes offered. Call Customer Service for quotation and delivery information.



OPTIX NG Non-Glare Heavy Matte

Item #	Thickness	Description	Quantity
1X4896UA	0.060"	48" x 96" Adhesive/polyfilm	5/Pack
1X48978A	0.060"	48" x 96" Adhesive/polyfilm	125/Bulk
1X48973P	0.060"	48" x 96" Papermask, 2 sides	5/Pack
1X48973A	0.060"	48" x 96" Papermask, 2 sides	125/Bulk
1X48947A	0.080"	48" x 96" Adhesive/polyfilm	5/Pack
1X4896PA	0.080"	48" x 96" Adhesive/polyfilm	100/Bulk
1X4896QA	0.125"	48" x 96" Adhesive/polyfilm	5/Pack
1X4896RA	0.125"	48" x 96" Adhesive/polyfilm	50/Bulk
1X48989A	0.125"	48" x 96" Papermask, 2 sides	5/Pack
1X48986A	0.125"	48" x 96" Papermask, 2 sides	50/Bulk
1X49137A	0.177"	48" x 96" Papermask, 2 sides	3/Pack
1X49135A	0.220"	48" x 96" TG Film/polyfilm	2/Pack
1X49126A	0.220"	48" x 96" Papermask, 2 sides	2/Pack

OPTIX NG Non-Glare Light Matte

Item #	Thickness	Description	Bulk Quantity
625017-1	0.080"	48" x 96" TG Film/paper replacement film	100
625203-1	0.080"	48" x 96" Papermask, 2 sides	100
625007-1	0.100"	48" x 96" Adhesive polyfilm	100
625015-1	0.118"	48" x 96" TG Film/paper replacement film	80
625303-1	0.125"	48" x 96" Papermask, 2 sides	80
625008-1	0.125"	48" x 96" Adhesive polyfilm	80
11-0060213	0.125"	60" x 96" Adhesive/Polyfilm	70

OPTIX 99 Ultra-light Matte

Item #	Thickness	Description	Bulk Quantity
1X53879A	0.060"	48" x 96" Papermask	125
1X53880A	0.080"	48" x 96" Papermask	100
1X53881A	0.125"	48" x 96" Papermask	50
1X53882A	0.125"	48" x 96" Polyfilm	50



Patterned

PATTERNED ACRYLIC SHEET

PLASKOLITE offers patterned acrylic sheet for applications such as shower doors, displays, indoor/outdoor furniture, point of purchase and home furnishing products.

Custom and non-stock thicknesses, colors, patterns and sizes available. Call Customer Service for quotation and delivery information.



OPTIX Patterned Acrylic

Item #	Thickness	Description	Quantity
635000-1	0.220"	51" x 100" Adobe (Double side pattern), Polyfilm	45/Skid
P324896A	0.220	48.5" x 96.5" P-32 Worthington/Haircell, Polyfilm	50/Skid

Maximum Width Offered - 51"



Adobe



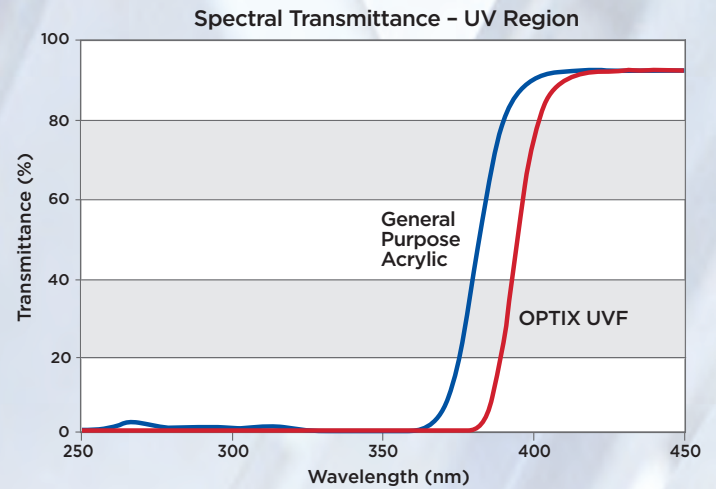
P-32

RUN-TO-SIZE AVAILABLE

PICTURE FRAME GLAZING SHEET

OPTIX FG Clear and UVF acrylic sheets are camera inspected throughout the manufacturing processes to ensure the highest quality.

- » OPTIX FG is available in a thickness range from 0.060" to 0.118".
- » OPTIX FG UVF is available in 0.098" and 0.118" thicknesses.
- » UVF non-glare acrylic available.



OPTIX FG Frame Grade Clear Acrylic

Item #	Thickness	Description	Sq. Ft.	Bulk Quantity
FG00023A	0.060"	48" x 96" Polyfilm	32	180
FG00025A	0.090"	48" x 96" Polyfilm	32	120
FG00027A	0.118"	48" x 96" Polyfilm	32	96
FG00028A	0.118"	48" x 96" Papermask	32	96

OPTIX FG Frame Grade UVF Clear Acrylic with Printed Papermask

Item #	Thickness	Description	Sq. Ft.	Bulk Quantity
1UVF040A	0.098"	48" x 96"	32	56
1UVF 041A	0.118"	48" x 96"	32	48

OPTIX Frame Grade Clear and Non-glare acrylic sheet are stocked in a variety of popular picture frame sizes. Non-glare acrylic reduces glare and reflection from any viewing angle.

0.040" (1.0 mm) Clear Acrylic with Polyfilm

Item #	Size	Sq. Ft.	Quantity
1AU0920A	8.5" x 11"	0.64	77/Bulk
1AU0921A	11" x 14"	1.06	47/Pack
1AU0924A	16" x 20"	2.22	23/Pack
1AU0925A	22" x 28"	4.27	12/Pack
1AU0926A	24" x 36"	6.00	8/Pack
1AG8458A	50.5" x 100.5"	34.17	120/Bulk

0.050" (1.2 mm) Non-Glare Acrylic with Printed Adhesive Film

Item #	Size	Sq. Ft.	Quantity
1X60068A	8" x 10"	0.55	90/Bulk
1X09241A	8" x 10"	0.55	25/Pack
1X09242A	11" x 14"	1.06	25/Pack
1X60069A	11" x 14"	1.06	47/Pack
1X09244A	12" x 16"	1.33	25/Pack

SCRATCH RESISTANT ACRYLIC SHEET

OPTIX SR acrylic sheet is optically clear and is protected with a scratch-resistant coating. The proprietary hard-coat is for flat sheet substrates while maintaining the optical benefits associated with OPTIX.

APPLICATIONS INCLUDE:

Retail displays, table tops, door panels, scheduling boards, restaurant menu applications



Solvent Exposure Result

Solvent	Result
Acetone	Good
Chlorine Bleach	
Fantastik [®] All-Purpose Cleaner	
Gasoline	
Methanol	
Methyl Ethyl Ketone	
Methylene Chloride	
10% Sodium Hydroxide	
40% Sulfuric Acid	
Windex [®] Glass Cleaner	

Environmental Durability

Test Method

Result

Environmental Durability	Test Method	Result
High Humidity Testing	140°F / 95% RH / 168 HRS	Pass
Long Term Heat Resistance	104°F / 168 HRS	Pass
High Heat Resistance	140°F / 12 HRS	Pass
Long Term Low Temperature	-4°F / 168 HRS	Pass
Thermal Cycling	(-4°F / 12 HRS) + (140°F / 12 HRS) x 3 cycles	Pass

Abrasion Resistance Test

Test Method

Change in Haze / ASTM D 1003

Uncoated Acrylic

OPTIX SR

Test Method	Uncoated Acrylic	OPTIX SR
Steel Wool Rotary Test - 12 and 15 psi - 5 revolutions	25%	Less than 1%
Taber Abrasion 500 grams - 100 revolutions	37%	Less than 5%
Eraser Abrasion	NA	0 Rating

OPTIX SR

Item #	Thickness	Description
C100061M	0.118"	48" x 96" Clear / SR-1 Coated 1 side, Scratch Resistant Coating / Papermask 1 side
C100063M	0.118"	48" x 96" Clear / SR-2 Coated 2 sides, Scratch Resistant Coating / Papermask 2 sides

RUN-TO-SIZE AVAILABLE



Antimicrobial

AMGARD ACRYLIC SHEET

AMGARD clear acrylic sheet is formulated with a silver ion antimicrobial technology that protects the sheet surface from microorganism growth and remains active for the entire life of the product. When used as protective barriers, AMGARD acrylic sheet provides a clear, solid partition between individuals. It is easy to fabricate and form for a wide range of interior applications.

- » Independent laboratory tested
- » Inhibits microbe surface degradation
- » Half the weight of glass
- » Does not shatter into sharp-edged pieces like glass
- » Easy to fabricate & clean

*AMGARD is formulated with silver ion antimicrobial technology to protect the sheet's surface. It is not designed to prevent the transmission of any disease or infectious agent.

AMGARD SR ACRYLIC SHEET

AMGARD SR scratch-resistant acrylic sheet is formulated with silver ion antimicrobial technology that protects the sheet surface from microorganism growth and remains active for the entire life of the product. The proprietary coating system provides enhanced abrasion resistance to acrylic's inherent excellent clarity. The antimicrobial coating also adds exceptional resistance to common disinfecting cleaning chemicals. The result is a high optical quality and tough antimicrobial sheet that can stand up to today's demanding safety barrier environments.

Additional benefits of AMGARD SR to those of AMGARD:

- » Abrasion resistant
- » Chemical resistant
- » High clarity

OPTIX® AMGARD and AMGARD SR

Packaging

- » Stock case packaging



APPLICATIONS INCLUDE:

Protective barriers, office partitions, safety enclosures, equipment housings



APPLICATIONS INCLUDE:

Protective barriers, office partitions, safety enclosures, interior windows and glazing

Masking

Standard Masking Configurations

Gauges: .0.220" - stock clear poly film masking two (2) sides

Full Pallet Packaging

Thickness	Sheet Size	Quantity
0.220"	48 x 96"	50

Items listed above are common stock items, but not guaranteed to be in stock - Contact Customer Service to confirm stock availability

Standard Sizes

Length: 48"
Width: 96"

Tolerances

Width & Length: + 0.000" (Minimum) + 0.250" (Maximum)

Colors, Standard

Clear

MIRRORED ACRYLIC SHEET

FABBACK acrylic mirror utilizes the industry's toughest paint backing to protect the mirrored finish during fabrication. The mirrored surface is obtained through a vacuum metallizing process with aluminum, which provides a superior reflecting surface.

FABBACK acrylic mirror is ideally suited for a variety of applications using standard plastic fabrication processes and techniques.

- » Economical
- » Does not shatter into sharp-edged pieces like glass
- » Scratch-resistant coating available

APPLICATIONS INCLUDE:

POP displays, security mirrors, artwork, home furnishing, novelty, license plates



Standard Sheet Sizes

Lengths: 96"

Widths: 48"

1" overage on length and width

Masking

2 mil Polyfilm, 3 mil laser cuttable film or papermask

Protective backings: Pressure Sensitive and Papermask

Gauges: .0060" - 0.236"

Clear Acrylic Mirror

Item #	Description	Quantity
0.060" (1.5 mm)		
C400011M	48" x 96" Film 1 side	120/Bulk
0.080" (2.0 mm)		
C500001M	48" x 96" Film 1 side	100/Bulk
0.118" (3.0 mm)		
C100047M	48" x 96" Film 1 side	80/Bulk
C100048M	48" x 96" Film 1 side	40/Bulk
C100079M	48" x 96" Film 1 side/Papermask paint side	80/Bulk
C100060M	48" x 96" SR-1 coating mirror side/Papermask paint side	15/Case
CP10076M	23 3/4" x 47 3/4" Film 1 side (mirror)	5/Case
C100055M	48" x 96" Papermask 1 side (mirror)	80/Bulk
C100049M	48" x 96" Papermask 1 side (mirror)	40/Bulk
C100077M	48" x 96" Papermask 2 sides	80/Bulk
C100073M	48" x 96" Film 1 side	15/Case
C100816M	48" x 96.5" 3 mil laser poly	80/Bulk
C100828M	48" x 96.5" 3 mil laser poly/pressure sensitive	80/Bulk
C100075M	60" x 96" Film 1 side	80/Bulk
C100430M	72" x 96" Film 1 side	30/Bulk
0.220" (5.6 mm)		
C800009M	48" x 96" Film 1 side	50/Bulk
C800007M	48" x 96" Film 1 side	12/Case
C800020M	48" x 96" Papermask 2 sides	50/Bulk
0.236" (6.0 mm)		
C200021M	48" x 96" Film 1 side	40/Bulk
C200035M	48" x 96" Film 1 side	10/Case



Colored Mirror

COLORED ACRYLIC MIRROR SHEET

PLASKOLITE stocks FABBACK mirrored acrylic sheet in many brilliant colors in 0.118" (3.0 mm) thickness. All mirror acrylic colored sheet is covered with a 3 mil laser-cuttable film. Different maskings available. Our standard overage is one (1) inch given for maximum yield for the laser cutting industry.

Please call for custom colors and non-stock sizes.



RUN-TO-SIZE AVAILABLE

Colored Acrylic Mirror

Item #	Thickness	Size	Color	Case Quantity	Skid Quantity
C100518M	0.118"	48" x 96.5"	1000 Blue	15	80
C100526M	0.118"	48" x 96.5"	2069 Blue	15	80
C100941M	0.118"	48" x 96.5"	2424 Blue	15	80
C100522M	0.118"	48" x 96.5"	1020 Purple	15	80
C100431M	0.118"	48" x 96.5"	1050 Gray	15	80
C100083M	0.118"	48" x 96.5"	2064 Gray	15	80
C100515M	0.118"	48" x 96.5"	1119 Orange	15	80
C100938M	0.118"	48" x 96.5"	1300 Gold	15	80
C100494M	0.118"	48" x 96.5"	1310 Red	15	80
C100529M	0.118"	48" x 96.5"	1400 Red	15	80
C100527M	0.118"	48" x 96.5"	2423 Red	15	80
C100046M	0.118"	48" x 96.5"	2404 Bronze	15	80
C100516M	0.118"	48" x 96.5"	1600 Bronze	15	80
C100947M	0.118"	48" x 96.5"	4674 Green	15	80
C100525M	0.118"	48" x 96.5"	2414 Green	15	80
C100521M	0.118"	48" x 96.5"	1450 Pink	15	80
C100495M	0.118"	48" x 96.5"	2120 Teal	15	80
C100514M	0.118"	48" x 96.5"	2208 Yellow	15	80
C100523M	0.118"	48" x 96.5"	2422 Amber	15	80
C101118M	0.118"	48" x 96.5"	1350 Rose Gold	15	80

0.236" thickness available in 2404 Bronze and 2064 Gray

PETG MIRROR SHEET

FABBACK PETG Mirror offers versatile fabrication properties with good impact strength, good design flexibility and speed of fabrication. This product is available in 0.040" - 0.118", in 48" x 96" sheet. The thinner gauge sheet is ideal for the fabrication of children's toys, cosmetic uses, and office supplies. FABBACK PETG Mirror is supplied in 1-sided polyfilm or papermask 1 or 2 sides.

Call for quotation, availability and delivery information.

Typical Properties*

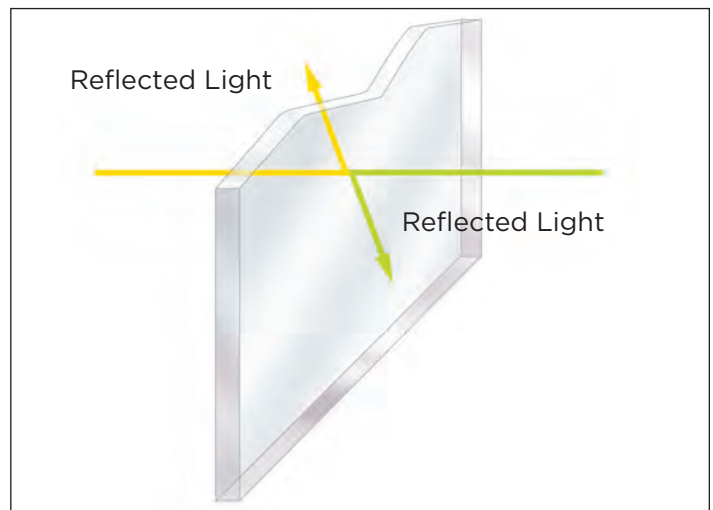
Property	Test Method	Units	Value
PHYSICAL			
Specific Gravity	ASTM D792	-	1.27
MECHANICAL			
Gardner Impact Strength	ASTM D3029 or D5420	in/lbs.	No break, 300
Flexural Strength	D790	psi	11,240
Flexural Modulus	D790	psi	309,000
Tensile Strength	D638	psi	6,990
Tensile Modulus	D638	psi	301,000
Elongation - 0.125 in. thick	D638	%	75
THERMAL			
Heat Distortion Temp. @ 264 psi	ASTM D648	°F	145
Heat Distortion Temp. @ 66 psi	ASTM D648	°F	164
Vicat Softening Point	ASTM D1525	°F	180
Coefficient of Thermal Expansion	ASTM D696	in/(in/°F)	0.00003
ELECTRICAL			
Dielectric Constant @ 100Hz	ASTM D150	-	3.46
Dielectric Strength	ASTM D149	volts/mil	420
Volume Resistivity	ASTM D257	ohms/cm	6.0 x 10 ¹⁵

FIRST SURFACE (2-Sided) MIRROR SHEET

FABBACK "First Surface" (two-sided mirror) consists of an opaque film of aluminum, protected by a tough clear coating. Light incident from either direction is reflected. "First Surface" is often used in retail display and special lighting. The dual surface reflection property is ideal for those applications where the back side of the mirror will remain exposed, or where a reflection in both directions is desired. It is available in acrylic or polycarbonate and with a color option.

Thicknesses of 0.118" and 0.236" are offered.

**For custom and non-stock sizes and thicknesses -
Contact Customer Service**



Item #	Thickness	Description	Quantity
C100069M	0.118"	48" x 96" Film First Surface Mirror	80/pallet

MARINE GRADE ACRYLIC MIRROR SHEET

Marine Grade is a high quality, premium grade of FABBACK acrylic mirror sheet. The sheets are double inspected throughout the manufacturing process to ensure maximum quality for use in boat/yacht interiors.

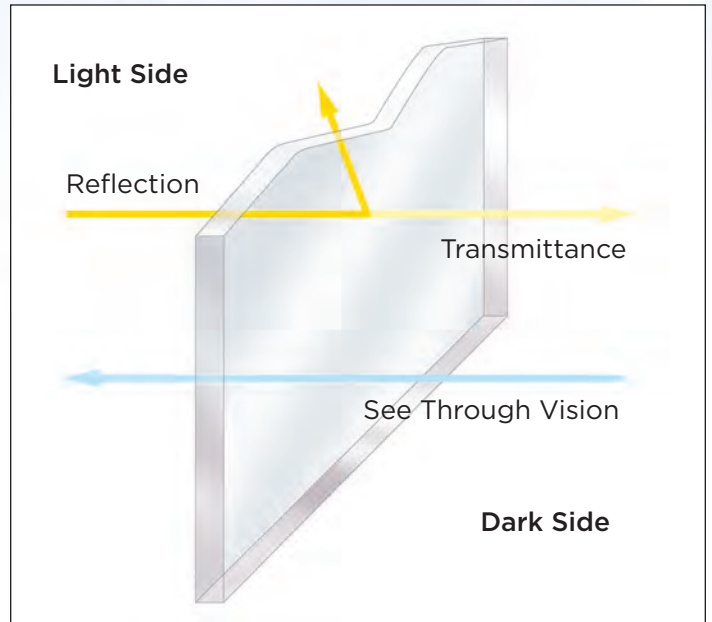
Available in 0.118" and 0.236" thicknesses in a 48" x 96" sheet size with a protective papermasking on 2 sides. Scratch-resistant coating, custom sizes, thickness and alternative protective masking options available.



FABBACK SEE-THRU MIRROR SHEET

"See-thru" or "Two-Way" mirror has a semi-transparent aluminum film deposited on the substrate that allows a percentage of incident light to pass through, while reflecting the remainder. From the illuminated side, it's a mirror; from the darkened side it's transparent. This material is used in monitoring/surveillance, infinity lighting, multiple imaging and advertising applications.

Available in 0.118" and 0.236" thicknesses in a 48" x 96" sheet size. See-Thru mirror is available in acrylic or polycarbonate with custom color, size and thickness options available.



FABBACK See-Thru Acrylic Mirror

Item #	Thickness	Description	Quantity
C100071M	0.118"	48" x 96" Film	80/pallet
C200032M	0.236"	48" x 96" Film	40/pallet



Lighting Panels

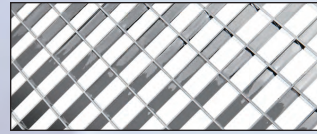
ACRYLIC LIGHTING PANELS

Egg Crate Louver (white and metallic)

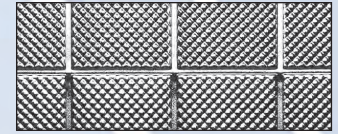
Prisma-Square

Prismatic (clear and white)

Cracked Ice (clear and white)



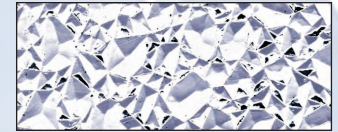
Egg Crate Louver
white and metallic



Prisma-Square



Prismatic clear and white



Cracked Ice clear and white

OPTIX Acrylic Lighting Panels

Item #	Description	Sq. Ft.	Quantity
1A00702A	23.75" x 47.75" Prisma Square Clear	7.87	20/Pack
1A20083A	23.75" x 47.75" Prismatic Clear	7.87	20/Pack
1A20084A	23.75" x 47.75" Prismatic White	7.87	20/Pack
1A30020A	23.75" x 23.75" Prismatic Clear	3.91	25/Pack
1420083A	23.75" x 47.75" Cracked Ice Clear	7.87	20/Pack
1420084A	23.75" x 47.75" Cracked Ice White	7.87	20/Pack
1405060A	36" x 60" Cracked Ice Clear	15	10/Pack
1405061A	36" x 60" Cracked Ice White	15	10/Pack
1435020A	23.75" x 23.75" Cracked Ice Clear	3.91	25/Pack

Micro-Prism Acrylic Lighting Panels

Item #	Description	Sq. Ft.	Quantity
1A90000A	23.75" x 47.75" Micro Prism White Frost Glaze	7.87	20/Pack
1A90001A	23.75" x 47.75" Micro Prism Clear Frost Glaze	7.87	20/Pack
671003-1-25	23.75" x 47.75" Micro Prism Clear	7.87	25/Pack

Egg Crate Louvers

Item #	Description	Sq. Ft.	Quantity
1199232A	1/2" x 1/2" x 3/8", 23.75" x 47.75" Egg Crate White	7.87	5/Pack
1199241A	1/2" x 1/2" x 1/2", 23.75" x 47.75" Egg Crate White	7.87	10/Pack
1199238A	1/2" x 1/2" x 3/8", 23.75" x 47.75" Egg Crate Metallic	7.87	5/Pack
1199233A	1/2" x 1/2" x 3/8", 23.75" x 47.75" Egg Crate White	7.87	15/Pack
1199234A	1/2" x 1/2" x 3/8", 23.75" x 47.75" Egg Crate Metallic	7.87	15/Pack

DURALENS®

Premium Grade Acrylic Lighting Panels

Item #	Description	Sq. Ft.	Quantity
1430083A *	23.75" x 47.75" Cracked Ice Clear	7.87	20/Pack
1430084A *	23.75" x 47.75" Cracked Ice White	7.87	20/Pack
1A30083A *	23.75" x 47.75" Prismatic Clear	7.87	20/Pack
1A00703A *	23.75" x 47.75" Prisma Square Clear	7.87	20/Pack

The above DURALENS lighting panels are covered by a 10-year limited replacement warranty against breakage. Visit www.PLASKOLITE.com/duralens_warranty for details.

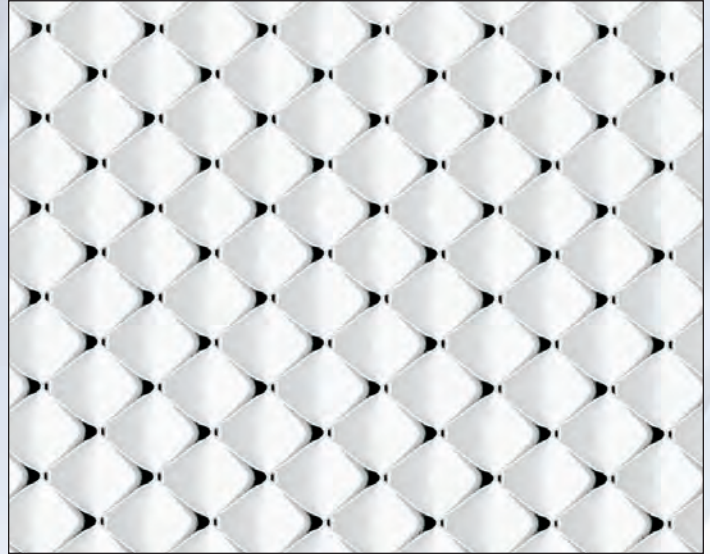
* Denotes Consumer/Retail Item



Patterned Lighting Acrylic

PATTERNED LIGHTING SHEET

Pattern 12 (PL-21) Prismatic patterned lighting sheet is available in Clear, White, Frost and Silvertint.



Acrylic Prismatic Lighting Sheet (3/16" Square Base Negative Conical Pattern)

Item #	Thickness	Description	Sq. Ft.	Quantity
225852-1	0.095"	22.50" x 46.50" Pattern 12 (PL-21)/Prismatic Clear	7.27	20/Pack
225196-1	0.095"	22.50" x 46.50" Pattern 12 (PL-21)/Prismatic Clear	7.27	300/Bulk
225181-1	0.095"	23.75" x 47.75" Pattern 12 (PL-21)/Prismatic Clear	7.87	300/Bulk
225114-1	0.095"	23.75" x 47.75" Pattern 12 (PL-21)/Prismatic Clear	7.87	20/Pack
225604-1	0.095"	23.75" x 47.75" Pattern 12 (PL-21)/Prismatic Frost	7.87	300/Bulk
225433-1	0.095"	50" x 51" Pattern 12 (PL-21)/Prismatic Clear	17.72	250/Bulk
225686-1	0.095"	50" x 100" Pattern 12 (PL-21)/Prismatic Clear	34.75	100/Bulk
225218-1	0.110"	23.75" x 47.75" Pattern 12 (PL-21)/Prismatic Clear	7.87	300/Bulk
225252-1	0.110"	23.75" x 47.75" Pattern 12 (PL-21)/Prismatic Clear	7.87	20/Pack
225122-1	0.110"	22.50" x 46.50" Pattern 12 (PL-21)/Prismatic Clear	7.27	20/Pack
225047-1	0.110"	50" x 51" Pattern 12 (PL-21)/Prismatic Clear	17.72	300/Bulk
225687-1	0.110"	50" x 100" Pattern 12 (PL-21)/Prismatic Clear	34.75	100/Bulk
225342-1	0.125"	23.75" x 47.75" Pattern 12 (PL-21)/Prismatic Clear	7.87	250/Bulk
225391-1	0.125"	23.75" x 47.75" Pattern 12 (PL-21)/Prismatic Clear	7.87	25/Pack
1A2347PA	0.125"	23.75" x 47.75" Pattern 12 (PL-21)/Prismatic Clear	7.87	15/Pack
225734-1	0.125"	22.50" x 46.50" Pattern 12 (PL-21)/Prismatic Clear	7.27	25/Pack
225354-1	0.125"	50" x 51" Pattern 12 (PL-21)/Prismatic Clear	17.72	250/Bulk
1A48484A	0.125"	48" x 96" Pattern 12 (PL-21)/Prismatic Clear	32	50/Bulk
1A48485A	0.125"	48" x 96" Pattern 12 (PL-21)/Prismatic Clear	32	5/Pack
225597-1	0.125"	23.75" x 47.75" Pattern 12 (PL-21)/Prismatic Frost	7.87	250/Bulk
225688-1	0.125"	50" x 100" Pattern 12 (PL-21)/Prismatic Clear	34.75	80/Bulk
225690-1	0.125"	50" x 100" Pattern 12 (PL-21)/Prismatic White	34.75	80/Bulk
225375-1	0.125"	23.75" x 47.75" Pattern 12 (PL-21)/Prismatic Silvertint	7.87	25/Pack
225396-1	0.125"	23.75" x 47.75" Pattern 12 (PL-21)/Prismatic Clear - Min.	7.87	200/Bulk
227001-1	0.156"	23.75" x 47.75" Pattern 12 (PL-21)/Prismatic Clear	7.87	200/Bulk
225430-1	0.187"	50" x 51" Pattern 12 (PL-21)/Prismatic Clear	17.72	150/Bulk

LED DIFFUSION SHEET

- » Matte textured surface on 2 sides
- » Light transmission consistent throughout thickness range
- » Wide range of standard grades to meet various design specifications
- » Optimized for high light transmission while maintaining excellent diffusion
- » Superior hiding power to eliminate any LED “hot-spots”
- » All grades listed are available in polymer format for extrusion purposes
- » Custom gauges and sizes available



Product	Color	Light Transmission*	Diffusion	Half Angle*	Available Thickness
OPTIX LED PXT-Clear	Clear	92%	Minimal	3	0.060", 0.080", 0.118"
OPTIX LED PXT-L	Colorless	92%	Moderate	20	0.060", 0.080", 0.118"
OPTIX LED PXT-M	Colorless	85%	Mod-High	30	0.060", 0.080", 0.118"
OPTIX LED PXT-H	Colorless	78%	High	35	0.060", 0.080", 0.118"
OPTIX LED PXT-U	Colorless	72%	Very High	45	0.060", 0.080", 0.118"
OPTIX LED PXT-HC	White	80%	High	25	0.060", 0.080", 0.118"
OPTIX LED PXT-UC	White	70%	Very High	40	0.060", 0.080", 0.118"
OPTIX LED PXT-UC+	White	60%	Very High	50	0.060", 0.080", 0.118"

*Light transmission and half angle readings based on 0.080" (2mm) thick samples.

Actual light transmission and half angle may vary, depending on profile thickness, geometry and optical patterns.

PXT-CLEAR

Item #	Thickness	Size
PXT060A	0.060"	48" X 96"
PXT031A	0.080"	48" X 96"
PXT016A	0.118"	48" X 96"

PXT-U

Item #	Thickness	Size
PXT060A	0.060"	48" X 96"
PXT031A	0.080"	48" X 96"
PXT019A	0.118"	48" X 96"

PXT-L

Item #	Thickness	Size
PXT000A	0.060"	48" X 96"
PXT001A	0.080"	48" X 96"
PXT017A	0.118"	48" X 96"

PXT-HC

Item #	Thickness	Size
PXT007A	0.060"	48" X 96"
PXT008A	0.080"	48" X 96"
PXT009A	0.118"	48" X 96"

PXT-M

Item #	Thickness	Size
PXT010A	0.060"	48" X 96"
PXT011A	0.080"	48" X 96"
PXT012A	0.118"	48" X 96"

PXT-UC

Item #	Thickness	Size
PXT020A	0.060"	48" X 96"
PXT002A	0.080"	48" X 96"
PXT003A	0.118"	48" X 96"

PXT-H

Item #	Thickness	Size
PXT004A	0.060"	48" X 96"
PXT005A	0.080"	48" X 96"
PXT006A	0.118"	48" X 96"

PXT-UC+

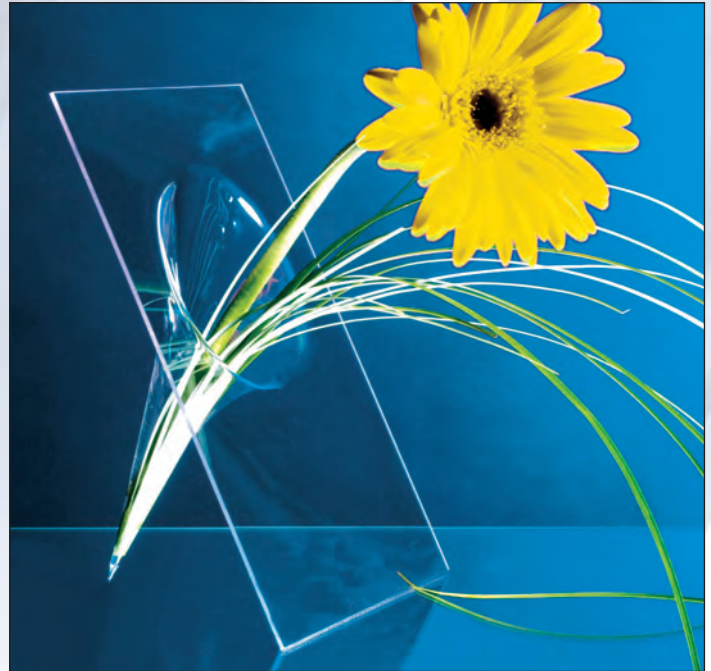
Item #	Thickness	Size
PXT014A	0.060"	48" X 96"
PXT013A	0.080"	48" X 96"
PXT015A	0.118"	48" X 96"

PETG THERMOPLASTIC SHEET

VIVAK sheet is a transparent thermoplastic sheet. Among its advantages, this sheet is made from PETG resin that is NSF listed and conforms to FDA food contact regulations. VIVAK sheet offers excellent impact strength and is a cost effective thermoplastic for the Point of Purchase (POP) industry. It offers deep draws and precise molded-in details without sacrificing structural integrity. VIVAK sheet can be bonded or fastened with adhesives, ultrasonic welding or rivets. In addition, VIVAK sheet is easily decorated by painting, silk screening, or hot stamping. VIVAK sheet is well suited for a variety of POP displays and interior signage.

APPLICATIONS INCLUDE:

Greeting card displays, revolving merchandise racks, indoor signs, POP displays, menu boards, photo frames, and slat wall inventory displays



Item #	Thickness	Description	Quantity
PE20025A	0.020"	48" x 96" Clear w/ Joggable Film	240/Skid
PE20027A	0.030"	48" x 96" Clear w/ Joggable Film	170/Skid
PE20005A	0.040"	48" x 96" Clear w/ Joggable Film	120/Skid
PE20006A	0.060"	48" x 96" Clear w/ Joggable Film	160/Skid
PE50008A	0.060"	48" x 96" Satin w/ Clear Hi-Tak/ Joggable Film	120/Skid
PE50031A	0.060"	48" x 96" Satin w/ Clear Hi Tak/ Joggable Film	10/Pk
PE22000A	0.060"	60" x 96" Clear w/ Joggable Film	64/Skid
PE20007A	0.080"	48" x 96" Clear w/ Joggable Film	120/Skid
PE20009A	0.100"	48" x 96" Clear w/ Joggable Film	100/Skid
PE20010A	0.118"	48" x 96" Clear w/ Joggable Film	80/Skid
PE22002A	0.118"	60" x 96" Clear w/ Joggable Film	32/Skid
PE20011A	0.177"	48" x 96" Clear w/ Joggable Film	54/Skid
PE22003A	0.177"	60" x 96" Clear w/ Joggable Film	22/Skid
PE20019A	0.220"	48" x 96" Clear w/ Joggable Film	45/Skid
PE20012A	0.236"	48" x 96" Clear w/ Joggable Film	20/Skid
PE20013A	0.375"	48" x 96" Clear w/ Joggable Film	13/Skid
PE21092A	0.500"	48" x 96" Clear w/ MVM White Film	15/Skid
PE20033A	0.020"	48" x 72" Clear w/ Joggable Film	240/Skid
PE20034A	0.030"	48" x 72" Clear w/ Joggable Film	170/Skid
PE20035A	0.040"	48" x 72" Clear w/ Joggable Film	120/Skid
PE20039A	0.060"	48" x 72" Clear w/ Joggable Film	160/Skid

ABS THERMOPLASTIC SHEET

ABS Thermoplastic sheet is the ideal combination of durability, formability and strength. Utility grade ABS (Acrylonitrile Butadiene Styrene) sheet is extruded with the highest quality regrind and 100% virgin cap. ABS is stocked with one side Haircell and the other smooth, with gauges available from 0.060" - 0.236". It has outstanding formability, high impact strength, and durability.

Custom color matching and sizes are available.

- » Outstanding molding and fabrication
- » Rigid and creep resistant
- » Run to size - 3000 pound minimum

APPLICATIONS INCLUDE:

Automotive, dunnage, containers



ABS

Item #	Thickness	Description	Bulk Quantity
ABS2103C	0.060"	48" x 96" White, Smooth/Haircell	125
ABS9900A	0.060"	48" x 96" Black, Smooth/Haircell	125
ABS2104C	0.093"	48" x 96" White, Smooth/Haircell	75
ABS9901A	0.093"	48" x 96" Black, Smooth/Haircell	75
ABS2105C	0.118"	48" x 96" White, Smooth/Haircell	60
ABS9902A	0.118"	48" x 96" Black, Smooth/Haircell	60
ABS2106C	0.177"	48" x 96" White, Smooth/Haircell	40
ABS9903A	0.177"	48" x 96" Black, Smooth/Haircell	40
ABS2107C	0.236"	48" x 96" White, Smooth/Haircell	30
ABS9904A	0.236"	48" x 96" Black, Smooth/Haircell	30

RUN-TO-SIZE AVAILABLE



Extruded Polycarbonate Properties

TUFFAK extruded sheet is a polished surface, UV stabilized, transparent polycarbonate product. It features outstanding impact strength, superior

dimensional stability, high temperature resistance, and high clarity. This lightweight thermoformable sheet is also easy to fabricate and decorate.

Typical Properties*

Property	Test Method	Units	Values
PHYSICAL			
Specific Gravity	ASTM D792	-	1.2
Refractive Index	ASTM D542	-	1.586
Light Transmission, Clear @ 0.118"	ASTM D1003	%	86
Light Transmission, I30 Gray @ 0.118"	ASTM D1003	%	50
Light Transmission, K09 Bronze @ 0.118"	ASTM D1003	%	50
Light Transmission, I35 Dark Gray @ 0.118"	ASTM D1003	%	18
Water Absorption, 24 hours	ASTM D570	%	0.15
Poisson's Ratio	ASTM E132	-	0.38
MECHANICAL**			
Tensile Strength, Ultimate	ASTM D638	psi	9,500
Tensile Strength, Yield	ASTM D638	psi	9,000
Tensile Modulus	ASTM D638	psi	340,000
Elongation	ASTM D638	%	110
Flexural Strength	ASTM D790	psi	13,500
Flexural Modulus	ASTM D790	psi	345,000
Compressive Strength	ASTM D695	psi	12,500
Compressive Modulus	ASTM D695	psi	345,000
Izod Impact Strength, Notched @ 0.125"	ASTM D256	ft-lbs/in	18
Izod Impact Strength, Unnotched @ 0.125"	ASTM D256	ft-lbs/in	60 (no break)
Instrumented Impact @ 0.125"	ASTM D3763	ft-lbs	47
Shear Strength, Ultimate	ASTM D732	psi	10,000
Shear Strength, Yield	ASTM D732	psi	6,000
Shear Modulus	ASTM D732	psi	114,000
Rockwell Hardness	ASTM D785	-	M70 / R118
THERMAL			
Coefficient of Thermal Expansion	ASTM D696	in/in/°F	3.75 x 10 ⁻⁵
Coefficient of Thermal Conductivity	ASTM C177	BTU-in/hr-ft ² -°F	1.35
Heat Deflection Temperature @ 264 psi	ASTM D648	°F	270
Heat Deflection Temperature @ 66 psi	ASTM D648	°F	280
Brittleness Temperature	ASTM D746	°F	-200
Shading Coefficient, clear @ 0.236"	NFRC 100-2010	-	0.97
Shading Coefficient, Gray or Bronze @ 0.236"	NFRC 100-2010	-	0.77
U factor @ 0.236" (summer, winter)	NFRC 100-2010	BTU/hr-ft ² -°F	0.85, 0.92
U factor @ 0.375" (summer, winter)	NFRC 100-2010	BTU/hr-ft ² -°F	0.78, 0.85
ELECTRICAL			
Dielectric Constant @ 10 Hz	ASTM D150	-	2.96
Dielectric Constant @ 60 Hz	ASTM D150	-	3.17
Volume Resistivity	ASTM D257	Ohm-cm	8.2 x 10 ¹⁶
Dissipation Factor @ 60 Hz	ASTM D150	-	0.0009
Arc Resistance			
Stainless Steel Strip electrode	ASTM D495	Seconds	10
Tungsten Electrodes	ASTM D495	Seconds	120
Dielectric Strength, in air @ 0.125"	ASTM D149	V/mil	380
FLAMMABILITY			
Horizontal Burn, AEB	ASTM D635	in	<1
Ignition Temperature, Self	ASTM D1929	°F	1022
Ignition Temperature, Flash	ASTM D1929	°F	824
Flame Class @ 0.060"	UL 94	-	HB
@ 0.394"	UL 94	-	V-0

*Typical properties are not intended for specification purposes.
 **Some properties characterized using non-textured sheet.

PLASKOLITE OFFERS THE FLEXIBILITY OF RUNNING CUSTOM SHEET IN THE SIZES YOU AND YOUR CUSTOMERS NEED

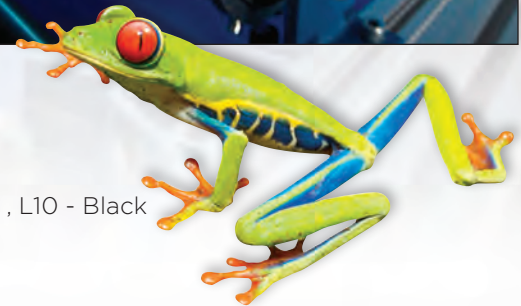
Run-to-Size sheet solutions from PLASKOLITE are the right way to think about your next order. Think smaller sheet sizes to lower cost by buying in the length and width you need. Think greener by allowing PLASKOLITE to run less material and create less scrap for you. Run-to-Size also means a more reliable and predictable price with 2-week lead times.



TUFFAK GP & TUFFAK SL Clear - 1000 LB minimum

TUFFAK GP & TUFFAK SL Standard Colors* - 3000 LB minimum

- » *GP Standard Colors - I30- Gray, I35- Dark Gray, K09- Bronze, H35- Green , L10 - Black
- » *SL Standard Colors - B54, B59 - White
- » One time custom colors - 20,000 LB minimum



Run-to-Size Parts meet:

- » Approved Material List
- » Gauge is 0.060" - 0.236"
- » Within 6" of Standard Web Width
- » Standard Web Widths are 36", 48", 60", 72", and 96"

**RUN-to-SIZE IS AVAILABLE IN
OPTIX® ACRYLIC SHEET -
CONTACT INSIDE SALES FOR DETAILS**

Think about Run-to-Size from PLASKOLITE when it's time to place your next order!

**CALL CUSTOMER SERVICE FOR DETAILS AND MINIMUMS
1.800.848.9124**

GENERAL PURPOSE POLYCARBONATE SHEET

TUFFAK GP sheet is a polished surface, UV stabilized, transparent polycarbonate product. It features outstanding impact strength, superior dimensional stability, high temperature resistance, and high clarity. This lightweight thermoformable sheet is also easy to fabricate and decorate. TUFFAK GP sheet is offered with a five (5) year Limited Product Warranty against breakage. The terms of the warranty are available upon request.

APPLICATIONS INCLUDE:

Industrial glazing, machine guards, structural parts, thermoformed and fabricated components



Packaging

- » Weight per Case: Varies per gauge
- » Weight per Pallet: 2,000 lbs.
- » Weight per Half Pallet: 1,000 lbs.

Masking

Standard Masking Configurations

Gauges: 0.030" - 0.236", Makro Mask, Two (2) Sides

0.375" - 0.500", Paper Masking, Two (2) Sides

Additional masking available - Price Per Side

Case Packaging (030 - 040 clear/ 060 - 500 colors only)

Gauge	0.030	0.040	0.060	0.080	0.093	0.118	0.177	0.220	0.236	0.375	0.500
Sheet Size 48 x 96	50	37	-	-	-	13	8	6	6	4	3

Pallet Packaging

Gauge	0.030	0.040	0.060	0.080	0.093	0.118	0.177	0.220	0.236	0.375	0.500
Sheet Size	48 x 96	-	-	-	-	85	60	45	45	25	20
	60 x 96	-	-	-	-	70	50	35	36	22	16
	60 x 120	-	-	-	-	-	36	28	-	17	-
	72 x 96	-	-	-	-	55	40	30	30	18	-

Items listed above are common stock items, but not guaranteed to be in stock - Contact your Customer Service Representative to confirm stock availability

Half Pallets

Gauge	0.030	0.040	0.060	0.080	0.093	0.118	0.156	0.177	0.220	0.236	0.375	0.500
Sheet Size	48 x 96	-	-	83	63	55	-	-	-	-	-	-
	48 x 120	-	-	-	-	35	-	23	18	-	15	8
	60 x 96	-	-	-	-	-	-	-	-	-	-	8
	60 x 120	-	-	-	-	27	-	-	-	-	-	-
	72 x 96	-	-	-	-	-	-	-	-	-	9	7
	72 x 120	-	-	-	-	-	-	-	13	-	-	-

Standard Sizes

- Lengths: 24", 96" (Gauges: 0.030" - 0.040")
- Lengths: 96", 120", 144" (Gauges: 0.060" - 0.500")
- Widths: 48" (Gauges: 0.030" - 0.060")
- Widths: 48", 60", 72" (Gauges: 0.080" - 0.093")
- Widths: 48", 60", 72", 96" (Gauges: 0.118" - 0.500")

Tolerances

- Width & Length, Standard: 0.000" (Min) - 0.625" (Max)
- Width & Length, Non-standard 0.000" (Min) - 0.250" (Max)

Colors, Standard

- 0A00 - Clear (Gauges: All)
- K09 - Bronze (Gauges: 0.118" - 0.375")
- 130 - Gray, Light (Gauges: 0.118" - 0.500")
- 135 - Gray, Dark (Gauges: 0.118", 0.236")
- L10 - Black (Gauges: 0.060", 0.118", 0.177", 0.236")
- B59 - White (Gauges: 0.060")
- B54 - White non-stock
- H35 - Green non-stock

GENERAL PURPOSE / FLAME RETARDANT POLYCARBONATE SHEET

TUFFAK GP-V sheet is a polished surface, UV stabilized, transparent polycarbonate product. GP-V is a flame retardant grade with a UL 94 V-2 rating at 0.060" and greater, then improves to V-0 rating at 0.220" and greater. Other properties include outstanding impact strength, superior dimensional stability, high temperature resistance, and high clarity. This lightweight thermoformable sheet is also easy to fabricate and decorate. TUFFAK GP-V sheet is offered with a five (5) year Limited Product Warranty against breakage. The terms of the warranty are available upon request.

APPLICATIONS INCLUDE:

Industrial parts and components of electrical devices requiring UL 94 V-rated performance, thermoformed and fabricated parts



Packaging

» Weight per Case: Varies per gauge

Masking

Standard Masking Configurations

Gauges: 0.030" - 0.236", Makro Mask, Two (2) Sides

0.375" - 0.500", Paper Masking, Two (2) Sides

Additional masking available - Price Per Side

Packaging

Gauge	0.030	0.040	0.060	0.080	0.093	0.118	0.177	0.220	0.236	0.375	0.500
Sheet Size 48 x 96	-	-	-	-	-	-	-	-	45	-	-

Standard Sizes

Lengths: 24", 96" (Gauges: 0.030" - 0.040")

Lengths: 96", 120", 144" (Gauges: 0.060" - 0.500")

Widths: 48" (Gauges: 0.030" - 0.060")

Widths: 48", 60", 72" (Gauges: 0.080" - 0.093")

Widths: 48", 60", 72", 96" (Gauges: 0.118" - 0.500")

Tolerances

Width & Length, Standard: 0.000" (Min) - 0.625" (Max)

Width & Length, Non-standard 0.000" (Min) - 0.250" (Max)

Colors, Standard

0A00 - Clear (Gauges: All)

K09 - Bronze (Gauges: 0.118" - 0.375")

130 - Gray, Light (Gauges: 0.118" - 0.500")

135 - Gray, Dark (Gauges: 0.118", 0.236")

L10 - Black (Gauges: 0.060", 0.118", 0.177", 0.236")

B59 - White (Gauges: 0.060")

B54 - White non-stock

H35 - Green non-stock

Textures, Available

MA - Matte

SA - Satin

SH - Haircell, Non-gloss

80 - Pebble/Smooth

89 - Pebble/Grain

90 - Grain/Smooth

MATTE TEXTURED POLYCARBONATE SHEET

TUFFAK GP Matte sheet is a translucent, UV stabilized, polycarbonate product with a matte textured surface on one side. This unique matte texture obscures vision and reduces glare. The product features outstanding impact strength, superior dimensional stability, and high temperature resistance. TUFFAK GP Matte sheet is offered with a five (5) year Limited Product Warranty against breakage. The terms of the warranty are available upon request.

APPLICATIONS INCLUDE:

Industrial glazing, privacy glazing, thermoformed and fabricated translucent components, signs, displays, lighting covers

PEBBLE TEXTURED POLYCARBONATE SHEET

TUFFAK GP Pebble sheet is a translucent, UV stabilized, polycarbonate product with a pebble texture on one side. This unique pebble texture is useful in obscuring vision, reducing glare, and helps to hide the appearance of surface scratches. The textured product features outstanding impact strength, superior dimensional stability, high temperature resistance, and flame resistance. TUFFAK GP Pebble sheet is offered with a five (5) year Limited Product Warranty against breakage. The terms of the warranty are available upon request.

APPLICATIONS INCLUDE:

Privacy glazing, decorative glazing, awnings, skylights, shower doors, factory over-glazing, lighting covers



Packaging

- » Weight per Case: Varies per gauge
- » Weight per Pallet: 2,000 lbs.
- » Weight per Half Pallet: 1,000 lbs.

Masking

Standard Masking Configurations

Gauges: 0.118" - 0.236", Makro Mask, One (1) Side - Non-texture

Pebble texture - No masking

Additional masking available - Price Per Side

Case Packaging - clear

Gauge	0.118	0.156	0.177	0.236
Sheet Size 48 x 96	13	10	8	6

Items listed above are common stock items, but not guaranteed to be in stock - Contact your Customer Service Representative to confirm stock availability

Standard Sizes

Lengths: 96", 120", 144" (Gauges: 0.060" - 0.500")

Widths: 48" (Gauges: 0.030" - 0.060")

Tolerances

Width & Length, Standard: 0.000" (Min) - 0.625" (Max)

Width & Length, Non-standard 0.000" (Min) - 0.250" (Max)

Colors, Standard

OA00 - Clear (Gauges: All)

Textures, Available

MA - Matte 0.118" 48" x 96 only

80/90 - Pebble/Grain 0.236" 48" x 96" only

Prismatic 0.125" 0.156" 0.187" 48" x 96" only

SA - Satin - non-stock

SH - Haircell Non-gloss - non-stock

80 - Pebble/Smooth - non-stock

90 - Grain/Smooth - non-stock

MATTE TEXTURED POLYCARBONATE SHEET

TUFFAK GP-V Matte sheet is a translucent, UV stabilized, polycarbonate product with a matte textured surface on one side. This unique matte texture obscures vision and reduces glare. The product features outstanding impact strength, superior dimensional stability, high temperature resistance and meets a vertical burn resistance per UL 94 @ 0.213" and thicker. TUFFAK GP-V Matte sheet is offered with a five (5) year Limited Product Warranty against breakage. The terms of the warranty are available upon request.

APPLICATIONS INCLUDE:

Industrial glazing, privacy glazing, thermoformed and fabricated translucent components, signs, displays, lighting covers

PEBBLE TEXTURED POLYCARBONATE SHEET

TUFFAK GP-V Pebble sheet is a translucent, UV stabilized, polycarbonate product with a pebble texture on one side. This unique pebble texture is useful in obscuring vision, reducing glare, and helps to hide the appearance of surface scratches. The textured product features outstanding impact strength, superior dimensional stability, high temperature resistance and meets a vertical burn resistance per UL 94 @ 0.213" and thicker. TUFFAK GP-V Pebble sheet is offered with a five (5) year Limited Product Warranty against breakage. The terms of the warranty are available upon request.

APPLICATIONS INCLUDE:

Privacy glazing, decorative glazing, awnings, skylights, shower doors, factory over-glazing, lighting covers

Packaging

- » Weight per Case: Varies per gauge
- » Weight per Pallet: 2,000 lbs.
- » Weight per Half Pallet: 1,000 lbs.

Masking

Standard Masking Configurations

Gauges: 0.118" - 0.236", Makro Mask, One (1) Side - Non-texture
Pebble texture - No masking

Additional masking available - Price Per Side

Case Packaging .118 - .236 clear

Gauge	0.118	0.156	0.177	0.236
Sheet Size 48 x 96	13	10	8	6

Items listed above are common stock items, but not guaranteed to be in stock - Contact your Customer Service Representative to confirm stock availability

Standard Sizes

Lengths: 96", 120", 144" (Gauges: 0.060" - 0.500")
Widths: 48" (Gauges: 0.030" - 0.060")

Tolerances

Width & Length, Standard: 0.000" (Min) - 0.625" (Max)
Width & Length, Non-standard 0.000" (Min) - 0.250" (Max)

Colors, Standard

0A00 - Clear (Gauges: All)

Textures, Available

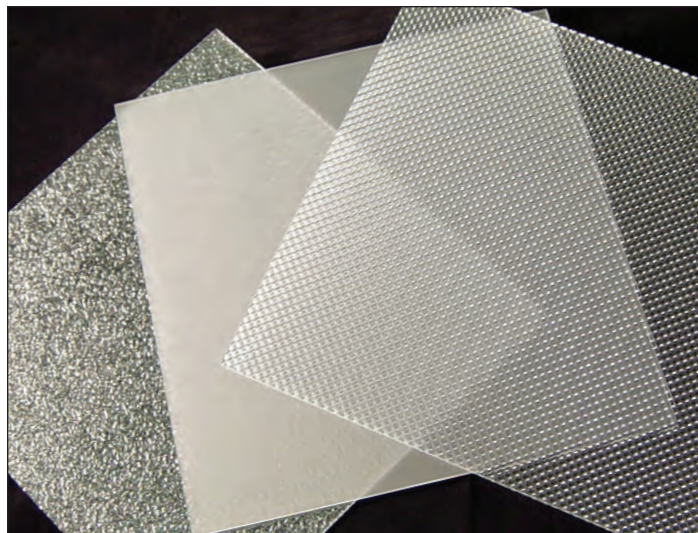
MA - Matte 0.118" 48" x 96" only
80/90 - Pebble/Grain 0.236" 48" x 96" only
Prismatic 0.125" 0.156" 0.187" 48" x 96" only
SA - Satin - non-stock
SH - Haircell Non-gloss - non-stock
80 - Pebble/Smooth - non-stock
90 - Grain/Smooth - non-stock

PRISMATIC TEXTURED POLYCARBONATE SHEET

TUFFAK GP Prismatic and GP-V Prismatic sheet are translucent, UV stabilized, polycarbonate products with a prismatic texture on one side. This prismatic pattern has been optimized for light diffusion and light transmission, making it an excellent choice for most conventional lighting applications. The textured product features outstanding impact strength, high temperature resistance, superior dimensional stability, and is easy to fabricate. The GP Prismatic meets a vertical burn resistance per UL 94 @ 0.213" and thicker. TUFFAK GP Prismatic sheet is offered with a five (5) year Limited Product Warranty against breakage. The terms of the warranty are available upon request.

APPLICATIONS INCLUDE:

Lighting lenses and covers



GP Prismatic Packaging

- » Weight per Case: Varies per gauge
- » Weight per Pallet: Varies per gauge

Masking

Standard Masking Configuration

Gauges: All, PE-Cling One (1) Side - masked on non-textured side

Case Packaging							
Gauge	0.110	0.118	0.125	0.156	0.177	0.187	
Sheet Size 48 x 96	-	-	13	10	-	8	

Pallet Packaging							
Gauge	0.110	0.118	0.125	0.156	0.177	0.187	
Sheet Size 48 x 96	-	-	-	-	-	-	

Items listed above are common stock items, but not guaranteed to be in stock - Contact your Customer Service Representative to confirm stock availability

Standard Sizes

Lengths: 96" (Gauges: 0.110" - 0.187")

Widths: 48" (Gauges: 0.110" - 0.187")

Tolerances

Width & Length, Standard: 0.000" (Min) - 0.625" (Max)

Width & Length, Non-standard 0.000" (Min) - 0.250" (Max)

Colors, Standard

0A00 - Clear (Gauges: All)

I30 - Gray (2.000 lb Minimum)

I35 - Gray (2.000 lb Minimum)

K09 - Bronze (2.000 lb Minimum)

B59 - White (2.000 lb Minimum)

B54 - White (2.000 lb Minimum)

H35 - Green (2.000 lb Minimum)

L10 - Black (2.000 lb Minimum)

GP-V Prismatic Packaging

- » Custom, non-stock
- » Weight per Case: Varies per gauge
- » Weight per Pallet: Varies per gauge

Masking

Standard Masking Configuration

Gauges: All, PE-Cling One (1) Side - masked on non-textured side

Pallet Packaging						
Gauge	0.118	0.125	0.156	0.177	0.187	
Sheet Size 48 x 96	-	-	-	-	-	

These items are standard products, but not stocked items - Contact your Customer Service Representative for availability

Standard Sizes

Lengths: 96" (Gauges: 0.118" - 0.187")

Widths: 48" (Gauges: 0.118" - 0.187")

Tolerances

Width & Length, Standard: 0.000" (Min) - 0.625" (Max)

Width & Length, Non-standard 0.000" (Min) - 0.250" (Max)

Colors, Standard

0A00 - Clear (Gauges: All)

OPTICAL QUALITY POLYCARBONATE SHEET

TUFFAK OP sheet is a polished surface, UV stabilized, transparent polycarbonate product. Designed for use in applications requiring improved optical quality, it features outstanding impact strength, superior dimensional stability, high temperature resistance, and high clarity. This lightweight thermoformable sheet is also easy to fabricate and decorate. TUFFAK OP sheet is offered with a five (5) year Limited Product Warranty against breakage. The terms of the warranty are available upon request.

APPLICATIONS INCLUDE:

Recreational vehicle windscreens, face shields, laminates



Packaging

» Custom orders – not a stock item

Masking

Standard Masking Configurations

Gauges: 0.030" - 0.236", Makro Mask, Two (2) Sides
0.375" - 0.500", Paper Masking, Two (2) Sides

Case Packaging

Gauge		0.040	0.060	0.080	0.093	0.118	0.177	0.220	0.236	0.375	0.500
Sheet Size	48 x 96	-	-	-	-	-	-	-	-	-	-
	60 x 96	-	-	-	-	-	-	-	-	-	-
	72 x 96	-	-	-	-	-	-	-	-	-	-

**Items listed above are common stock items, but not guaranteed to be in stock –
Contact your Customer Service Representative to confirm stock availability**

Standard Sizes

Lengths: 96" (Gauges: 0.118" - 0.500")

Widths: 48", 60", 72", 96" (Gauges: 0.118" - 0.500")

Tolerances

Width & Length, Standard: 0.000" (Min) - 0.625" (Max)

Width & Length, Non-standard 0.000" (Min) - 0.250" (Max)

Colors, Standard

0A00 - Clear (Gauges: All)

I30 - Gray (3,000 lb Minimum)

I35 - Gray (3,000 lb Minimum)

K09 - Bronze (3,000 lb Minimum)

B59 - White (3,000 lb Minimum)

B54 - White (3,000 lb Minimum)

H35 - Green (3,000 lb Minimum)

L10 - Black (3,000 lb Minimum)

TUFFAK[®]-OP-V

Flame Retardant Optical

OPTICAL QUALITY / FLAME RETARDANT POLYCARBONATE SHEET

TUFFAK OP-V sheet is a polished surface, UV stabilized, transparent polycarbonate product. OP-V is a flame retardant grade, UL 94 V-2 rating at 0.060" and greater, and V-0 rating at 0.236" and greater. Designed for use in applications requiring improved optical quality, it features outstanding impact strength, superior dimensional stability, high clarity high temperature resistance and meets a vertical burn resistance per UL 94 @ 0.213" and thicker. This lightweight thermoformable sheet is also easy to fabricate and decorate. TUFFAK OP-V sheet is offered with a five (5) year Limited Product Warranty against breakage. The terms of the warranty are available upon request.

APPLICATIONS INCLUDE:

Electrical cabinet doors and thermoformed enclosures



Packaging

» Custom orders – not a stock item

Masking

Standard Masking Configurations

Gauges: 0.030" - 0.236", Makro Mask, Two (2) Sides
0.375" - 0.500", Paper Masking, Two (2) Sides

		Case Packaging									
Gauge		0.040	0.060	0.080	0.093	0.118	0.177	0.220	0.236	0.375	0.500
Sheet Size	48 x 96	-	-	-	-	-	-	-	-	-	-
	60 x 96	-	-	-	-	-	-	-	-	-	-
	72 x 96	-	-	-	-	-	-	-	-	-	-

Items listed above are common stock items, but not guaranteed to be in stock – Contact your Customer Service Representative to confirm stock availability

Standard Sizes

Lengths: 96" (Gauges: 0.118" - 0.500")

Widths: 48", 60", 72", 96" (Gauges: 0.118" - 0.500")

Tolerances

Width & Length, Standard: 0.000" (Min) - 0.625" (Max)

Width & Length, Non-standard 0.000" (Min) - 0.250" (Max)

Colors, Standard

0A00 - Clear (Gauges: All)

I30 - Gray (3,000 lb Minimum)

I35 - Gray (3,000 lb Minimum)

K09 - Bronze (3,000 lb Minimum)

B59 - White (3,000 lb Minimum)

B54 - White (3,000 lb Minimum)

H35 - Green (3,000 lb Minimum)

L10 - Black (3,000 lb Minimum)

FDA FOOD CONTACT COMPLIANT POLYCARBONATE SHEET

TUFFAK FD sheet is a non-UV stabilized transparent polycarbonate product which complies with FDA regulation 21 CFR § 177.1580 requirements for food contact and is produced with NSF certified resin. Ideally suited for demanding applications in food processing environments, as well as medical applications, this lightweight thermoformable sheet is also easy to fabricate and decorate. TUFFAK FD sheet is offered with a five (5) year Limited Product Warranty against breakage. The terms of the warranty are available upon request.

APPLICATIONS INCLUDE:

Food processing equipment and guards, bulk food bins, candy molds, sneeze guards, single use autoclave packaging, hospital trays, bassinets, incubators, medical device storage containers



Packaging

- » Weight per Case: Varies per gauge
- » Weight per Pallet: 2,000 lbs.

Masking

Standard Masking Configurations

- Gauges: 0.060" - 0.236", Makro Mask, Two (2) Sides
- 0.375" - 0.500", Paper Masking, Two (2) Sides

Case Packaging

Gauge	0.060	0.080	0.093	0.118	0.177	0.220	0.236	0.375	0.500
Sheet Size 48 x 96	-	-	-	-	-	-	6	-	-

Items listed above are common stock items, but not guaranteed to be in stock - Contact your Customer Service Representative to confirm stock availability

Standard Sizes

Lengths: 96", 120", 144" (Gauges: 0.040" - 0.500")
 Widths: 48" (Gauges: 0.040" - 0.060")

Tolerances

Width & Length, Standard: 0.000" (Min) - 0.625" (Max)
 Width & Length, Non-standard 0.000" (Min) - 0.250" (Max)

Colors, Standard

0A00 - Clear (Gauges: All)

Textures, Non-stock

- MA - Matte
- SA - Satin
- HC - Haircell, Non-gloss
- SH - Haircell, Gloss
- 80 - Pebble/Smooth
- 89 - Pebble/Grain
- 90 - Grain/Smooth

FLAME INHIBITING POLYCARBONATE SHEET

TUFFAK FI sheet is a flame retardant, non-UV stabilized, clear polycarbonate product with a UL 94 V-0 rating at 0.060" and UL 94 5VA rating at 0.118" and meets FAR 25.853 (a), 1, (i) (ii) requirements at 0.060" and thicker. It features high impact strength, superior dimensional stability, high temperature resistance, and high clarity. This lightweight thermoformable sheet is also easy to fabricate and decorate.

APPLICATIONS INCLUDE:

Electrical devices, equipment housings, switchgear covers, light fixtures



Packaging

- » Weight per Case: Varies per gauge
- » Weight per Pallet: 2,000 lbs.

Masking

Standard Masking Configurations

Gauges: 0.060" - 0.125", Plain Makro Mask, Two (2) Sides

Case Packaging

Gauge	0.060	0.080	0.093	0.125
48 x 96	26	-	-	13
Sheet Size 60 x 96	-	-	-	-
72 x 96	-	-	-	-

Items listed here are common stock items, but not guaranteed to be in stock - Contact your Customer Service Representative to confirm stock availability

Standard Sizes

Lengths: 96" (Gauges: 0.060" - 0.125")

Widths: 48" (Gauges: 0.060" - 0.125")

Widths: 60" (Gauges: 0.125" only)

Tolerances

Width & Length, Standard: 0.000" (Min) - 0.625" (Max)

Width & Length, Non-standard 0.000" (Min) - 0.250" (Max)

Colors, Standard

0A00 - Clear

LOW FLAMMABILITY POLYCARBONATE SHEET

TUFFAK LF sheet is a flame resistant, UV stabilized, transparent polycarbonate product. It features a UL 94 V-0 rating and meets FAR 25.853 (a), 1, (i) (ii) requirements at 0.080" and thicker. The product offers high impact strength, superior dimensional stability, high temperature resistance, and high clarity. This lightweight thermoformable sheet is also easy to fabricate and decorate.

APPLICATIONS INCLUDE:

Electrical devices, equipment housings, switchgear covers, light fixtures



Packaging

- » Weight per Case: Varies per gauge
- » Weight per Pallet: 2,000 lbs.

Masking

Standard Masking Configurations

Gauges: 0.080" - 0.250", Makro Mask, Two (2) Sides

Additional Masking Available for this Product - Call for quote

Case Packaging

Gauge	0.080	0.093	0.118	0.125	0.177	0.187	0.250
48 X 96	20	17	13	13	-	8	-
Sheet Size 60 x 96	-	-	-	-	-	-	-
72 x 96	-	-	-	-	-	-	-

Items listed above are common stock items, but not guaranteed to be in stock - Contact your Customer Service Representative to confirm stock availability

Standard Sizes

Lengths: 96" (Gauges: 0.080" - 0.250")

Widths: 48", 60", 72" (Gauges: 0.080" - 0.250")

Tolerances

Width & Length, Standard: 0.000" (Min) - 0.625" (Max)

Width & Length, Non-standard 0.000" (Min) - 0.250" (Max)

Colors, Standard

0A00 - Clear (Gauges: All)

I30 - Gray (3,000 lb Minimum)

K09 - Bronze (3,000 lb Minimum)

UV RESISTANT SIGN GRADE POLYCARBONATE

TUFFAK SL Sign Grade sheet is a polycarbonate product with an advanced UV resistance technology that promotes long lasting outdoor weathering performance. It features outstanding impact strength, excellent dimensional stability, high temperature resistance, and high clarity. This lightweight thermoformable sheet is also easy to fabricate and decorate. TUFFAK SL is offered in clear, a wide range of standard sign colors, or can be custom matched to any color. The product, available in either sheet or reels, has a proven track record of outstanding performance in extreme environments and meets the UL 879 standard for electric sign components. A ten (10) year limited product warranty is available for both clear and colors for breakage resistance. Clear sheet is also covered for weathering resistance. The terms of the warranty are available upon request.

APPLICATIONS INCLUDE:

Flat and formed sign faces and channel letters



Packaging

- » Weight per Case: Varies per gauge
- » Weight per Pallet: 2,000 lbs.
- » Reels: Varies per gauge

Masking

- Standard Masking Configuration as priced above
- Reels: Sign Masking
- Sheets: Printed Macro Masking, Plain Macro Masking

Case / Reel Packaging

Gauge	Clear				White					Reels (ft)				
	0.118	0.150	0.177	0.236	0.118	0.150	0.177	0.236		0.093	0.118	0.150	0.177	0.236
48 x 96	43	-	-	23	-	-	-	-	42"	625	600	500	400	250
52 x 100	43	-	30	-	43	-	30	23	55"	625	600	500	400	250
52 x 125	-	-	23	-	35	-	23	-	67"	625	600	500	400	250
75 x 100	-	-	20	-	28	-	20	-	76"	625	500	450	350	250
75 x 125	-	-	15	-	22	-	15	-	100"	625	450	400	325	250

Items listed above are common stock items, but not guaranteed to be in stock - Contact your Customer Service Representative to confirm stock availability

Standard Sizes

- Lengths, Sheets: 100", 125" (Gauges: 0.093" - 0.236")
- Lengths, Reels: Refer to chart above.
- Widths, Sheets: 52", 75" (Gauges: 0.093" - 0.236")
- Widths, Reels: 42", 55", 67", 78", 102" (Gauges: 0.093" - 0.236")

Tolerances

- Width & Length, Standard: 0.000" (Min) - 0.625" (Max)
- Width & Length, Non-standard 0.000" (Min) - 0.250" (Max)

Colors, Standard

- OA00 - Clear
- D83 - Red (2283)
- D93 - Red (2793)
- D92 - Red (6192)
- F14 - Blue (2114)
- F76 - Blue (2051)
- H08 - Green (2108)
- H35 - Green
- M37 - Yellow (2037)
- C19 - Orange (2119)
- L10 - Black
- B59/B54 - White
- K09 - Bronze
- I30 - Gray
- I35 - Gray, dark

TUFFAK[®]-SL Matte

Sign Grade Matte

UV RESISTANT / SIGN MATTE POLYCARBONATE

TUFFAK SL Sign Matte sheet is an enhanced UV resistant polycarbonate product with a matte surface texture designed to reduce glare. The product's advanced UV resistance technology promotes long lasting outdoor weathering performance. It features outstanding impact strength, excellent dimensional stability, high temperature resistance, and high clarity. This lightweight thermoformable sheet is also easy to fabricate and decorate. SL Sign Matte is offered in clear, a wide range of standard sign colors, or can be custom matched to any color. The product, available in either sheet or reels, has a proven track record of outstanding performance in extreme environments and meets the UL 879 standard for electric sign components. A ten (10) year limited product warranty is available for both clear and colors for breakage resistance. Clear sheet is also covered for weathering resistance. The terms of the warranty are available upon request.

APPLICATIONS INCLUDE:

Flat and formed sign faces and channel letters



Packaging

- » Weight per Pallet: 2,000 lbs.
- » Reels: Varies per gauge

Masking

Standard Masking Configuration as priced above

Reels: Hi-tack Masking – Texture side, Plain Makro Masking – smooth side

Sheets: Hi-tack Masking – Texture side, Plain Makro Masking – smooth side

Clear Sheet / Reels Packaging

		Clear Sheet				Reels				
Gauge		0.118	0.150	0.177	0.236	Gauge	0.118	0.150	0.177	0.236
Sheet Size	48 x 96	-	-	-	-	55	450'	-	-	-
	52 x 100	43	-	-	-	Width 67	-	-	-	-
	52 x 125	-	-	-	-	(in.) 76	-	-	-	-
	75 x 100	-	-	20	-	100	-	-	-	-
	75 x 125	-	-	-	-					

Items listed above are common stock items, but not guaranteed to be in stock – Contact your Customer Service Representative to confirm stock availability

Standard Sizes

Lengths, Sheets: 100", 125" (Gauges: 0.118" - 0.236")

Lengths, Reels: Refer to chart above.

Widths, Sheets: 52", 75" (Gauges: 0.118" - 0.236")

Widths, Reels: 42", 55", 67", 78", 102" (Gauges: 0.118" - 0.236")

Call for quote on Run-to-Size

Tolerances

Width & Length, Standard: 0.000" (Min) - 0.625" (Max)

Width & Length, Non-standard 0.000" (Min) - 0.250" (Max)

Colors, Standard

0A00 - Clear

Customer Colors – Call for quote on pricing and minimums

SKYLIGHT POLYCARBONATE SHEET

TUFFAK SK sheet is a non-UV enhanced sheet with a prismatic texture. It is designed for use as an interior lens of a skylight system, protected from direct sunlight exposure by a UV-resistant outer cover such as TUFFAK SK1* sheet. The prismatic texture helps to diffuse the sun's light throughout the interior space. TUFFAK SK can be drape or thermoformed for use in contoured applications such as domed skylights. In either flat or contoured geometries, it has significantly higher impact resistance compared to acrylic, impact modified acrylic, or glass. TUFFAK SK sheet is offered with a five (5) year Limited Product Warranty against breakage. The terms of the warranty are available upon request.

APPLICATIONS INCLUDE:

Interior light for skylights and barrel vaults

*Contact your Customer Service Representative for information about the SK Family of products



Packaging

» Custom, non-stock

Masking

Standard Masking Configurations

Gauges, All: PE-Cling One-side, masked on the non-textured side

Case Packaging

Gauge	0.110	0.118	0.150	0.177	0.236
Sheet Size 60 x 96	-	-	-	-	-

Standard Sizes

Lengths: 96" (Gauges: 0.110" - 0.236")

Widths: 48" (Gauges: 0.110" - 0.236")

Tolerances

• Width & Length: 0.000" (Min) - 0.250" (Max)

Colors, Standard

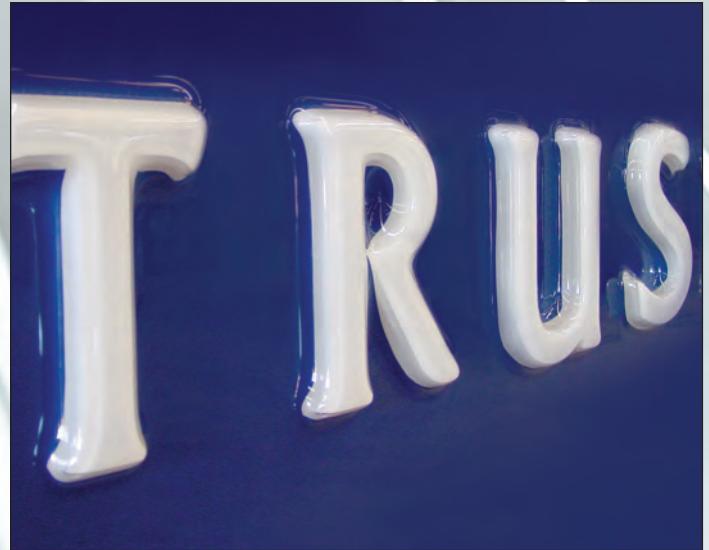
A00 - Clear (1,000 lbs. Minimum)

LIGHT DIFFUSING POLYCARBONATE SHEET

TUFFAK LD sheet is a polycarbonate product designed with an advanced light diffusion technology that provides excellent light uniformity without sacrificing light transmission. The proprietary diffuser technology eliminates visible hot spots from pinpoint LED lights in typical flat and formed sign applications. LD is available in a range of standard sign colors and can be custom matched to any color. TUFFAK LD is easy to form, fabricate, and decorate, and has excellent impact strength and dimensional stability. The product's UV resistance technology assures long lasting outdoor weathering performance. TUFFAK LD is offered with a ten (10) year limited product warranty against breakage. The terms of the warranty are available upon request.

APPLICATIONS INCLUDE:

Flat and formed sign faces, channel letters, and lighting fixture covers



Packaging

- » Weight per Case: Varies per gauge
- » Weight per Pallet: 2,000 lbs.

Masking

Standard Masking Configuration as priced above

Reels: PE-Cling, 2-sides

Sheets: Makro Mask, Two (2) Sides

Masking

Additional Masking Available for this Product - Price Per Side

Masking	Description
Paper	5 mil adhesive backed craft paper printed
HTPE	2 mil high tack PE based masking with adhesive
Joggable	2 mil static cling PE based masking with matte surface finish
PE-Cling	2 mil static cling PE based masking

White Sheet / Reels Packaging (offered sizes)

White Sheet					Reels				
Gauge	0.118	0.150	0.177	0.236	Gauge	0.118	0.150	0.177	0.236
Sheet Size	48 x 96	-	-	-	42	450'	400'	-	-
	52 x 100	13	10	-	Width (in.)	-	400'	-	-
	52 x 125	13	10	8	67	-	400'	-	-
	75 x 100	-	10	-	78	-	-	300'	-
	75 x 125	13	10	8	102	-	-	300'	-

Items listed above are common stock items, but not guaranteed to be in stock - Contact your Customer Service Representative to confirm stock availability

Standard Sizes

Lengths, Sheets: 100", 125" (Gauges: 0.093" - 0.236")

Lengths, Reels: Refer to chart above.

Widths, Sheets: 52", 75" (Gauges: 0.093" - 0.236")

Widths, Reels: 42", 55", 67", 78", 102" (Gauges: 0.093" - 0.236")

Tolerances

Width & Length, Standard: 0.000" (Min) - 0.625" (Max)

Width & Length, Non-standard 0.000" (Min) - 0.250" (Max)

Colors, Standard

B27/B48 - White

C59 - Orange - non stock

D96, D98, D99 - Red - non stock

F84, F85 - Blue - non stock

H87 - Green - non stock

M72 - Yellow - non stock

EXTENDED UV RESISTANT POLYCARBONATE

TUFFAK UV sheet is a transparent polycarbonate product with an advanced UV resistant technology that assures long lasting outdoor weathering performance in flat and curved glazing applications. It has higher impact resistance than acrylic and glass, and it can be cold-formed during installation. TUFFAK UV is produced with high optical quality and minimal distortion in clear, a range of standard architectural tints, or can be custom matched to any color. TUFFAK UV has a ten (10) year Limited Product Warranty against breakage, yellowing, and loss of light transmission. The terms of the warranty are available upon request.

APPLICATIONS INCLUDE:

Awnings, entryway canopies, skylights, barrel vaults, glazed archways, covered pedestrian walkways, and sloped, vertical, and curved glazing



Packaging

» Custom, non-stock

Half Pallet Packaging

Gauge	0.118	0.177	0.236	0.375	0.500
48 x 96	-	-	-	-	-
Sheet Size 60 x 96	-	-	-	-	-
72 x 96	-	-	-	-	-

Standard Sizes

Lengths: 96"

Widths: 48", 60", 72"

Tolerances

Width & Length, Standard: 0.000" (Min) - 0.625" (Max)

Width & Length, Non-standard 0.000" (Min) - 0.250" (Max)

Masking

Standard Masking Configurations

Gauges: 0.118" - 0.236", stock Makro Masking, Two (2) Sides

Gauges: 0.375" - 0.500", non-stock Makro Masking, Two (2) Sides

**Non-stock Item -
Contact your Customer Service Representative
for a quote**

Colors, Standard

0A00 - Clear (Gauges: All)

K09 - Bronze (2,000 lb Minimum)

H35 - Green, Transportation (2,000 lb Minimum)

I30 - Gray, Light (2,000 lb Minimum)

I35 - Gray, Dark (2,000 lb Minimum)

Custom

TUFFAK UV- 1 side (2,000 lb Minimum)

ABRASION-RESISTANT POLYCARBONATE SHEET

TUFFAK AR polycarbonate sheet is a one or both sides hard-coated polycarbonate product that adds higher abrasion resistance and surface hardness to polycarbonate's inherent performance benefits of impact strength and clarity. The proprietary hard-coat also provides chemical resistance and long lasting outdoor weathering performance. This product is available in clear, a range of standard tints, or can be custom matched to any color. TUFFAK AR polycarbonate sheet has a seven (7) year Limited Product Warranty against breakage, yellowing, and hazing. The terms of the warranty are available on request.

APPLICATIONS INCLUDE:

Flat architectural glazing, machine guards, and laminates



Packaging

- » Weight per Case: Varies per gauge
- » Weight per Pallet: 2,000 lbs.

Material

Material can be supplied as AR 1 side or AR 2 sides

Masking

Standard Masking Configurations

AR2 Gauges: 0.060" - 0.500", Green Paper Masking Two (2) Sides

AR1 Gauges: 0.060" - 0.500", Green Paper Masking One (1) Side, Clear on Other Side *Not a stock item

Case Packaging

Gauge	0.060	0.080	0.093	0.118	0.177	0.220	0.236	0.375	0.500
48 X 96	83	-	-	13	8	-	6	4	3
Sheet Size 60 x 96	-	-	-	-	-	-	6	4	3
72 x 96	-	-	-	-	-	-	6	-	-

Items listed above are common stock items, but not guaranteed to be in stock - Contact your Customer Service Representative to confirm stock availability

Standard Sizes

- Lengths: 96" (Gauges: 0.060" - 0.500")
- Widths: 48" (Gauges: 0.060")
- Widths: 48", 60", 72" (Gauges: 0.080" - 0.500")

Tolerances

- Width & Length, Standard: 0.000" (Min) - 0.625" (Max)
- Width & Length, Non-standard 0.000" (Min) - 0.250" (Max)

Colors, Standard AR 2-sided

- 0A00 - Clear (Gauges: All)
- K09 - Bronze (Gauges: 0.236") Standard, no stock
- H35 - Green, Transportation (Gauges: 0.118 - 0.500") Available in 0.236" as stock only
- I30 - Gray, Light (Gauges: 0.236", 0.500")
- I35 - 2.000 lb Minimum

TUFFAK[®]-AR-V

Flame Retardant

ABRASION RESISTANT / FLAME RETARDANT POLYCARBONATE SHEET

TUFFAK AR-V sheet is a one or both sides hard-coated polycarbonate product that adds higher abrasion resistance and surface hardness to polycarbonate's inherent performance benefits of impact strength and clarity. TUFFAK AR-V is a flame retardant grade with a UL 94 V-1 rating at 0.236" and at 0.358" and greater has a UL 94 V-0 rating. The proprietary hard-coat also provides chemical resistance and long lasting outdoor weathering performance. This product is available in clear, a range of standard tints, or can be custom matched to any color. TUFFAK AR-V sheet has a seven (7) year Limited Product Warranty against breakage, yellowing, and hazing. The terms of the warranty are available on request.

APPLICATIONS INCLUDE:

Flat architectural glazing, machine guards, and laminates



Packaging

- » Weight per Case: Varies per gauge
- » Weight per Pallet: 2,000 lbs.

Material

Custom, non-stock
Material can be supplied as AR 1 side or AR 2 sides

Masking

Standard Masking Configurations

- AR2 Gauges: 0.060" - 0.500", Green Paper Masking Two (2) Sides
- AR1 Gauges: 0.060" - 0.500", Green Paper Masking One (1) Side, Clear on Other Side *Not a stock item

Case Packaging

Gauge	0.060	0.080	0.093	0.118	0.177	0.220	0.236	0.375	0.500
48 X 96	83	-	-	13	8	-	6	4	3
Sheet Size 60 x 96	-	-	-	-	-	-	6	4	3
72 x 96	-	-	-	-	-	-	6	-	-

Items listed above are common stock items, but not guaranteed to be in stock - Contact your Customer Service Representative to confirm stock availability

Standard Sizes

Lengths: 96" (Gauges: 0.060" - 0.500")
Widths: 48" (Gauges: 0.060")
Widths: 48", 60", 72" (Gauges: 0.080" - 0.500")

Tolerances

Width & Length, Standard: 0.000" (Min) - 0.625" (Max)
Width & Length, Non-standard 0.000" (Min) - 0.250" (Max)

Colors, Standard AR 2-sided

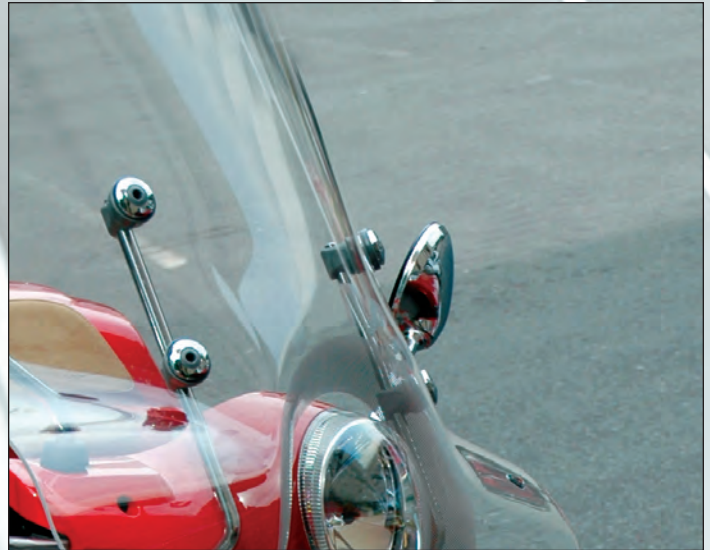
0A00 - Clear (Gauges: All)
K09 - Bronze (Gauges: .236") Standard, no stock
H35 - Green, Transportation (Gauges: 0.118 - 0.500")
I30 - Gray, Light (Gauges: 0.236", 0.500")
I35 - 2,000 lb Minimum

FORMABLE HARDCOAT POLYCARBONATE

TUFFAK FC is a transparent polycarbonate sheet that has a formable coating on both sides. This abrasion resistant product can be cold formed or drape formed and is suitable for exterior applications. TUFFAK FC has excellent resistance to damage from windborne debris and has outstanding impact strength. This product complies with ANSI Z26.1 Item AS-6 which covers transportation glazing applications.

APPLICATIONS INCLUDE:

Formed industrial applications, face shields, recreational vehicle windscreens



Packaging

» Custom, non-stock

Masking

Standard Masking Configurations

Gauges: 0.118" - 0.236", Adhesive Film Masking, Two (2) Sides

Case Packaging

	Gauge	0.118	0.156	0.177	0.236
Sheet Size	48 x 96	-	-	-	-

Standard Sizes

Lengths: 96"

Widths: 48"

Tolerances

Width & Length, Standard: 0.000" (Min) - 0.625" (Max)

Width & Length, Non-standard 0.000" (Min) - 0.250" (Max)

Colors, Standard

0A00 - Clear (Gauges: All)

Custom colors and sizes - Call for minimums and lead times

**Non-stock Item -
Contact your Customer Service Representative
for a quote**

TUFFAK®-15

Extended Abrasion Resistance

EXTENDED ABRASION AND UV RESISTANCE

TUFFAK 15 sheet is a polycarbonate product that offers excellent impact resistance in high risk areas, weathering life, and optical quality. It provides a clear aesthetic advantage over wire glass and metal screens for security glazing and approved for use under NYS-OMH patient safety standards for 0.375" and 0.500". TUFFAK 15 protects against vandalism, forced entry attempts or attacks, and accidental impacts to minimize the risk of theft and glass replacement in damage prone areas. Advanced manufacturing technology has resulted in high optical quality with minimal distortion in clear and standard glazing tints. The abrasion resistant coating, applied to both sides, provides up to twice the life of prior polycarbonate sheet products. TUFFAK 15 sheet has a fifteen (15) year Limited Product Warranty against breakage, yellowing, and loss of light transmission. The terms of the warranty are available upon request.

APPLICATIONS INCLUDE:

Educational, psychiatric and medical facilities, retail and government buildings, and transportation centers at risk from breakage and vandalism



Packaging

» Weight per Case: Varies per gauge

Masking

Standard Masking Configurations

Gauges: 0.236" - 0.500", White Paper Masking, Two (2) Sides

Case Packaging

Gauge	0.236	0.375	0.500
48 x 96	6	-	-
60 x 96	-	-	-
72 x 96	-	NA	NA

Items listed here are common stock items, but not guaranteed to be in stock - Contact your Customer Service Representative to confirm stock availability

Standard Sizes

Lengths: 96"

Widths: 48", 60", 72"

Tolerances

Width & Length, Standard: 0.000" (Min) - 0.625" (Max)

Width & Length, Non-standard: 0.000" (Min) - 0.250" (Max)

Colors, Standard AR 2-sided

0A00 - Clear (Gauges: All)

K09 - Bronze (Gauges: 0.236") Standard, no stock

H35 - Green, Transportation (Gauges: 0.118 - 0.500")

I30 - Gray, Light (Gauges: 0.236", 0.500")

I35 - 2,000 lb Minimum



CG375 Containment Grade

CONTAINMENT GRADE POLYCARBONATE

HYGARD CG375 containment grade sheet is a 0.375", 2-ply polycarbonate laminate that is tested to ASTM F 1915, ASTM F 1233, H.P. White TP 0500 for forced entry and EN ISO 23125 (C) for machine tools/turning machines. Unlike glass-clad products, this all-polycarbonate laminate resists spalling and white-out after repeated high force impacts, an advantage in maintaining visibility of a threat during an attack. All HYGARD products incorporate TUFFAK polycarbonate sheet produced for high optical quality in security glazing laminates. Exterior surfaces have a proprietary TUFFAK AR hardcoat that facilitates cleaning and resists marring, chemical attack, and graffiti. HYGARD CG375 sheet has a seven (7) year Limited Product Warranty against coating failure, delamination, yellowing, and hazing. The terms of the warranty are available upon request.

APPLICATIONS INCLUDE:

Jails, detention centers, psychiatric hospitals, reception areas, convenience stores, check cashing centers or facilities, turning machines



Packaging

» Weight per Case: Varies per gauge

Masking

Standard Masking Configurations

Gauges: All - Heavy High-tack PE Masking, two (2) sides

Case Packaging

Gauge	Sheet						
	38 x 78	38 x 96	48 x 60	48 x 72	48 x 96	60 X 72	60 x 96
CG375	1	-	-	1	1	-	-
CG500	-	1	-	1	1	-	1
CG750	-	1	-	-	1	-	-
BR750	1	1	1	1	1	1	1
BR1000	1	1	1	1	1	1	1
BR1250	1	1	1	1	1	1	1
MS1250					-		-

Items listed above are common stock items, but not guaranteed to be in stock - Contact your Customer Service Representative to confirm stock availability

Standard Sizes

See chart above.

MS1250, non-stock standard lead time. Call for quote.

Tolerances

Width & Length: 0.000" (Minimum) - 0.625" (Maximum)

Colors, Standard AR 2-sided

0A00 - Clear (Gauges: All)

I30 - Gray (1.000 lb Minimum)

K09 - Bronze (2.000 lb Minimum)

H35 - Green (2.000 lb Minimum)



CG500 Containment Grade

CONTAINMENT GRADE POLYCARBONATE

HYGARD CG500 containment grade sheet is a 0.500", 3-ply polycarbonate laminate that is tested to ASTM F 1233 Class 1.5 for contraband passage and Class 3.2 for body passage. HYGARD CG500 also tested to H.P. White TP 0500 Level A (.38 Special) and ASTM F1233, Class HG1 (.38 Special) for ballistics and EN ISO 23125 (C³) for machine tools/turning machines. Unlike glass-clad products, this all-polycarbonate laminate resists spalling and white-out after repeated high force and ballistic impacts, an advantage in maintaining visibility of a threat during an attack. All HYGARD products incorporate TUFFAK polycarbonate sheet produced for high optical quality in security glazing laminates. Exterior surfaces have a proprietary TUFFAK AR hardcoat that facilitates cleaning and resists marring, chemical, and graffiti attack. HYGARD CG500 sheet has a seven (7) year Limited Product Warranty against coating failure, delamination, yellowing, and hazing. The terms of the warranty are available upon request.



APPLICATIONS INCLUDE:

Jails, detention centers, psychiatric hospitals, reception areas, convenience stores, check cashing centers or facilities, turning machines



CG750 Containment Grade

CONTAINMENT GRADE POLYCARBONATE

HYGARD CG750 containment grade sheet is a 0.750" thick, 3-ply polycarbonate laminate that is tested to ASTM F 1233 Class 2.4, H.P. White TP 0500 Level B Ballistics (9 mm Luger) and EN ISO 23125 (C³) for machine tools/turning machines. Unlike glass-clad products, this all-polycarbonate laminate resists spalling and white-out after repeated high force and ballistic impacts, an advantage in maintaining visibility of a threat during an attack. All HYGARD products incorporate TUFFAK polycarbonate sheet produced for high optical quality in security glazing laminates. Exterior surfaces have a proprietary TUFFAK AR hardcoat that facilitates cleaning and resists marring, chemical attack, and graffiti. HYGARD CG750 sheet has a seven (7) year Limited Product Warranty against coating failure, delamination, yellowing, and hazing. The terms of the warranty are available upon request.



APPLICATIONS INCLUDE:

Security doors, windows, jails, detention centers, psychiatric hospitals, reception areas, convenience stores, check cashing centers or facilities, turning machines



BR750 Ballistic Grade

BALLISTIC GLAZING - LEVEL 1

HYGARD BR750 ballistic grade sheet is a 0.780", 3-ply polycarbonate and acrylic laminate that meets the UL 752 Level 1 rating for 9 mm ballistic attack. All HYGARD products incorporate TUFFAK polycarbonate sheet produced for high optical quality in security glazing laminates. Exterior surfaces have a proprietary TUFFAK AR hardcoat that facilitates cleaning and resists marring, chemical, and graffiti attack. HYGARD BR750 sheet has a seven (7) year Limited Product Warranty against coating failure, yellowing, and hazing. The terms of the warranty are available upon request.

APPLICATIONS INCLUDE:

Government and detention facilities, banks, specialty retailers, 24 hour convenience stores, cash transaction windows



BR1000 Ballistic Grade

BALLISTIC GLAZING - LEVEL 2

HYGARD BR1000 ballistic grade sheet is a 1.000", 4-ply polycarbonate laminate that meets the UL 752 Level 2 rating for .357 Magnum ballistic attack and HP White TP 0500 Level IV. Unlike glass-clad products, this all-polycarbonate laminate resists spalling and white-out after repeated high force and ballistic impacts, an advantage in maintaining visibility of a threat during an attack. All HYGARD products incorporate TUFFAK polycarbonate sheet produced for high optical quality in security glazing laminates. Exterior surfaces have a proprietary TUFFAK AR hardcoat that facilitates cleaning and resists marring, chemical attack, and graffiti. HYGARD BR1000 sheet has a seven (7) year Limited Product Warranty against coating failure, yellowing, and hazing. The terms of the warranty are available upon request.

APPLICATIONS INCLUDE:

Government and detention facilities, banks, specialty retailers, 24 hour convenience stores, cash transaction windows



HYGARD[®]
SECURITY LAMINATES

BR1250 Ballistic Grade

BALLISTIC GLAZING - LEVEL 3

HYGARD BR1250 ballistic grade sheet is a 1.250", 4-ply polycarbonate laminate that meets UL 752 Level 3 rating for .44 Magnum ballistic attack, HP White TP 0500 Level IV, and ASTM F 1233 Class 5. Unlike glass-clad products, this all-polycarbonate laminate resists spalling and white-out after repeated high force and ballistic impacts, an advantage in maintaining visibility of a threat during an attack. All HYGARD products incorporate TUFFAK polycarbonate sheet produced for high optical quality in security glazing laminates. Exterior surfaces have a proprietary TUFFAK AR hardcoat that facilitates cleaning and resists marring, chemical, and graffiti attack. Applications include security doors, windows, and other areas that require these specific levels of protection. HYGARD BR1250 sheet has a seven (7) year Limited Product Warranty against coating failure, yellowing, and hazing. The terms of the warranty are available upon request.

APPLICATIONS INCLUDE:

Government and detention facilities, banks, specialty retailers, 24 hour convenience stores, cash transaction windows



HYGARD[®]
SECURITY LAMINATES

MS1250 Ballistic Grade

MULTI SHOT PROTECTION

HYGARD MS1250 ballistic grade sheet is a 1.250", 4-ply acrylic and polycarbonate laminate that meets UL 752 Level 6 rating for high speed multi-shot 9 mm (Uzi) ballistic attack and supplementary shotgun rated using rifled lead slug or lead buckshot fired from a 12-gauge shotgun. All HYGARD products incorporate TUFFAK polycarbonate sheet produced for high optical quality in security glazing laminates. Exterior surfaces have a proprietary TUFFAK AR hardcoat that facilitates cleaning and resists marring, chemical, and graffiti attack. HYGARD MS1250 sheet has a seven (7) year Limited Product Warranty against coating failure, yellowing, and hazing. The terms of the warranty are available upon request.

APPLICATIONS INCLUDE:

Government and detention facilities, banks, specialty retailers, 24 hour convenience stores, cash transaction windows





Antimicrobial

ANTIMICROBIAL POLYCARBONATE SHEET

AMGARD clear polycarbonate sheet is formulated with silver ion antimicrobial technology that protects the sheet surface from microorganism growth and remains active for the entire life of the product. When used as protective barriers, AMGARD polycarbonate sheet provides a clear solid partition between individuals. It is easy to fabricate and form for a wide range of interior applications.

TUFFAK® AMGARD sheet is offered with a five (5) year Limited Product Warranty against breakage. The terms of the warranty are available upon request.

- » Inhibits microbe surface degradation
- » Independent laboratory tested
- » Half the weight of glass
- » Does not shatter into sharp-edged pieces like glass
- » Easy to fabricate & clean

APPLICATIONS INCLUDE:

Protective barriers, office partitions, safety enclosures, equipment housings



AMGARD is formulated with silver ion antimicrobial technology to protect the sheet's surface. It is not designed to prevent the transmission of any disease or infectious agent.

Packaging

- » Stock case packaging

Masking

Standard Masking Configurations

Gauges: .118" - 0.220", Stock Film Masking, Two (2) Sides

Full Pallet Packaging	
Gauge	0.220
Sheet Size	48 x 96
	45

Half Pallet Packaging	
Gauge	0.220
Sheet Size	48 x 96
	23

Items listed here are common stock items, but not guaranteed to be in stock – Contact your Customer Service Representative to confirm stock availability

Standard Sizes

Lengths: 96"
Widths: 48"

Tolerances

Width & Length, Standard: +0.000" (Min) - +0.250" (Max)
Width & Length, Non-standard 0.000" (Min) - 0.250" (Max)

Colors, Standard

0A00 - Clear



Scratch-Resistant Antimicrobial

SCRATCH-RESISTANT ANTIMICROBIAL

AMGARD scratch-resistant polycarbonate sheet is formulated with silver ion antimicrobial technology that protects the sheet surface from microorganism growth and remains active for the entire life of the product. The proprietary coating provides enhanced abrasion resistance to polycarbonate's inherent performance benefits of impact strength and clarity. The scratch-resistant coating also adds exceptional resistance to common disinfecting cleaning chemicals. The result is a highly durable and tough antimicrobial sheet that can stand up to today's demanding safety barrier environments.

TUFFAK® AMGARD-SR sheet is offered with a five (5) year Limited Product Warranty against breakage. The terms of the warranty are available upon request.

- » Inhibits microbe surface degradation
- » Independent laboratory tested
- » Abrasion resistant
- » Chemical resistant
- » Half the weight of glass
- » Virtually unbreakable
- » Easy to fabricate and clean



APPLICATIONS INCLUDE:

Durable protective barriers, office partitions, safety enclosures, interior windows and glazing

AMGARD SR is formulated with silver ion antimicrobial technology to protect the sheet's surface. It is not designed to prevent the transmission of any disease or infectious agent.

Packaging

- » Weight per pallet: 2,000 lbs.

Material

Material can be supplied as scratch resistant coated 1 or 2 sides

Masking

Standard Masking Configurations

All Gauges: 0.118" - 0.236", 3 mil Clear Film Masking

Pallet Packaging

Gauge	0.060	0.080	0.093	0.118	0.177	0.220	0.236
Sheet Size 48 x 96	-	-	-	85	60	45	45

Items listed here are common stock items, but not guaranteed to be in stock - Contact your Customer Service Representative to confirm stock availability

Standard Sizes

Lengths: 96"

Widths: 48"

Tolerances

Width & Length, Standard: 0.000" (Min) - 0.625" (Max)

Width & Length, Non-standard 0.000" (Min) - 0.250" (Max)

Colors, Standard

0A00 - Clear (Gauges: All)

MIRROR POLYCARBONATE SHEET

TUFFAK Mirror is a virtually unbreakable mirror product that improves safety and eliminates the hazards associated with broken glass. The high optical quality polycarbonate substrate provides clear mirror images and a first surface coating provides abrasion resistance and durable coating protects the mirrored second surface. The product is lightweight (half the weight of mirrored glass) and easy to fabricate and installation.

- » Virtually unbreakable
- » Approximately half the weight of glass mirror
- » Abrasion-resistant coating
- » Aircraft grade meets FAR 25.853(a) flammability

APPLICATIONS INCLUDE:

Jails, Gyms, Hospitals, Airplanes, Casinos



Standard Sizes

48" x 96"

Masking

Standard Masking Configurations

Gauges: 0.118" - 0.236", Paper

**Non-stock item -
Contact your Customer Service
Representative for a quote**

TUFFAK[®]-Lumen XT

LED Diffusing

LIGHT DIFFUSING POLYCARBONATE SHEET

TUFFAK Lumen XT sheet is a translucent polycarbonate product with a textured surface on one side specifically designed for lighting lenses. It features a unique combination of high light diffusion and high light transmission through a combination of optimized surface texture and advanced diffuser technologies.

When compared to other light diffusing products such as glass, TUFFAK Lumen XT sheet has superior impact strength and toughness. Its higher flammability resistance and wider service temperature range provide an additional performance advantage over acrylic diffusers.

The wide range of standard diffusion levels offers designers the flexibility to maximize light fixtures' aesthetics and performance. Other surface textures are available for additional design options.

APPLICATIONS INCLUDE:

Interior LED and conventional lighting fixtures

Packaging

» Weight per Case: Varies per gauge

Masking

Standard Masking Configurations

Makromask one-side, masked on the non-textured side

Case Packaging

Gauge	0.060	0.118
Sheet Size 48 x 96	26	13

Standard Sizes

Lengths: 96" (Gauges: 0.060" - 0.118")

Widths: 48" (Gauges: 0.060" - 0.118")

Tolerances

Width & Length, Standard: 0.000" (Min) - 0.625" (Max)

Width & Length, Non-standard 0.000" (Min) - 0.250" (Max)

Standard Diffusion Grades

LC0 - Light scattering (Gauges: All)

LC3 - Light scattering (Gauges: All)

LC5 - Light scattering (Gauges: All)

LC7 - Light scattering (Gauges: All)

LW3 - Light scattering (Gauges: All)

LW5 - Light scattering (Gauges: All)

LW7 - Light scattering (Gauges: All)

LW9 - Light scattering (Gauges: All but 0.118" which is non-stock)

**Items listed here are common stock items,
but not guaranteed to be in stock -
Contact your Customer Service Representative
to confirm stock availability**



LUMEN XT-V - ENHANCED FLAME RATING

TUFFAK Lumen XT-V is a translucent polycarbonate sheet with a textured surface on one side specifically designed for lighting lenses where enhanced flame rating is required, and at 0.118" meets Flame Class UL 94-V0, 5VA. Available in three diffusion levels, Lumen XT-V offers design flexibility and outstanding performance.

INTENDED APPLICATIONS:

Industrial luminaires, hazardous location lighting, transportation lenses, fixtures with NEC Class I Circuits

Packaging

» Custom, non-stock

Masking

Standard Masking Configurations

Makromask one-side, masked on the non-textured side

Case Packaging

Gauge	0.118
Sheet Size 48 x 96	-

Standard Sizes

Lengths: 96" (Gauges: 0.118")

Widths: 48" (Gauges: 0.118")

Tolerances

Width & Length, Standard: 0.000" (Min) - 0.625" (Max)

Width & Length, Non-standard 0.000" (Min) - 0.250" (Max)

Standard Diffusion Grades

LC3 - Light scattering (Gauges: All)

LC5 - Light scattering (Gauges: All)

LC7 - Light scattering (Gauges: All)

OUTDOOR LED LIGHTING POLYCARBONATE

TUFFAK DX-NR is a translucent polycarbonate product specifically designed for use as a lighting lens in outdoor applications. The diffuser technology helps to provide uniform luminance and ensures elimination of LED hot spots while maintaining high light transmission. The advanced UV resistance technology provides long lasting weathering performance and the non-reflective texture built into the UV resistant side of the sheet, enhances its aesthetics.

When compared to other light diffusing products such as glass, TUFFAK DX-NR has superior impact strength and toughness. Its higher flammability resistance and wider service temperature provide an additional advantage over other diffusers.



Packaging

» Weight per Case: Varies per gauge

Masking

Standard Masking Configurations

High Tack on NR textures side and Tuff Mask on smooth side

Case Packaging			
Gauge		0.060	0.118
Sheet Size	48 x 96	-	-

**Non-stock Item -
Contact your Customer Service Representative
for a quote**

Standard Sizes

Lengths: 96" (Gauges: 0.060" or 0.118")

Widths: 48" (Gauges: 0.060" or 0.118")

Tolerances

Width & Length, Standard: 0.000" (Min) - 0.625" (Max)

Standard Diffusion Grades

DC8 with Non-Reflective (NR) texture

TUFFAK[®]-NR / -NR-C

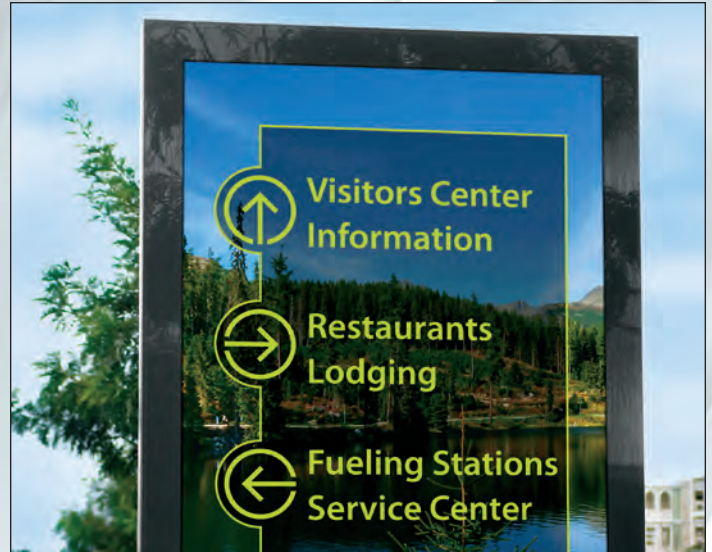
Non-Reflective

NON-REFLECTIVE POLYCARBONATE SHEET

TUFFAK NR is an enhanced UV resistant polycarbonate sheet product with a proprietary matte surface which reduces reflections typically associated with smooth sheet. The product's advanced UV resistance technology promotes long lasting outdoor weathering performance. It features outstanding impact strength, superior dimensional stability and high temperature resistance. This lightweight sheet is also easy to fabricate and decorate

APPLICATIONS INCLUDE:

Display and screen protectors, signage, lenses, menu boards, and other applications requiring a non-reflective surface for improved viewing with reduced glare



Packaging

» Weight per Case:
Varies per gauge

Masking

Standard Masking Configurations
Protective masking two sides

Pallet Packaging

Gauge		0.060	0.118	0.177
Sheet Size	48 x 96	26	-	-
	80.7 x 120	-	13	-

Standard Sizes

Lengths: 96" (Gauges: 0.060" or 0.177")

Widths: 48" (Gauges: 0.060" or 0.177")

Tolerances

Width & Length, Standard: 0.000" (Min) - 0.250" (Max)

Colors, Standard

OA00 - Clear

Items listed here are common stock items, but not guaranteed to be in stock - Contact your Customer Service Representative to confirm stock availability

NON-REFLECTIVE HARD-COAT POLYCARBONATE

TUFFAK NR-C sheet is an enhanced UV resistant, non-reflective, one side hard-coated polycarbonate sheet product with a textured hard coat surface which reduces glare normally associated with flat sheet. This hard coating also adds abrasion and chemical resistance to polycarbonate's inherent performance benefits of high impact strength and dimensional stability.

APPLICATIONS INCLUDE:

Display and screen protectors, fuel dispensing systems, signage, lenses, menu boards and other applications requiring a non-reflective surface for improved viewing with reduced glare combined with improved mar and chemical resistance

Packaging

» Weight per Case:
Varies per gauge

Masking

Standard Masking Configurations
Protective masking two sides

Pallet Packaging

Gauge		0.060	0.080	0.118
Sheet Size	48 x 96	26	20	13
	80.7 x 120	-	-	-

Standard Sizes

Lengths: 96" (Gauges: 0.060" or 0.177")

Widths: 48" (Gauges: 0.060" or 0.177")

Tolerances

Width & Length, Standard: 0.000" (Min) - 0.250" (Max)

Colors, Standard

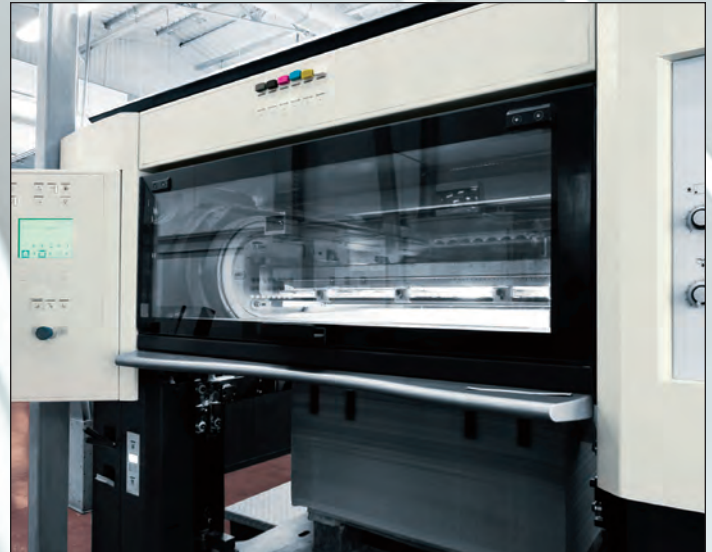
OA00 - Clear

WINDOW GRADE POLYCARBONATE SHEET

TUFFAK WG polycarbonate engineering plate is a UV-stabilized, amorphous sheet. It offers extremely high impact strength, high modulus of elasticity, outstanding dimensional stability, and good mechanical and electrical properties. TUFFAK WG demonstrates low levels of black specks or other impurities.

APPLICATIONS INCLUDE:

Sight windows for tanks/vessels, viewport windows, medical parts, military applications



Packaging

» Custom, non-stock, 1 sheet minimum

Masking

Standard Masking Configurations
Paper Masking, Both Sides

Case Packaging

Gauge	0.750	1.000	1.250	1.500	1.750	2.000
Sheet Size 24 x 24	-	-	-	-	-	-
Sheet Size 24 x 48	-	-	-	-	-	-
Sheet Size 48 x 48	-	-	-	-	-	-
Sheet Size 48 x 96	-	-	-	-	-	-

Non-stock Item -
Contact your Customer Service Representative for a quote

Standard Sizes

Lengths: 24", 48", 96" (Gauges: 0.750" - 2.000")

Widths: 24", 48" (Gauges: 0.750" - 2.000")

Tolerances

Width & Length - Plus tolerance only

Colors, Standard

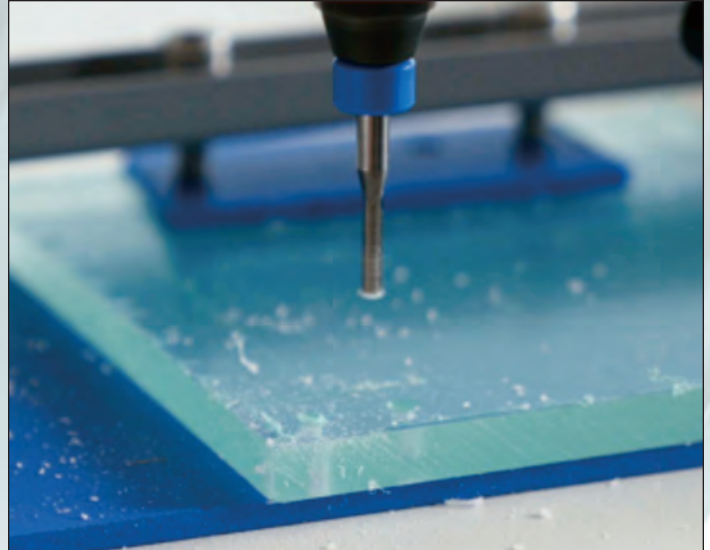
0A00 - Transparent

MACHINE GRADE POLYCARBONATE SHEET

TUFFAK MG machine grade polycarbonate is a low stress engineering plastic designed for heavily fabricated, tight tolerance parts. It features extremely high impact strength, high modulus of elasticity, outstanding dimensional stability, and good electrical properties. TUFFAK MG is available in clear and black and is textured on both sides.

APPLICATIONS INCLUDE:

Machined parts, manifolds, insulators, and electrical components



Packaging

» Weight per Case: Varies per gauge

Masking

Standard Masking Configurations
Material is supplied unmasked

Case Packaging

Gauge	0.750	1.000	1.250	1.500	1.750	2.000
Sheet Size 48 x 96	1	1	-	-	-	-

Items listed above are common stock items, but not guaranteed to be in stock - Contact your Customer Service Representative to confirm stock availability

Standard Sizes

Lengths: 96" (Gauges: 0.750" - 2.000")
Widths: 48" (Gauges: 0.750" - 2.000")

Tolerances

Width & Length - Plus tolerance only

Colors, Standard

0A00 - Translucent
L10 - Black, non-stock

Grades Available

UV-stabilized, Standard

ULTRA CLEAR POLYCARBONATE SHEET

TUFFAK UC sheet is a polycarbonate product exhibiting unsurpassed visible light transmission versus other polycarbonate sheet products. This high clarity sheet is specifically designed for use in multilayer laminates.

APPLICATIONS INCLUDE:

Specialty laminates



Packaging

» Custom, non-stock

Masking

Standard Masking Configurations

Gauges: 0.118" - 0.500", Makro Mask Two (2) Sides

Pallet Packaging

Gauge	0.118	0.177	0.236	0.375	0.500
Sheet Size 48 x 96	-	-	-	-	-
Sheet Size 60 x 96	-	-	-	-	-
Sheet Size 72 x 96	-	-	-	-	-

Non-stock Item -

Contact your Customer Service Representative for a quote

Standard Sizes

Lengths: 96" (Gauges: 0.118" - 0.500")

Widths: 48", 60", 72" (Gauges: 0.118" - 0.500")

Tolerances

Width & Length, Standard: 0.000" (Min) - 0.625" (Max)

Width & Length, Non-standard: 0.000" (Min) - 0.250" (Max)

Colors, Standard

0A00 - Clear

ABRASION RESISTANT / ULTRA CLEAR POLYCARBONATE SHEET

TUFFAK AU sheet is a one side, hard coated polycarbonate product exhibiting unsurpassed visible light transmission versus other polycarbonate sheet products. This high clarity sheet is specifically designed for use in multilayer laminates. The advanced hard coat technology significantly enhances the abrasion resistance, chemical resistance, and weathering properties of the product while maintaining the excellent impact performance of TUFFAK polycarbonate.

APPLICATIONS INCLUDE:

Specialty laminates



Packaging

» Custom, non-stock

Masking

Standard Masking Configurations

Gauges: 0.118" - 0.500", Printed Paper Masking - Coated side
Hi-tack PE - Uncoated side

Pallet Packaging

Gauge	0.118	0.177	0.236	0.375	0.500
Sheet Size 48 x 96	-	-	-	-	-
Sheet Size 60 x 96	-	-	-	-	-
Sheet Size 72 x 96	-	-	-	-	-

Non-stock Item -

Contact your Customer Service Representative for a quote

Standard Sizes

Lengths: 96" (Gauges: 0.118" - 0.500")

Widths: 48", 60", 72" (Gauges: 0.118" - 0.500")

Tolerances

Width & Length, Standard: 0.000" (Min) - 0.625" (Max)

Width & Length, Non-standard: 0.000" (Min) - 0.250" (Max)

Colors, Standard

OA00 - Clear

BUS GLAZING POLYCARBONATE SHEET

TUFFAK BG sheet is a hard-coated polycarbonate product designed for exceptional durability. Manufactured to meet demanding bus glazing requirements, this product features abrasion resistance, chemical resistance, and long lasting outdoor weathering performance. The high impact strength of this product provides excellent protection against vandalism, reducing unplanned maintenance and repair. TUFFAK BG meets DOT/FMVSS 205/ANSI Z26.1 Item AS-4 and is available in clear as well as a variety of standard and custom tints.

APPLICATIONS INCLUDE:

Bus windows



Packaging

» Custom, non-stock

Masking

Standard Masking Configurations

Gauges: 0.236" - 0.500", Stock Paper Masking Two (2) Sides

Half Pallet Packaging			
Gauge	0.236	0.375	0.500
48 x 96	-	-	-
Sheet Size 60 x 96	-	-	-
72 x 96	-	-	-

Standard Sizes

Lengths: 96"

Widths: 48", 60", 72"

Tolerances

Width & Length: 0.000" (Min) - 0.625" (Max)

Colors, Standard

A00 - Clear (Gauges: All)

I30 - Gray, Light

Custom colors available upon approved color match

**Non-stock Item -
Contact your Customer Service Representative
for a quote**

RAIL GLAZING POLYCARBONATE SHEET

TUFFAK TG sheet is a hard-coated polycarbonate product designed for high optical quality and exceptional durability. The sheet is available in monolithic 0.236" and 0.250" and when used as part of a Dual Glazed system, meets stringent U.S Federal Railroad requirements for impact, ballistic and flammability performance. TUFFAK TG 0.460" meets the FRA requirement as a monolithic product. State-of-the-art manufacturing and inspection processes provide low optical distortion and the advanced hard coat technology provides excellent abrasion resistance, chemical resistance, and long lasting outdoor weathering performance. This product is available in clear and a variety of standard and custom tints. TUFFAK TG is offered with a seven (7) year Limited Product Warranty against breakage for flat vertical applications. The terms of the warranty are available upon request.

APPLICATIONS INCLUDE:

Passenger rail car windows and other transportation glazing



Packaging

» Custom, non-stock

Masking

Standard Masking Configurations

Gauges: 0.236" - 0.500", Stock Paper Masking Two (2) Sides

Half Pallet Packaging				
Gauge		0.236	0.375	0.500
Sheet Size	48 x 96	-	-	-
	60 x 96	-	-	-
	72 x 96	-	-	-

Standard Sizes

Lengths: 96"

Widths: 48", 60", 72"

Tolerances

Width & Length: 0.000" (Min) - 0.625" (Max)

Colors, Standard

A00 - Clear (Gauges: All)

I30 - Gray, Light

Custom colors available upon approved color match

**Non-stock Item -
Contact your Customer Service Representative
for a quote**

BUS DRIVER GUARD POLYCARBONATE SHEET

TUFFAK DG sheet is a hard-coated polycarbonate product designed for high optical quality and exceptional durability. The sheet is available in 0.236" and 0.375" inches thick with a specified direction of extrusion for proper installation. Manufactured to meet demanding bus glazing requirements, this product features abrasion resistance, chemical resistance, and long lasting performance. The high impact strength of this product provides excellent protection against vandalism and can help reduce driver assaults. The clarity of the glazing enables drivers to interact freely with passengers, while maintaining a high level of protection.

TUFFAK DG meets DOT/FMVSS 205/ANSI Z26.1 Item AS-4, and is NHTSA approved for use as a protective driver partition. The product carries a seven (7) year Limited Product Warranty against breakage for flat vertical applications. The terms of the warranty are available upon request.

APPLICATIONS INCLUDE:

Safety shielding for mass transit bus fleets



Packaging

» Stock half-pallet packaging

Masking

Standard Masking Configurations

Gauges: 0.236" - 0.375", Stock Film Masking Two (2) Sides

Half Pallet Packaging

Gauge	0.236	0.375
Sheet Size 72 x 96	15	9

Items listed here are common stock items, but not guaranteed to be in stock - Contact your Customer Service Representative to confirm stock availability

Standard Sizes

Lengths: 72"

Widths: 96"

Tolerances

Width & Length: 0.000" (Min) - 0.250" (Max)

Colors, Standard

A00 - Clear (Gauges: All)



Heavy Equipment Glazing

HEAVY EQUIPMENT GLAZING POLYCARBONATE

TUFFAK HV sheet is a hard-coated polycarbonate product designed for applications that demand high optics, impact resistance, and enhanced weathering. State-of-the-art manufacturing and inspection processes deliver low optical distortion and the advanced hard coat technology provides excellent abrasion resistance, chemical resistance, and long lasting outdoor weathering performance. TUFFAK HV is available in clear as well as a variety of standard and custom tints.

APPLICATIONS INCLUDE:

Off-road, specialty and heavy duty vehicle glazing



Packaging

» Custom, non-stock

Masking

Standard Masking Configurations

Gauges: 0.236" - 0.500", Stock Paper Masking Two (2) Sides

Tolerances

Width & Length, Standard: 0.000" (Min) - 0.625" (Max)

Width & Length, Non-standard: 0.000" (Min) - 0.250" (Max)

Colors, Standard

0A00 - Clear (Gauges: All)

H35 - Green, transportation

I30 - Gray, Light

Custom colors - available upon approved match

**Non-stock Item -
Contact your Customer Service Representative
for a quote**

EXTENDED WEATHERABILITY TRANSPORTATION GLAZING POLYCARBONATE

TUFFAK TX sheet is a hard-coated polycarbonate product designed to meet demanding transportation glazing applications. The sheet provides high impact performance at half the weight of the glass. The advanced hard coat technology provides extended outdoor weathering properties and significantly enhances abrasion and chemical resistance. TUFFAK TX meets DOT/ANSI Z26.1 Item AS-4 and is available in clear, as well as a variety of standard and custom tints.

APPLICATIONS INCLUDE:

Truck cabs, side and back windows, automotive roofs, and other transportation glazing



Packaging

» Custom, non-stock

Masking

Standard Masking Configurations

Gauges: 0.236" - 0.375", White Paper Masking Two (2) Sides

Case Packaging		
Gauge	0.236	0.375
48 x 96	-	-
Sheet Size 60 x 96	-	-
72 x 96	-	-

**Non-stock Item -
Contact your Customer Service Representative
for a quote**

Standard Sizes

Lengths: 96"

Widths: 48", 60", 72"

Tolerances

Width & Length, Standard: 0.000" (Min) - 0.625" (Max)

Width & Length, Non-standard: 0.000" (Min) - 0.250" (Max)

Colors, Standard

0A00 - Clear (Gauges: All)

H35 - Green, Transportation (2,000 lb Minimum)

I30 - Gray, Light (2,000 lb Minimum)

AUTOMOTIVE LAMINATION POLYCARBONATE

TUFFAK AL sheet is a one side hard coated polycarbonate product designed to meet the high optical quality requirements of automotive laminates. State-of-the-art manufacturing and inspection processes ensure minimal inclusions and surface defects. The advanced hard coat technology significantly enhances the abrasion resistance, chemical resistance, and weathering properties of the product while maintaining the excellent impact performance of TUFFAK polycarbonate.

APPLICATIONS INCLUDE:

Automotive laminates



Packaging

» Weight per Case

Masking

Standard Masking Configurations

White Adhesive Film Masking Coated Side,

Clear Adhesive Film Uncoated Side

Case Packaging

		Gauge	0.118
Sheet Size	48 x 96	-	
	72 x 120	-	
	78.75 x 115	23	

Call for minimums and lead time

Colors, Standard

0A00 - Clear (Gauges: All)

TUFFAK[®]-SQ

Specified Quality

SPECIFIED QUALITY POLYCARBONATE SHEET

TUFFAK SQ sheet is a polished surface, UV stabilized, transparent polycarbonate product. Targeted optical quality is achieved through state-of-the-art extrusion and inspection processes. Quality limits for distortion, inclusions, and surface defects are set for each customer to meet their specific application requirements.

APPLICATIONS INCLUDE:

Optically critical end uses



**Non-stock Item -
Contact your Customer Service Representative
for a quote**

TUFFAK[®]-AF

Anti-Fog

ANTI-FOG POLYCARBONATE SHEET

TUFFAK AF polycarbonate sheet is a two-side coated product that provides long lasting anti-fog properties in addition to the inherent polycarbonate performance benefits of impact strength and clarity. The proprietary coating also provides abrasion resistance and enhanced chemical resistance. This optically clear sheet will retain its anti-fog properties even after repeated cleanings with commercial glass and lens cleaners. The product is available in clear or a range of standard tints. TUFFAK AF polycarbonate sheet has a five (5) year Limited Product Warranty against breakage. The terms of the warranty are available on request.

APPLICATIONS INCLUDE:

Personal protection safety shields, ski goggles, swim goggles, underwater photography equipment, face shields, industrial safety shields and firefighter helmets



**Non-stock Item -
Contact your Customer Service Representative
for a quote**

TUFFAK[®]-IR

Infrared Blocker

IR/UV BLOCKING POLYCARBONATE SHEET

TUFFAK IR is a polycarbonate sheet product developed to meet ANSI Z87.1, EN 169, and CSA Z94.3 standards for face shield applications. Proprietary additive systems block UV and IR light providing protection during gas flame welding and cutting operations and meeting the requirements for welding shades 3 and 5. Polycarbonate's toughness provides outstanding impact performance and state-of-the-art extrusion manufacturing delivers high optical quality needed for face shield applications.

APPLICATIONS INCLUDE:

Face shields for flame welding and cutting and general IR protection



Packaging

» Weight per Half Pallet: 1,000 lbs.

Half Pallet Packaging

Gauge	0.044	
Sheet Size	24 x 48	-
	48 x 96	125

Standard Sizes

Lengths: 24" and 96"

Widths: 48"

Tolerances

Width & Length, Standard: 0.000" (Min) - 0.625" (Max)

Width & Length, Non-standard: 0.000" (Min) - 0.250" (Max)

Masking

Standard Masking Configurations

Gauges: .0.044", Clear Joggable Polyethylene, Two (2) Sides.

Additional Masking Available for this Product- Call for quote

**Items listed here are common stock items,
but not guaranteed to be in stock -
Contact your Customer Service
Representative to confirm stock availability**

Colors, Standard

S34 - Shade 3 at 0.044"

S54 - Shade 5 at 0.044"

TUFFAK[®]-M5

Flexible Marine Enclosure

FLEXIBLE ENCLOSURE POLYCARBONATE

TUFFAK Marine 5 sheet is a polycarbonate product designed for applications demanding high optical clarity, exceptional durability, and longevity against the harsh marine environment. State-of-the-art manufacturing processes provide low optical distortion for clear views and unparalleled sight lines. The advanced hard coat technology provides excellent abrasion resistance, enhanced clarity, chemical resistance, and long lasting outdoor weathering performance. TUFFAK Marine 5 maintains its impact strength in extreme temperatures to -30°F. TUFFAK Marine 5 can be easily cut and sewn, making this a more versatile option versus glazing materials that require gluing.

TUFFAK Marine 5 is offered with a five (5) year Limited Product Warranty against micro-cracking, yellowing, and breakage. The terms of the warranty are available upon request.

APPLICATIONS INCLUDE:

Marine flexible enclosures



Packaging

» Case Packs – approximately 300 lbs.

Masking

Standard Masking Configurations

Printed “AR” Makromask / Printed “AR” Makromask

Case Packaging

		0.060	0.080
Gauge			
Sheet Size	50 x 110	26	-
	60 x 110	-	20

Items listed here are common stock items, but not guaranteed to be in stock - Contact your Customer Service Representative to confirm stock availability

Standard Sizes

Lengths: 110”

Widths: 50” in 0.060” and 60” in 0.080”

Colors, Standard

A00 - Clear

TUFFAK®-VR

Flexible Enclosure

FLEXIBLE ENCLOSURE POLYCARBONATE

TUFFAK VR sheet is a polycarbonate product designed for high optical quality and exceptional durability. Proprietary UV technology ensures long lasting outdoor weathering performance while protecting occupants from the sun's harmful UV rays. State-of-the-art manufacturing processes provide low optical distortion for clear views and unparalleled sight lines.

TUFFAK VR can be easily cut and sewn, offering a high clarity, wrinkle-free alternative to flexible vinyl. The product can be rolled, making it ideal for applications with limited storage. TUFFAK VR maintains its impact strength in extreme temperatures to -30°F.

TUFFAK VR is offered with a five (5) year Limited Product Warranty against breakage. The terms of the warranty are available upon request.

APPLICATIONS INCLUDE:

Marine flexible enclosures, tent and awning enclosures



Packaging

» Case Packs – approximately 300 lbs.

Masking

Standard Masking Configurations
Printed Makromask / Plain Makromask

Case Packaging

Gauge	0.040	
Sheet Size	52 x 110	37

Items listed here are common stock items, but not guaranteed to be in stock – Contact your Customer Service Representative to confirm stock availability

Standard Sizes

Lengths: 110"
Widths: 52"

Colors, Standard

A00 - Clear
PI-053

WELDING CURTAIN POLYCARBONATE SHEET

TUFFAK WC sheet is a polished surface, transparent polycarbonate sheet product designed for welding curtain and screen applications. The sheet can also be used in applications requiring UV light blocking such as screens in tanning salons and intense sunlit areas. It features outstanding impact strength, superior dimensional stability, high temperature resistance, high clarity and it is light weight and easy to fabricate. The sheet protects individuals against intense and harmful light emitted during arc welding. TUFFAK WC polycarbonate sheet is offered with a five (5) year Limited Product Warranty against breakage. The terms of the warranty are available upon request.

APPLICATIONS INCLUDE:

Welding curtains, screens, booths, enclosures and walkways, tanning salon screens and other extreme UV or visible light areas

Regulatory code compliance and certifications

AWS F2.3M:2011 Specification for Use and Performance of Transparent Welding Curtains and Screens for light transmission properties.



Packaging

- » Weight per Case: 300 lbs.
- » Weight per Pallet: 2,000 lbs.

Masking

Standard Masking Configurations

Makro Mask, Two (2) Sides.

Additional masking options available – price per side

Case Packaging				
Gauge		0.118	0.177	0.236
Sheet Size	48 x 96	13	-	-

Items listed here are common stock items, but not guaranteed to be in stock – Contact your Customer Service Representative to confirm stock availability

Standard Sizes

Lengths: 96"

Widths: 48"

Tolerances

Width & Length, Non-standard: 0.000" (Min) - 0.250" (Max)

Colors, Standard

Light Shade

M62 – Yellow (Gauges 0.118", 0.236")

Medium Shade

D59 – Red (Gauges, 0.118", 0.236")

C30 – Amber (Gauges, 0.118", 0.236")

Dark Shade

H07 – Dark Green (Gauge 0.118", 0.236")

LASER SAFETY POLYCARBONATE SHEET

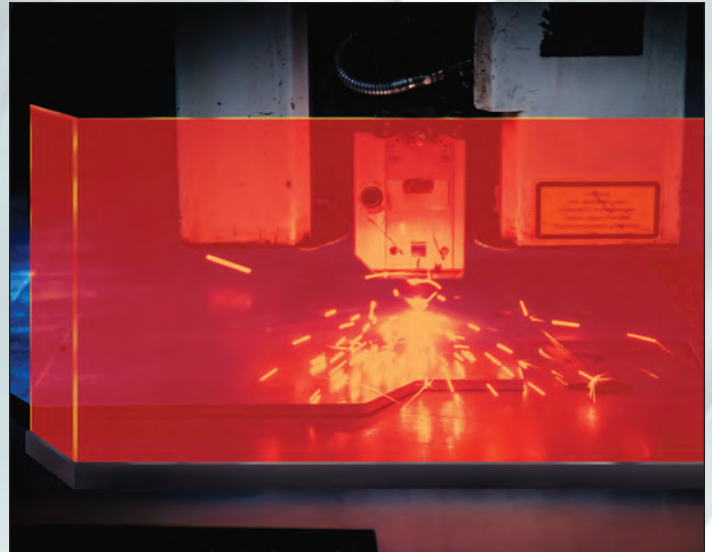
TUFFAK LS sheet is a tinted, transparent polycarbonate sheet designed with high optical density at targeted wavelengths for laser shielding applications. It features outstanding impact strength, superior dimensional stability, high temperature resistance, high optical density and high clarity. This lightweight sheet is also easy to fabricate. TUFFAK LS sheet is offered with a five (5) year Limited Product Warranty against breakage. The terms of the warranty are available upon request.

APPLICATIONS INCLUDE:

Laboratory viewing windows, area protective barriers, laser viewing table enclosures, laser viewing ports, safety screens or beam blocking curtains for medical applications, safety screens in laser cutting operations and laser research

Regulatory code compliance and certifications

ANSI Z136.7 Appendix C - Procedure for Laser Based Testing of Optical Density for Absorptive Filters.
American National Standard for Laser Protective Equipment



Packaging

- » Weight per Case: Varies per gauge.
- » Weight per Pallet: 2,000 lbs.
- » Weight per Half Pallet: 1,000 lbs.

Masking

Standard Masking Configurations
Gauges: 0.118" TUF Mask, Two (2) Sides

Packaging		
Gauge		0.118
Sheet Size	24 x 48	1
	48 x 96	1

Items listed here are common stock items, but not guaranteed to be in stock - Contact your Customer Service Representative to confirm stock availability

Standard Sizes

- 24" x 48" (Gauges: 0.118")
- 48" x 96" (Gauges: 0.118")

Tolerances

- Width: 0.000" (Min) - 0.250" (Max)
- Length: 0.000" (Min) - 0.250" (Max)

Colors, Standard

- LSG Gray, Light (Gauges: 0.118")
- LSY Yellow (Gauges: 0.118")
- LSA Amber (Gauges: 0.118")

CLASS A PERFORMANCE POLYCARBONATE

TUFFAK CA is an optical grade transparent polycarbonate sheet product designed to meet Class A flammability requirements in the International Building Code (IBC) for interior wall and ceiling finishes. It features outstanding impact strength, high temperature resistance and high clarity and passes the National Fire Protection Association (NFPA) 286 flammability requirements. This UV stable, lightweight, thermoformable, and easy to fabricate sheet is available in smooth and patterns; clear and colors. TUFFAK CA sheet is offered with a five (5) year Limited Product Warranty against breakage. The terms of the warranty are available upon request.

APPLICATIONS INCLUDE:

Class A rated wall and ceiling finishes, coverings, decorative panels, protective coverings, partitions, interior windows, safety barriers, lighting diffusers and interior signage



Packaging

- » Custom orders, non-stock
- » Weight per Pallet: 2,000 lbs.

Masking

Standard Masking Configurations

Gauges: 0.118" - 0.236", Tuf Mask, Two (2) Sides

Gauges: 0.375" - 0.500", Paper Masking, Two (2) Sides

Packaging						
Gauge		0.118	0.177	0.236	0.375	0.500
Sheet Size	48 x 96	-	-	-	-	-
	60 x 96	85	-	45	-	-
	72 x 96	-	-	-	-	-

Non-stock Item -

Contact your Customer Service Representative for a quote

Standard Sizes

Lengths: 48", 96"

Widths: 48", 60", 72"

Tolerances

Width & Length, Non-standard: 0.000" (Min) - 0.250" (Max)

Colors, Standard

0A00 - Clear

K09 - Bronze

I30 - Gray, Light

I35 - Gray, Dark

Textures, Available 48" x 96" only

MA - Matte 0.118"

80/90 - Pebble/Grain 0.236"

Prismatic 0.125" 0.156" 0.187"

SA - Satin

*Call for custom color minimums

TUFFAK®-CA-UV

Class A / UV

CLASS A - EXTENDED UV PERFORMANCE POLYCARBONATE SHEET

TUFFAK CA-UV is an optical grade transparent polycarbonate sheet product with extended UV resistance, designed to meet Class A flammability requirements in the International Building Code (IBC) for outdoor architectural applications. It features outstanding impact strength, high temperature resistance, high clarity and passes the National Fire Protection Association (NFPA) 286 flammability requirements. This easy to fabricate 2-sided UV resistant sheet is lightweight, thermoformable and available in clear and standard tints and diffusing colors.

TUFFAK CA-UV clear sheet has a ten (10) year Limited Product Warranty against breakage, yellowing, and loss of light transmission. The terms of the warranty are available upon request.

APPLICATIONS INCLUDE:

Outdoor canopies, pedestrian walkways, bus shelters, greenhouses, barrel vaults



Packaging

- » Custom orders, non-stock
- » Weight per Half Pallet: 2,000 lbs.

Masking

Standard Masking Configurations

Gauges: 0.118" - 0.236", Tuf Mask, Two (2) Sides

Gauges: 0.375", Paper Masking, Two (2) Sides

Packaging

Gauge	0.118	0.177	0.236	0.375
48 x 96	-	-	-	-
Sheet Size 60 x 96	-	-	-	-
72 x 96	-	-	-	-

Non-stock Item -

Contact your Customer Service Representative for a quote

Standard Sizes

Lengths: 48", 96"

Widths: 48", 60", 72"

Tolerances

Width: 0.000" (Min) - 0.250" (Max)

Length: 0.000" (Min) - 0.250" (Max)

Colors, Standard

0A00 - Clear (Gauges: 0.118" - 0.375")

K09 - Bronze (Gauges 0.118" - 0.375")

I30 - Gray, Light (Gauges 0.118" - 0.375")

I35 - Gray, Dark (Gauges 0.118" - 0.236")

TUFFAK®-CA-AR

Class A / Hard Coat

CLASS A - HARD-COATED POLYCARBONATE

TUFFAK CA-AR polycarbonate sheet is a one or two side hard-coated polycarbonate product that is designed to meet Class A flammability requirements within the International Building Code (IBC) for indoor and outdoor applications. The coating adds a higher abrasion resistance and surface hardness to polycarbonate's inherent performance benefits of impact strength and clarity. The proprietary hard-coat also provides chemical resistance and long lasting outdoor weathering performance. This product is available in clear sheet and a range of standard architectural tints.

TUFFAK CA-AR polycarbonate sheet has a seven (7) year Limited Product Warranty against breakage, yellowing, and hazing. The terms of the warranty are available on request.

APPLICATIONS INCLUDE:

Flat architectural applications requiring Class A flammability performance such as interior and exterior windows, pedestrian walkways, canopies, bus shelters, greenhouses, protective wall cladding, partitions and safety barriers



Packaging

- » Custom orders, non-stock
- » Weight per Pallet: 2,000 lbs.

Packaging		
Gauge	0.118	0.236
Sheet Size 48 x 96	-	-
Sheet Size 60 x 96	-	-
Sheet Size 72 x 96	-	-

Standard Sizes

Lengths: 96"
Widths: 48", 60", 72"

Tolerances

Width & Length, Non-standard: 0.000" (Min) - 0.250" (Max)

Masking

Standard Masking Configurations

Gauges: 0.118" - 0.236" CA-AR2, White Printed Film Masking, Two (2) Sides

Gauges: 0.118" - 0.236", CA-AR1 White Printed Film Masking, One (1) Side; Clear Masking opposite side

**Non-stock Item -
Contact your Customer Service Representative
for a quote**

Colors, Standard

- 0A00 - Clear
- K09 - Bronze
- I30 - Gray, Light
- I35 - Gray, Dark

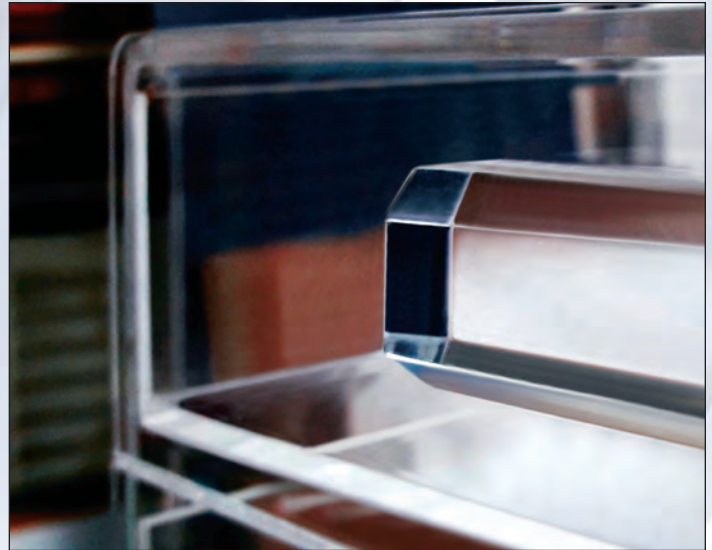
*Call for custom color minimums

CONTINUOUS CAST CLEAR ACRYLIC SHEET

OPTIX L continuous cast acrylic sheet has the highest clarity. It is easy to fabricate and form for many applications for interior and exterior applications with exceptional UV stability. It has superior thickness tolerance compared to cell cast sheets. OPTIX L is easy to clean and offers superior craze and chemical resistance. It is available in gauge range of 0.080" - 0.315". Custom gauged and sheet sizes are available.

APPLICATIONS INCLUDE:

Furniture, cosmetic displays, interior partitions, signage



Packaging

- » Weight per case: Varies per gauge
- » Weight per pallet: 2,000 lbs.

Masking

Standard Masking Configurations

- F2 Masking Two (2) Sides Clear Polyfilm
- X2, TufGuard Masking Two (2) sides

		Case Packaging						
Gauge		0.080	0.098	0.118	0.177	0.220	0.236	0.315
Sheet Size	48 x 96	-	100	80	55	45	40	35
	49 x 97	125	-	-	-	-	-	-
	51 x 100	-	80	-	-	-	-	-
	54 x 100	-	70	-	-	-	-	-
	60 x 96	-	-	75	50	45	45	-
	72 x 96	-	-	65	45	35	35	-
	76 x 100	-	55	-	-	-	-	-
	100 x 108.25	60	50	40	30	25	20	-

Items listed above are common stock items, but not guaranteed to be in stock - Contact your Customer Service Representative to confirm stock availability

Standard Sizes

Lengths: 96", 97", 100", 108.25" (Gauges: 0.080" - 0.315")
 Widths: 48", 49", 51", 54", 60", 72", 76", 100"
 (Gauges: 0.080" - 0.315")

Custom: Minimum Width 30", Maximum Length 240"

Tolerances

Width & Length, Standard: -0.118" (Min) - +0.118" (Max)

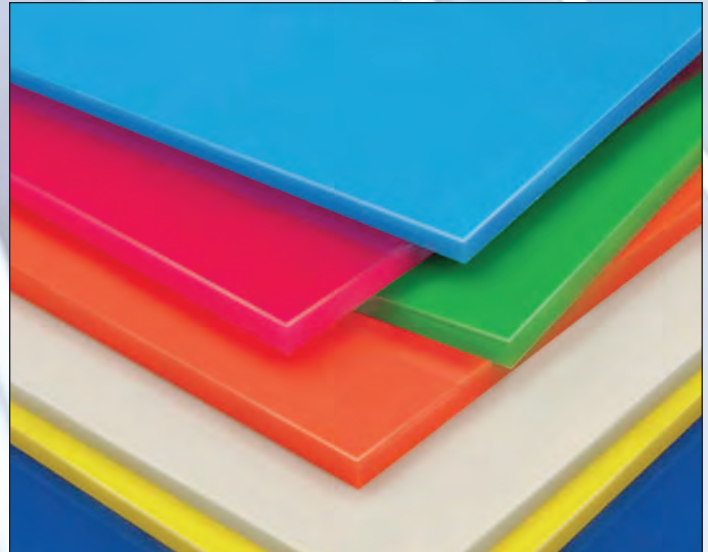
Colors, Standard

NC010 - Clear (Gauges: All)

CONTINUOUS CAST ACRYLIC COLORS

Our continuous cast colored acrylic sheet products are high in molecular weight that combine beautiful color options with outstanding performance qualities. As well as standard colors, we offer a color matching service to meet any design specification

- » Rich, long-lasting color
- » Exceptional UV stability
- » Superior craze resistance
- » Resists surface marks and scratching
- » Easy to shape, form and fabricate
- » Uniform thickness



Packaging

- » Weight per case: Varies per gauge
- » Weight per pallet: 2,000 lbs.

Masking

Standard Masking Configurations
F2 Masking Two (2) Sides Clear Polyfilm

Case Packaging

Gauge	0.118	0.177	0.220	0.236
48 x 96	80	55	45	40
49 x 97	80	-	-	-
51 x 100	80	50	-	35
54 x 100	70	50	-	-
60 x 96	75	50	45	45
72 x 96	65	45	35	35
76 x 100	55	45	-	-
100 x 108.25	40	30	25	20
100 x 126	-	-	-	15
100 x 150	-	-	-	14

Items listed above are common stock items, but not guaranteed to be in stock - Contact your Customer Service Representative to confirm stock availability

Standard Sizes

Lengths: 96", 97", 100", 108.25", 126", 150"

(Gauges: 0.118" - 0.236")

Widths: 48", 49", 51", 54", 60", 72", 76", 100"

(Gauges: 0.118" - 0.236")

Custom: Minimum Width 30", Maximum Length 240"

Tolerances

Width & Length, Standard: -0.118" (Min) - +0.118" (Max)

Colors, Standard

NC010 Clear (Gauges: All)

White 2447, 2448, 3015, 7328

Bronze 2412

Black 2025, 2026

Cascade Blue 7T5D

BLACK/WHITE ACRYLIC SHEET

This unique formulation has a beautiful gloss finish and eliminates the need for vinyl to create an eye-catching look. This material transforms from white to black depending on the lighting as well as time of day. It is suitable for indoor or outdoor designs. OPTIX L Black/White is an innovative product that appears black during the day and illuminates white, red, green, blue or other colors at night depending on the color of LEDs used.

This sheet provides two looks with only one product when backlit.

APPLICATIONS INCLUDE:

Same-sign night or day applications, displays, lighting fixtures



Packaging

- » Weight per case: Varies per gauge
- » Weight per pallet: 2,000 lbs.

Masking

Standard Masking Configurations
X2 TufGuard Masking Two (2) Sides

Case Packaging	
Gauge	0.177
Sheet Size 54 x 100	55

Items listed here are common stock items, but not guaranteed to be in stock - Contact your Customer Service Representative to confirm stock availability

Standard Sizes

Lengths: 100" (Gauges: 0.177")
Widths: 54" (Gauges: 0.177")

Custom: Minimum Width 30", Maximum Length 240"

Tolerances

Width & Length, Standard: -0.118" (Min) - +0.118" (Max)

Colors, Standard

BW2028

FROST INFUSED ACRYLIC SHEET

OPTIX L Myst is a continuous cast acrylic sheet. This sheet has a chic frosted look that softly diffuses light and add subtle elegance. The frost effect is permanently infused throughout the sheet, which means it is retained through any processing and fabrication technique. OPTIX L Myst works with many light sources. Available in 0.118" and 0.236", it is easy to fabricate, line bend and has an excellent edge finish.

APPLICATIONS INCLUDE:

Advertising display, corporate identity, exhibitions and tradeshow displays, interior design, partitions, Point-of-purchase display, store fixtures and solid surfaces



Packaging

- » Weight per case: Varies per gauge
- » Weight per pallet: 2,000 lbs.

Case Packaging

Gauge	0.118	0.177
Sheet Size 108 x 108.25	35	25

Masking

- Standard Masking Configurations
F2 Clear Polyfilm Masking Two (2) Sides

**Items listed here are common stock items,
but not guaranteed to be in stock -
Contact your Customer Service
Representative to confirm stock availability**

Standard Sizes

Lengths: 108.25" (Gauges: 0.118" - 0.177")
Widths: 108" (Gauges: 0.118" - 0.177")

Custom: Minimum Width 30", Maximum Length 240"

Tolerances

Width & Length, Standard: -0.118" (Min) - +0.118" (Max)

Colors, Standard

White 2449 (Gauges: All)

FRAME GRADE ACRYLIC SHEET

OPTIX L Frame Grade continuous cast sheet has 100% guarantee of no black speck contamination. This acrylic sheet has the highest clarity. It is easy to fabricate and fit to framing requirements in many applications and it can be used either for interior or exterior applications. OPTIX L Frame Grade is easy to clean and offers superior craze and chemical resistance. It is available in thicknesses from 0.090" - 0.220" and in a wide range of sheet sizes. Cut sizes and additional information available on request.

APPLICATIONS INCLUDE:

Framing solutions for homes, museums, public buildings and private showcases



Packaging

- » Weight per case: Varies per gauge
- » Weight per pallet: 2,000 lbs.

Masking

Standard Masking Configurations

- PF Masking Two (2) Sides White top, clear bottom film
- XP White TufGuard with red print top and bottom

Case Packaging

Gauge	0.090	0.098	0.118	0.177	0.220
48 x 96	120	100	80	-	45
49 x 97	-	-	-	-	-
51 x 100	110	100	75	-	35
54 x 100	-	-	-	-	-
60 x 96	-	-	-	-	-
72 x 96	75	75	65	45	35

Items listed above are common stock items, but not guaranteed to be in stock - Contact your Customer Service Representative to confirm stock availability

Standard Sizes

Lengths: 96", 97", 100" (Gauges: 0.090" - 0.220")
 Widths: 48", 49", 51", 54", 60", 72" (Gauges: 0.090" - 0.220")

Custom: Minimum Width 30", Maximum Length 240"

Tolerances

Width & Length, Standard: 0.118" (Min) - +0.118" (Max)

Colors, Standard

Clear (Gauges: All)

MUSEUM GRADE ACRYLIC SHEET

OPTIX L Museum Grade continuous cast acrylic sheet provides maximum protection and filters out 98% of damaging UV light. This acrylic sheet meets the demanding museum standards for display cases, with 100% guarantee of no black specks, and superior optical clarity. With uniform thickness OPTIX L Museum Grade is lighter weight and many times more resistant than glass. It is easy to fabricate and fit to all display case requirements and it can be used either for interior or exterior applications. OPTIX L Museum Grade is easy to clean and offers superior craze and chemical resistance. It is available in thicknesses from 0.098" - 0.236" and in a wide range of sheet sizes.

APPLICATIONS INCLUDE:

Exhibit Display Cases



Packaging

- » Weight per case: Varies per gauge
- » Weight per pallet: 2,000 lbs.

Masking

Standard Masking Configurations

- MP Masking Two (2) Sides White TufGuard with black print top and bottom
- X2 TufGuard Two (2) Sides

Case Packaging

Gauge		0.098	0.118	0.177	0.236
Sheet Size	48 x 96	100	80	55	40
	51 x 100	100	75	50	35
	72 x 96	-	65	45	-

Items listed here are common stock items, but not guaranteed to be in stock - Contact your Customer Service Representative to confirm stock availability

Standard Sizes

Lengths: 96", 100" (Gauges: 0.098" - 0.236")
 Widths: 48", 51", 72" (Gauges: 0.098" - 0.236")

Custom: Minimum Width 30", Maximum Length 240"

Tolerances

Width & Length, Standard: -0.118" (Min) - +0.118" (Max)

Colors, Standard

Clear (Gauges: All)

EDGE LIT ACRYLIC SHEET

OPTIX L Edge Lit continuous cast acrylic sheet is manufactured using an exclusive light diffusion technology. When this sheet is combined with reflective tape and white backing, its lighting capabilities become optimally enhanced. LED, fluorescent or neon light sources may be used to create stunning displays or fixtures. OPTIX L-EL allows users to create ADA compliant signage for interior and exterior applications. The better the light source, the better the panel will illuminate. OPTIX L-EL is available in 0.118", 0.157", 0.236" and 0.315" thicknesses.

APPLICATIONS INCLUDE:

Blade signs, framed signage, ADA compliant signs, displays, lighting fixtures and wayfinding



Packaging

- » Weight per case: Varies per gauge
- » Weight per pallet: 2,000 lbs.

Masking

Standard Masking Configurations

- F2 Clear Polyfilm Masking Two (2) Sides
- B2 Blue Masking Two (2) Sides

Case Packaging					
Gauge	0.118	0.157	0.236	0.315	
54 x 100	80	60	40	30	
Sheet Size 108 x 108.25	35	25	-	-	

Items listed here are common stock items, but not guaranteed to be in stock - Contact your Customer Service Representative to confirm stock availability

Standard Sizes

Lengths: 100", 108.25" (Gauges: 0.118" - 0.315")
 Widths: 54", 108" (Gauges: 0.118" - 0.315")

Custom: Minimum Width 30", Maximum Length 240"

Tolerances

Width & Length, Standard: -0.118" (Min) - +0.118" (Max)

Colors, Standard

Clear (Gauges: All)

IR REFLECTIVE ACRYLIC SHEET

OPTIX L Ecoshade continuous cast sheet reflects more than 75% of infrared radiation present in sunlight. This IR reflective sheet reduces heat transmitted through windows and skylights in the summer and decreases heat loss in the winter. OPTIX L Ecoshade is a translucent sheet that changes from iridescent blue to gold when viewed at different angles.

OPTIX L Ecoshade is available in 0.118" - 0.177" and can be used either for interior or exterior applications. Maximum length and width is 108"x 108.25".

APPLICATIONS INCLUDE:

Skylights, windows, doors and partitions



Packaging

- » Weight per case: Varies per gauge
- » Weight per pallet: 2,000 lbs.

Masking

Standard Masking Configurations
F2 Clear Polyfilm Masking Two (2) Sides

Case Packaging

Gauge	0.118	0.177
Sheet Size 108 x 108.25	35	25

Items listed here are common stock items, but not guaranteed to be in stock - Contact your Customer Service Representative to confirm stock availability

Standard Sizes

Lengths: 108.25" (Gauges: 0.118" - 0.177")
Widths: 108" (Gauges: 0.118" - 0.177")

Custom: Minimum Width 30", Maximum Length 240"

Tolerances

Width & Length, Standard: -0.118" (Min) - +0.118" (Max)

Colors, Standard

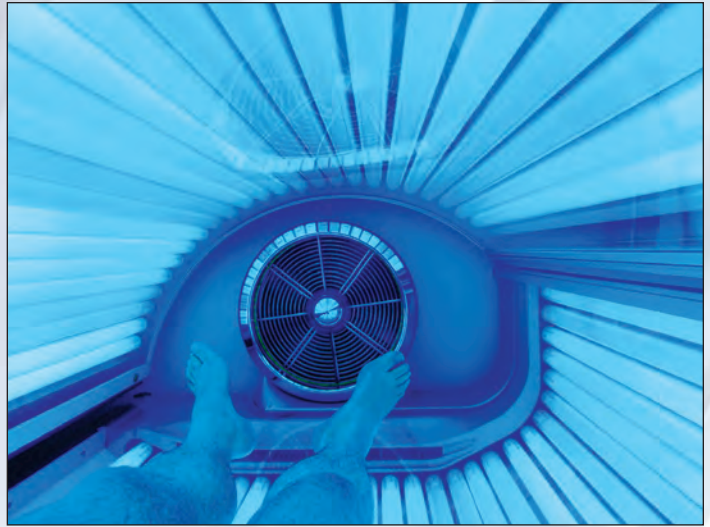
ECO001 Iridescent White (Gauges: All)

UV LIGHT TRANSMITTING ACRYLIC SHEET

Optix L UTRAN is a continuous cast acrylic sheet that transmits UV light down to 280nm and can be formed into shapes. The high gloss surface is easy to clean and keep sterile. OPTIX L UTRAN also is half the weight of, and more impact resistant than glass.

APPLICATIONS INCLUDE:

Indoor tanning beds, animal habitats, greenhouses



Packaging

- » Weight per case: Varies per gauge
- » Weight per pallet: 2,000 lbs.

Masking

Standard Masking Configurations
B2 Blue Masking Two (2) Sides

Case Packaging

Gauge	0.090	0.100	0.126	0.170	0.236
Sheet Size 88 x 108.25	50	50	45	30	25

Items listed here are common stock items, but not guaranteed to be in stock - Contact your Customer Service Representative to confirm stock availability

Standard Sizes

Lengths: 108.25" (Gauges: 0.090" - 0.236")
Widths: 88" (Gauges: 0.090" - 0.236")

Custom: Minimum Width 30", Maximum Length 240"

Tolerances

Width & Length, Standard: -0.118" (Min) - +0.118" (Max)

Colors, Standard

Clear (Gauges: All)

OPTIX L BLOCK ACRYLIC SHEET

OPTIX L Block is cell cast acrylic ideal for chunky, ultra bright 3D characters and features optimized light transmission properties that maximize the economic and environmental benefits of LED technology. It is easy to fabricate and can be used with white or colored LEDs, to create exciting visual communications. OPTIX L Block offers guaranteed indoor and outdoor performance ideal for specialized, custom-designed installations.

APPLICATIONS INCLUDE:

POP displays, indoor / outdoor signage and channel letters



Packaging

- » Weight per case: Varies per gauge
- » Weight per pallet: 2,000 lbs.

Masking

Standard Masking Configurations

MS-STP Clear Polyfilm Masking Two (2) Sides

Case Packaging

Gauge	1.180
Sheet Size 80 x 120	5

Items listed here are common stock items, but not guaranteed to be in stock - Contact your Customer Service Representative to confirm stock availability

Standard Sizes

Lengths: 120" (Gauge: 1.180")
Widths: 80" (Gauge: 1.180")

Tolerances

Width & Length, Standard: -0.118" (Min) - +0.118" (Max)

Colors, Standard

OPAL 1T77

FROSTED ACRYLIC SHEET

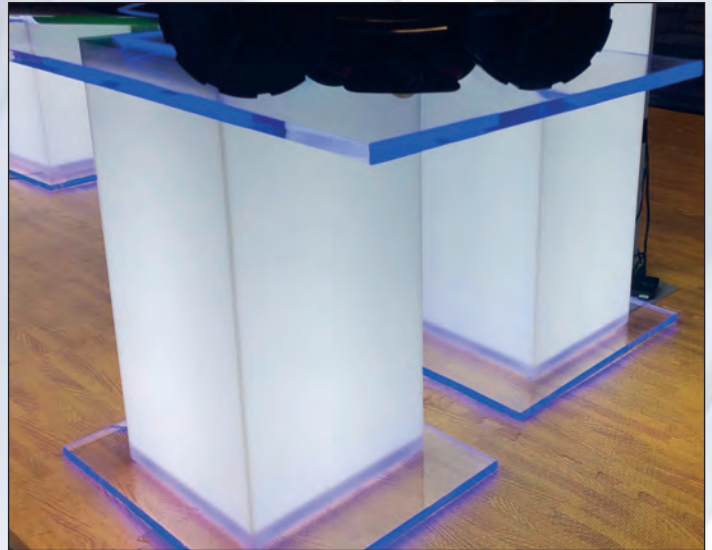
Optix L Frost cell cast acrylic is a cool, frosted surface in an exceptionally wide range of colors, making this translucent product suitable for a host of applications. Contemporary, dramatic, cool or cutting edge, Optix L Frost is one of the most versatile product offerings in our portfolio.

Optix L Frost cell cast product combines high performance characteristics and beautiful aesthetics that will set your imagination free!

- » Cool frosted surface
- » Modern contemporary appeal
- » Resists surface marks and scratching
- » Easy to shape, form and fabricate
- » Retains frosted texture through thermoforming

APPLICATIONS INCLUDE:

Lighting, signs, POP display



**Non-stock item -
Contact your Customer Service
Representative for a quote**

PLASKOLITE

A GLOBAL LEADER IN THE PRODUCTION OF THERMOPLASTIC SHEET

FOUNDED IN 1950

Our Mission: to deliver superior thermoplastic sheet, coatings and polymers to the world, through long-lasting customer relationships and hands-on customer service.

MANUFACTURING LOCATIONS



From our founding, PLASKOLITE strives to treat our employees, our customers, our community and the world, with kindness, dignity and respect. This drives our continuing effort to create sustainable products, in a sustainable manner, for future generations. This on-going commitment is expressed in the

PLASKOLITE Sustainable Ecosystem:

QUICK FACTS

STATUS: Privately held

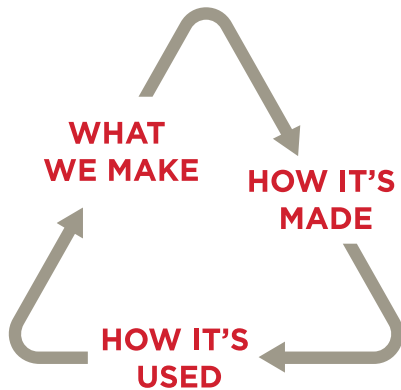
GLOBAL HEADQUARTERS: Columbus, OH

EMPLOYEES: 1900 Worldwide

MARKETS SERVED: Signage, Lighting, Retail Display, Construction, Transportation, Security, Bat & Spa, Industrial, Architecture, Green Houses

OUR PILLARS OF SUSTAINABILITY

EACH CONTRIBUTES TO MAKING THE WORLD A BETTER PLACE



WHAT WE MAKE

Versatile, high-quality, durable thermoplastic materials...not single-use plastics

HOW IT'S MADE

How we make our products reflects our overall philosophy of continuous environmental improvement

HOW IT'S USED

Our thermoplastics play an important role in advancing human well-being, energy conservation and quality of life

These suggestions and data are based on information we believe to be reliable. They are offered in good faith, but without guarantee, as conditions and methods of use are beyond our control. We recommend that the prospective user determines the suitability of our materials and suggestions before adopting them on a commercial scale.